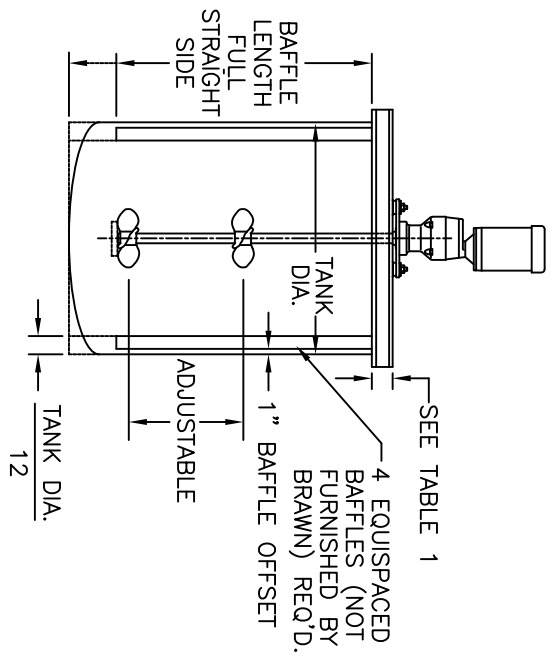
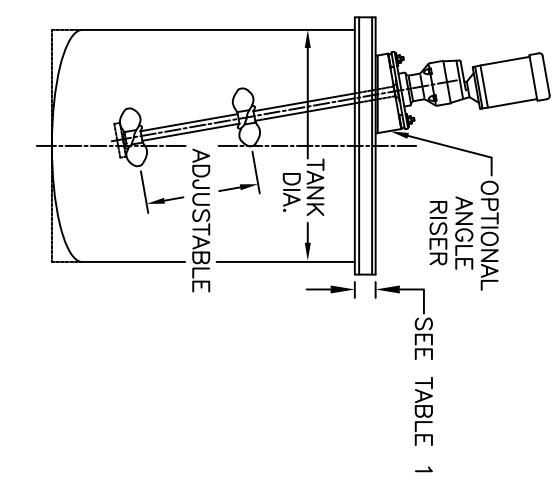


MIXER MODEL BDF/BGMF	DESIGN LOADS			RECOMMENDED CHANNEL SIZE
	DOWNWARD LOAD (LBS.)	BENDING (IN. LBS.)	TORSIONAL (IN. LBS.)	BEAM SPAN UP TO AND INCL.
33	230	4,300	150	96"
50	245	4,300	200	
75	260	4,300	300	C4 x 7.25#
100	275	4,300	400	
150	360	7,500	600	
200	380	7,500	800	
300	400	8,700	1,200	C6 x 8.2#
500	420	8,700	2,000	

TABLE 1



ANGULAR OFF-SET MOUNTING (SEE TABLE 2 FOR DIMENSIONS)



TANK DIA.	"X"	"Y"
30"	9"	5"
33"	10"	5.5"
36"	11"	6"
39"	11.5"	6.5"
42"	13.5"	7"
45"	14.5"	7.5"
48"	15.5"	8.75"
51"	17"	9.5"
54"	18"	10"
57"	19"	10.5"
60"	20"	11"
63"	21.5"	12"
66"	22.5"	12.5"
69"	23.5"	13"
72"	25"	14"
75"	26"	14.75"
78"	27"	15.5"

TANK DIA.	"X"	"Y"
81"	28.5"	16.5"
84"	29.5"	17"
90"	31.5"	18"
93"	32.5"	18.5"
96"	34"	19.5"
99"	35"	20"
102"	36"	20.5"
105"	37"	21"
108"	38.5"	22"
111"	39.5"	22.5"
114"	40.5"	23"
117"	42"	24"
120"	43"	24.5"
126"	45.5"	26"
132"	47.5"	27"
138"	50"	28.5"
144"	52"	30"

TABLE 2

- NOTES:
1. WARRANTY APPLIES ONLY TO ITEMS FURNISHED BY BRAUN MIXER, INC. ALL OTHER EQUIPMENT AND DESIGNS ARE THE RESPONSIBILITY OF OTHERS. BRAUN MIXER, INC. DOES NOT WARRANT, GUARANTEE, OR ASSUME ANY RESPONSIBILITY FOR THE DESIGN OR CONSTRUCTION OF THE MOUNTING THE MIXER.
 2. DESIGN LOADS ARE GREATER THAN ACTUAL LOADS BY A SUITABLE FACTOR TO PROVIDE FOR ADEQUATE DESIGN OF MIXER MOUNTING STRUCTURE.
 3. ROUND TANKS REQUIRE BAFFLES AS SHOWN UNLESS OTHERWISE INSTRUCTED BY BRAUN MIXER, INC.

ALL EQUIPMENT DESIGN AND APPLICATION DATA SHOWN HEREIN IS CONFIDENTIAL AND THE PROPERTY OF BRAUN MIXER, INC. NO USE OR DISCLOSURE THEREOF MAY BE MADE WITHOUT OUR WRITTEN PERMISSION.

FILE NO. SDB103C DATE 6-3-98 ©2018

BRAUN MIXER
MIXER MODEL
BDF & BGMF MOUNTING
DIMENSION AND ASSEMBLY DRAWING