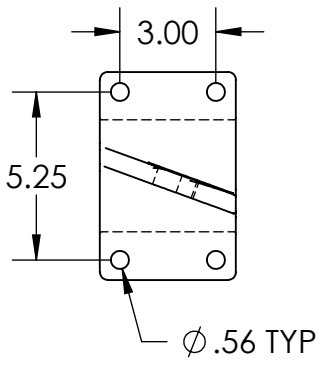
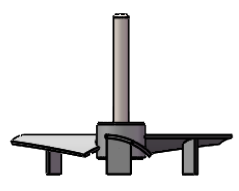


AIR MOTOR OPTION
INCLUDES NEEDLE
VALVE AND MUFFLER
3/8" NPT
(23 CFM @ 40 PSI
AIR REQUIRED)



OPTIONAL ADJUSTABLE
BEAM MOUNT



OPTIONAL AF3
IMPELLER

NOTES:

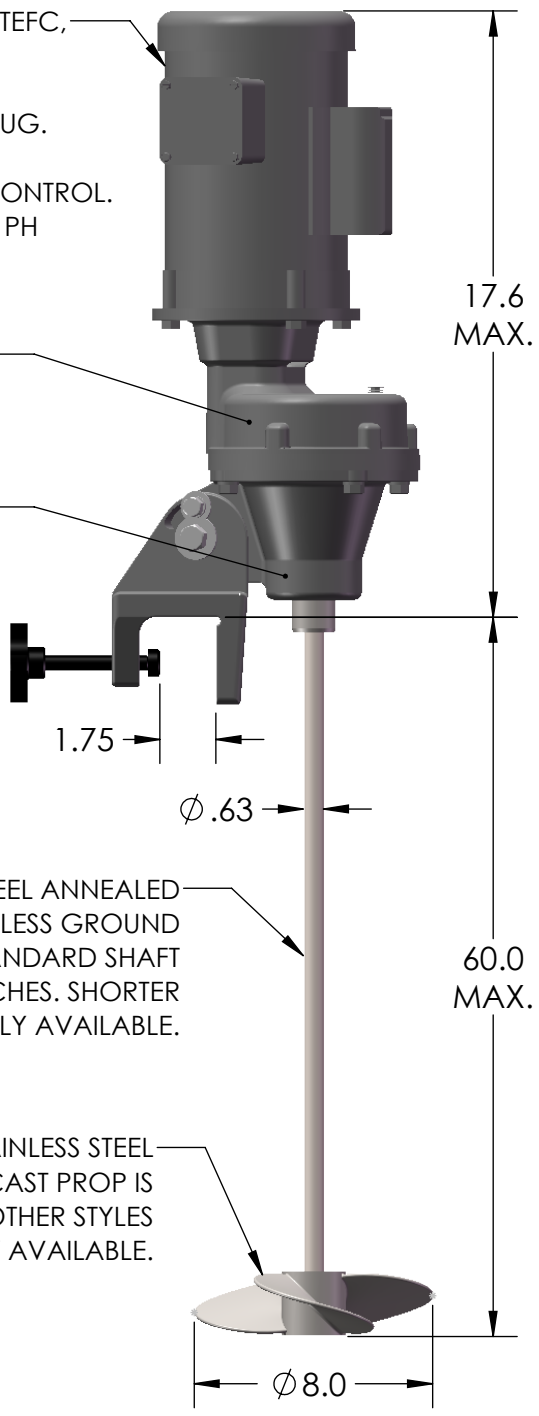
1. CLAMP AND ADJUSTABLE BEAM MOUNT PROVIDE 20° ANGULAR OFF CENTER MOUNTING AND 0 TO 60° VERTICAL ADJUSTMENT.
2. ALL DIMENSIONS IN INCHES
3. APPROX. WGT: 38 LBS.

STANDARD MOTOR IS 1/3 HP TEFC,
115V, 1PH, 60 HZ.
MOTOR OPTIONS INCLUDE:

- SWITCH, CORD AND PLUG.
- 3PH TEFC
- DC WITH 115V SPEED CONTROL.
- 1/4 HP TEFC, 115VAC, 1PH
- AIR

SINGLE REDUCTION
HELICAL GEARING
FOR QUIET OPERATION

PERMANENTLY LUBRICATED
BALL BEARING CHUCK
SHAFT SUPPORT FOR
EXTRA LOAD CAPACITY



316 STAINLESS STEEL ANNEALED
AND CENTERLESS GROUND
SHAFT. STANDARD SHAFT
LENGTH IS 60 INCHES. SHORTER
SHAFTS OPTIONALLY AVAILABLE.

316 STAINLESS STEEL
INVESTMENT CAST PROP IS
STANDARD. OTHER STYLES
OPTIONALLY AVAILABLE.

FOR REFERENCE ONLY

* ALL DIMENSIONS AND WEIGHTS ARE FOR REFERENCE ONLY UNLESS THE DRAWING IS CERTIFIED.		
* ALL EQUIPMENT DESIGN AND APPLICATION DATA SHOWN HEREIN IS CONFIDENTIAL AND THE PROPERTY OF BRAWN MIXER. NO USE OR DISCLOSURE THEREOF MAY BE MADE WITHOUT OUR WRITTEN PERMISSION.		
DRAWN BY: BSB	DATE: 9/4/2018	© 2018
APPROVED BY:	DATE:	

12838 Stainless Drive
Holland, MI 49424
PH: 616-399-5600
FAX: 616-399-3084

MIXER MODEL SG25/33	
DIMENSION AND ASSEMBLY DRAWING	
DWG. NO. A- TK0007	REV.