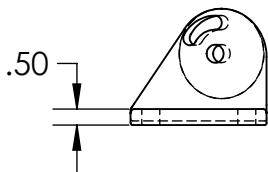
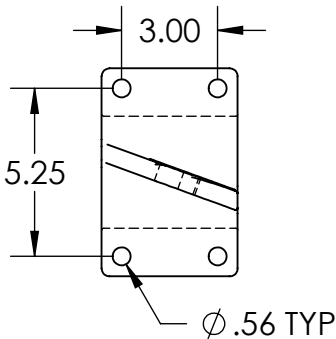


AIR MOTOR OPTION
INCLUDES NEEDLE
VALVE AND MUFFLER
3/8" NPT
(23 CFM @ 40 PSI
AIR REQUIRED)

STANDARD MOTOR IS 1/3 HP TEFC,
115V, 1PH, 60 HZ.

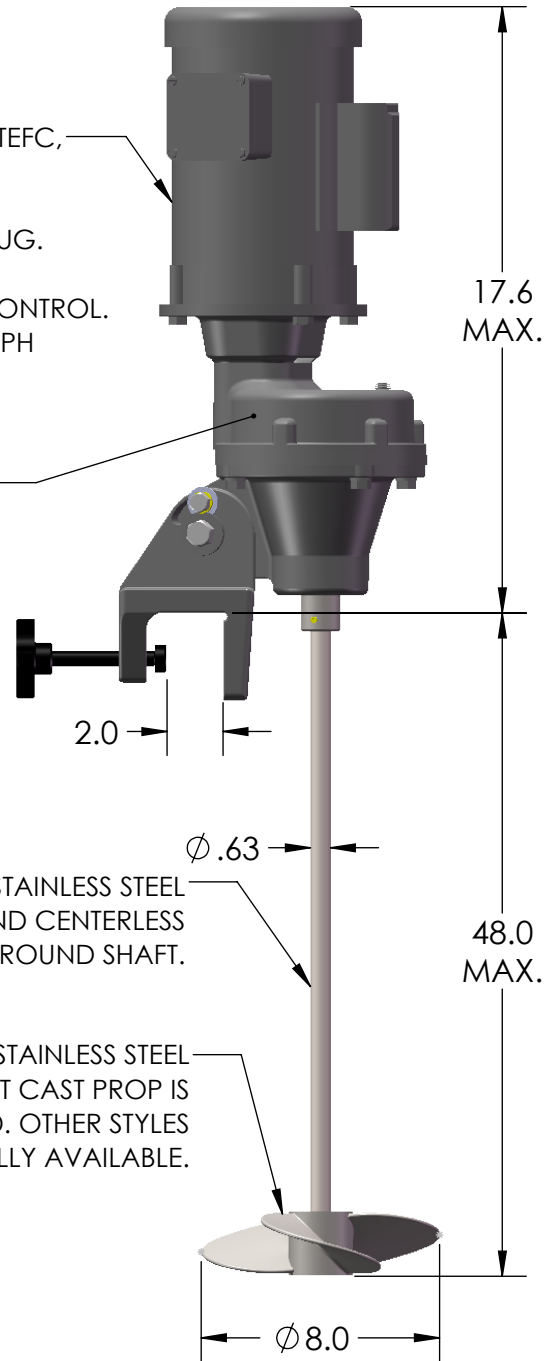
MOTOR OPTIONS INCLUDE:

- SWITCH, CORD AND PLUG.
- 3PH TEFC
- DC WITH 115V SPEED CONTROL.
- 1/4 HP TEFC, 115VAC, 1PH
- AIR



OPTIONAL ADJUSTABLE
BEAM MOUNT

SINGLE REDUCTION
HELICAL GEARING
FOR QUIET OPERATION



316 STAINLESS STEEL
ANNEALED AND CENTERLESS
GROUND SHAFT.

316 STAINLESS STEEL
INVESTMENT CAST PROP IS
STANDARD. OTHER STYLES
OPTIONALLY AVAILABLE.

NOTES:

1. CLAMP AND ADJUSTABLE BEAM MOUNT PROVIDE 20° ANGULAR OFF CENTER MOUNTING AND 0 TO 60° VERTICAL ADJUSTMENT.
2. ALL DIMENSIONS IN INCHES
3. APPROX. WGT: 38 LBS.

FOR REFERENCE ONLY

* ALL DIMENSIONS AND WEIGHTS ARE FOR REFERENCE ONLY UNLESS THE DRAWING IS CERTIFIED.

* ALL EQUIPMENT DESIGN AND APPLICATION DATA SHOWN HEREIN IS CONFIDENTIAL AND THE PROPERTY OF BRAWN MIXER. NO USE OR DISCLOSURE THEREOF MAY BE MADE WITHOUT OUR WRITTEN PERMISSION.



12838 Stainless Drive
Holland, MI 49424

PH: 616-399-5600
FAX: 616-399-3084

MIXER MODEL
LG25/33

DIMENSION AND ASSEMBLY DRAWING

DRAWN BY: BSB DATE: 9/4/2018 © 2018

APPROVED BY: DATE:

DWG. NO. **A- TK0004** REV.