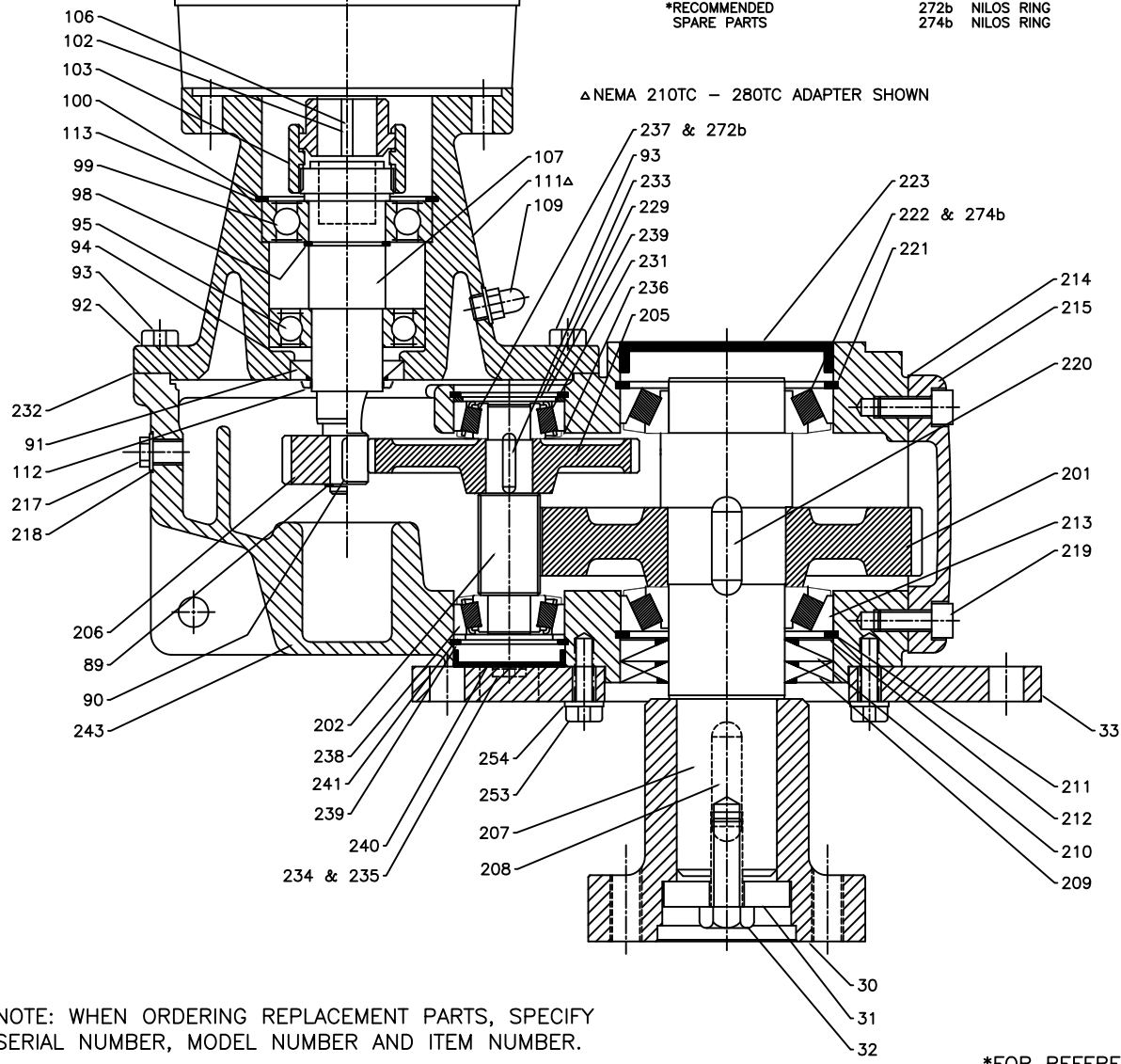


- 30 SHAFT COUPLING
- 31 THRUST WASHER
- 32 HEX HEAD BOLT
- 33 MOUNTING PLATE
- 201 LOW SPEED GEAR
- 202 LOW SPEED PINION
- 205 HIGH SPEED GEAR
- 206 HIGH SPEED PINION
- 207 OUTPUT SHAFT
- 208 KEY
- 89 SNAP RING
- 90 KEY
- 91 OIL SEAL
- 92 WASHER
- 93 HEXAGON SCREW
- 94 SNAP RING
- (APPLIES TO NEMA FRAMES 56C - 180TC ONLY)
- 95 INPUT SHAFT BEARING
- 98 SNAP RING
- 99 INPUT SHAFT BEARING
- *999 100 SNAP RING
- 102 KEY
- 103 COUPLING
- 106 SET SCREW
- 107 INPUT SHAFT
- 109 BREATHER VENT
- 111 NEMA ADAPTER
- 112 OIL SLINGER
- 113 SHIM
- *209 OIL SEAL
- *210 OIL SEAL
- *211 SNAP RING
- *212 SHIM KIT
- *213 OUTPUT SHAFT BEARING (LOWER)
- *214 GASKET
- 215 GEAR CASE COVER
- 217 VENT PLUG
- *218 GASKET
- 219 SOCKET HEAD SCREW
- 220 KEY
- *221 SNAP RING
- *222 OUTPUT SHAFT BEARING (UPPER)
- *223 SEAL PLUG
- 229 SPACER (TAPERED ROLLER BEARING)
- *231 SNAP RING
- *232 GASKET
- 233 KEY
- 234 DRAIN PLUG
- *235 GASKET
- 236 SPACER (BALL BEARING)
- *237 PINION SHAFT BEARING
- *238 PINION SHAFT BEARING
- *239 SNAP RING
- *240 SEAL PLUG
- *241 SHIM KIT
- 243 HOUSING
- 253 HEX HEAD BOLT
- 254 LOCK WASHER
- 272b NILOS RING
- 274b NILOS RING

*RECOMMENDED SPARE PARTS

*999 C-FACE INPUT KIT

△NEMA 210TC - 280TC ADAPTER SHOWN



NOTE: WHEN ORDERING REPLACEMENT PARTS, SPECIFY SERIAL NUMBER, MODEL NUMBER AND ITEM NUMBER.

FOR REFERENCE ONLY

* ALL DIMENSIONS AND WEIGHTS ARE FOR REFERENCE ONLY UNLESS THE DRAWING IS CERTIFIED.
 * ALL EQUIPMENT DESIGN AND APPLICATION DATA SHOWN HEREIN IS CONFIDENTIAL AND THE PROPERTY OF BRAUN MIXER. NO USE OR DISCLOSURE THEREOF MAY BE MADE WITHOUT OUR WRITTEN PERMISSION.

BRAUN MIXER
 AN INMEX COMPANY

12838 STAINLESS DRIVE
 HOLLAND, MI. 49424
 PH. 616-399-5600
 FAX 616-399-3084

MIXER MODEL
BTO CUT-AWAY
 2 SIZE THRU 9 DOUBLE REDUCTION
 DIMENSION AND ASSEMBLY DRAWING

DWG. NO. **A- TK0065** REV.

DRAWN BY: TJD	DATE: 5-19-97	© 2018
APPROVED BY:	DATE:	