



DATA CENTER COOLING

High-efficiency flow solutions for modern data demands



Stay cool, stay connected

Liquid-based cooling solutions:

KSB delivers high-efficiency pumping systems tailored for liquid-based data center cooling. Designed to lower operating costs, improve thermal performance, and enhance Power Usage Effectiveness (PUE), our pumps support a range of cooling methods, including:

- Immersion Cooling
- In-Row Cooling
- Direct-to-Chip Cooling
- CRAH Chilled Water
- Pumped Refrigerant



Etabloc

Single-stage volute casing pump

Max. Flow: 3,322 GPM

Max. Head: 524 Ft.

Materials: Cast Iron, Nodula
Cast Iron, 316SS, Bronze



Etachrom

Single-stage stainless steel pump

Max. Flow: 1,100 GPM

Max. Head: 344 Ft.

Materials: 316TiSS



Etaline

Close-coupled, single-stage volute casing pump

Max. Flow: 3,740 GPM

Max. Head: 459 Ft.

Materials: Cast Iron



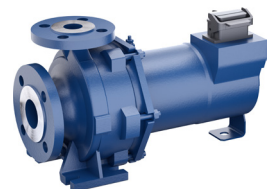
Etaseco

Horizontal or vertical sealless canned motor pump

Max. Flow: 1,100 GPM

Max. Head: 328 Ft.

Materials: Nodular Cast Iron,
316SS



Smarter cooling starts with KSB

Air-based cooling solutions:

KSB supports advanced air-based cooling strategies with pumps engineered for consistent, energy-efficient operation. Our solutions help optimize Water Usage Effectiveness (WUE) and integrate smoothly into air cooling system architectures such as:

- CRAC DX
- Self-Contained
- Direct Fresh Air Evaporative
- Indirect Air Evaporative
- Self-Contained Roof-top



Omega / RDLO

Axially split volute casing pump

Max. Flow: 79,260 GPM

Max. Head: 984 Ft.

Materials: Grey Cast Iron, Nodular Cast Iron, Duplex SS



Etaline-R

Vertical single-stage volute casing pump

Max. Flow: 8,360 GPM

Max. Head: 318 Ft.

Materials: Nodular Cast Iron



B Pump

Vertical turbine pump

Max. Flow: 11,448 GPM

Max. Head: 525 Ft.

Materials: Cast Iron, 316SS, Duplex SS, Super Duplex SS, Bronz



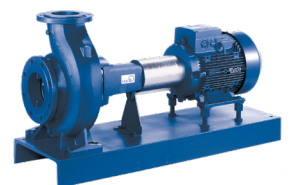
Etanorm

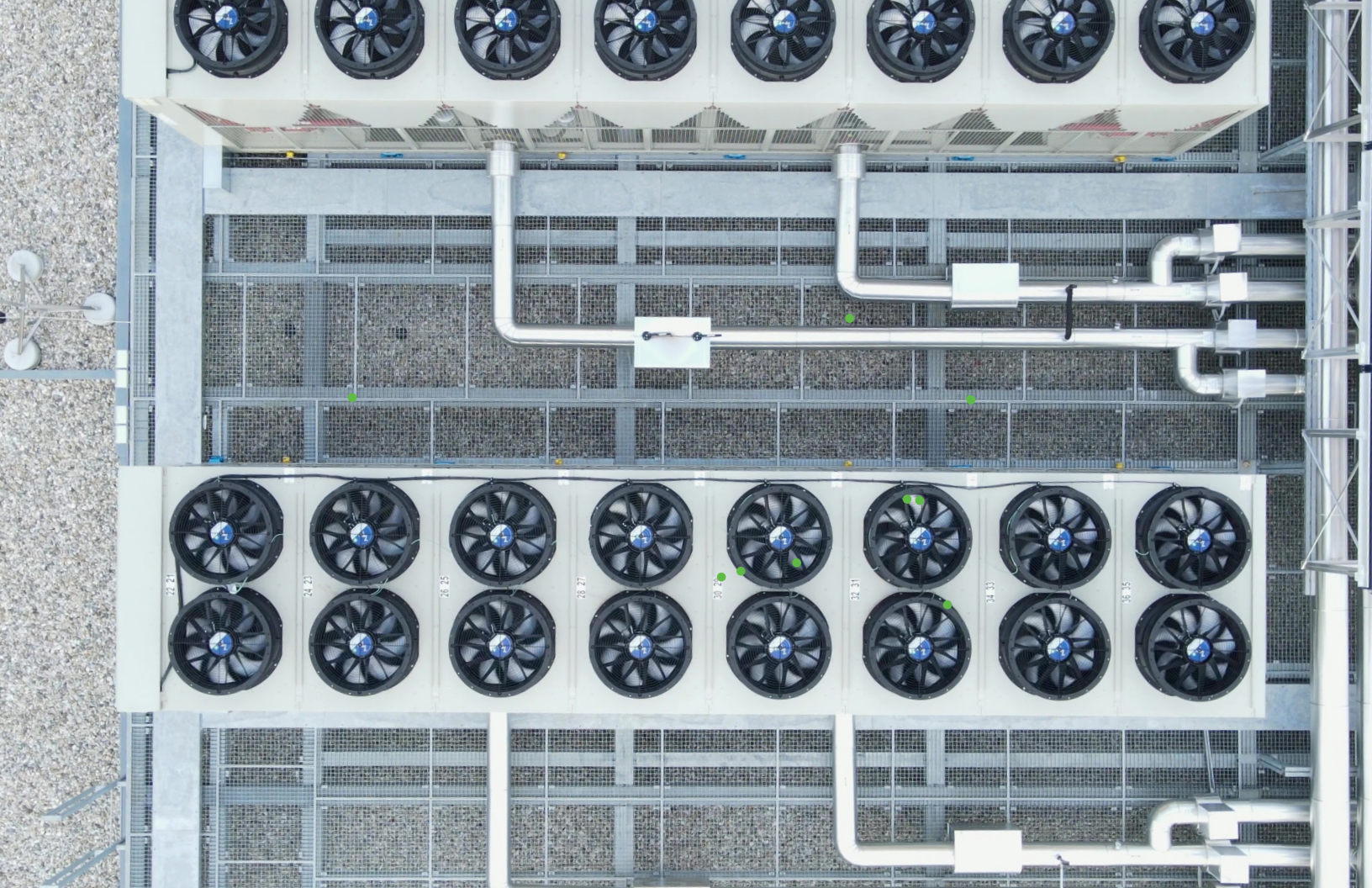
Single-stage volute casing pump

Max. Flow: 3,322 GPM

Max. Head: 524 Ft.

Materials: Cast Iron, Nodular Cast Iron, 316SS, Bronze





Established global excellence with a renewed U.S. focus



 **PUFFER** Rotating Equipment
Pumps & Parts • Pump Skids • Repairs & Services

12305 Kurland Dr, Houston, TX 77034
RotatingEquipment@puffer.com 281-240-2000



Authorized Sales Partner