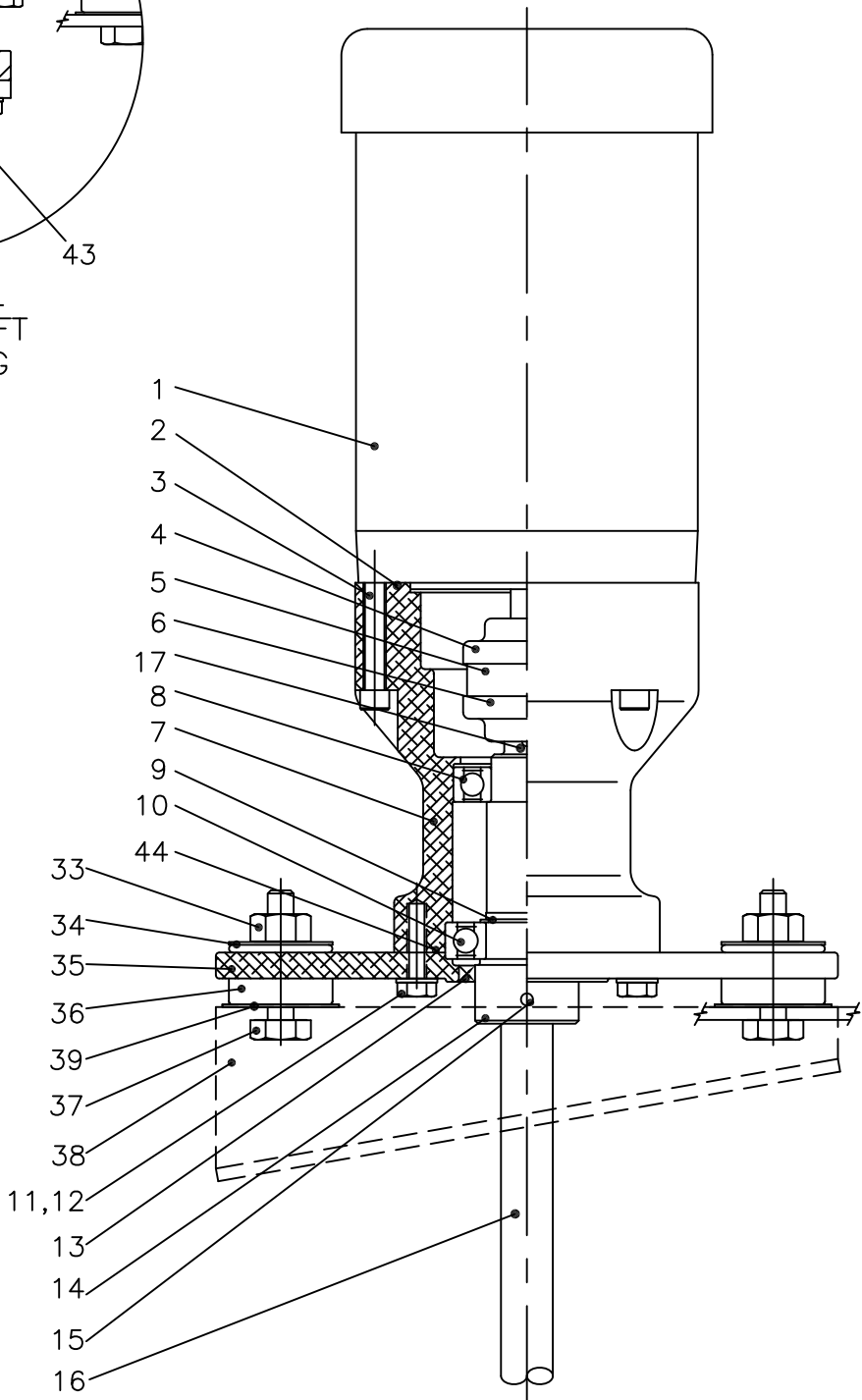


OPTIONAL
RIGID SHAFT
COUPLING

44	1	O-RING
43	1	HEX HEAD CAP SCREW (OPT.)
42	1	THRUST WASHER (OPTIONAL)
41	1	KEY (OPTIONAL)
40	1	DRIVE SHAFT (OPTIONAL)
39	4	HEAD WASHER
38	2	ANGLE RISER (OPTIONAL)
37	4	BOLT
36	4	ISOLATION MOUNT
35	1	MOUNTING PLATE
34	4	TAIL WASHER (OPTIONAL)
33	4	NUT
28	1	RIGID FLANGE SHAFT (OPT.)
27	4	LOCK WASHER
26	4	HEX HEAD CAP SCREW
25	1	RIGID FLANGE COUPLING (OPT.)
17	1	KEY
16	1	MIXER SHAFT
15	2	SET SCREW
14	1	CHUCK SHAFT
13	1	OIL SEAL
12	6	LOCK WASHER
11	6	HEX HEAD CAP SCREW
10	1	BALL BEARING
9	1	SNAP RING
8	1	BALL BEARING
7	1	HOUSING
6	1	COUPLING HUB
5	1	SLEEVE
4	1	COUPLING HUB
3	4	SOCKET HEAD CAP SCREW
2	1	O-RING
1	1	MOTOR



FOR REFERENCE ONLY

ITEM NO.	QTY.	PART NAME
----------	------	-----------

* ALL DIMENSIONS AND WEIGHTS ARE FOR REFERENCE ONLY UNLESS THE DRAWING IS CERTIFIED.
 * ALL EQUIPMENT DESIGN AND APPLICATION DATA SHOWN HEREIN IS CONFIDENTIAL AND THE PROPERTY OF BRAUN MIXER. NO USE OR DISCLOSURE THEREOF MAY BE MADE WITHOUT OUR WRITTEN PERMISSION.



12838 STAINLESS DRIVE
 HOLLAND, MI. 49424
 PH. 616-399-5600
 FAX 616-399-3084

MIXER MODEL
 BDF33 THRU 500
 DIRECT DRIVE
 DIMENSION AND ASSEMBLY DRAWING

DRAWN BY: BSB	DATE: 10-26-95	© 2018
APPROVED BY:	DATE:	

DWG. NO. A-	TK0032	REV.
-------------	--------	------