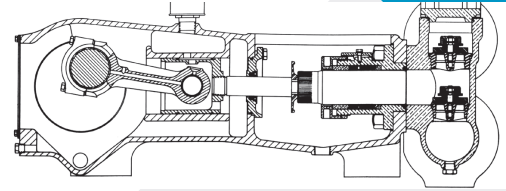


# MA-95L(M)

## TRIPLEX PLUNGER



No. of Plungers.....	3
Maximum Rated Speed.....	450 rpm
Stroke Length.....	4.00 in. 101.6 mm
Maximum Rated Power.....	95.0 hp 70.7 kW
Maximum Rod Load.....	6,259 lbs. 27.7 kN
Weight 95L.....	1,725 lbs.
95M.....	1,600 lbs.

**ENGLISH UNITS**
**MA-95L**

PLUNGER SIZE in.	STUFFING BOX BORE in.	MAX psi	*GALLON PER/REV.	250 rpm US GPM	300 rpm US GPM	350 rpm US GPM	400 rpm US GPM	450 rpm US GPM
3.500	4.500	650	0.4998	125.0	149.9	174.9	199.9	224.9
3.250	4.500	754	0.4310	107.8	129.3	150.9	172.4	194.0
3.000	4.000	884	0.3672	91.8	110.2	128.5	146.9	165.2
2.750	4.000	1053	0.3086	77.2	92.6	108.0	123.4	138.9
2.625	4.000	1156	0.2811	70.3	84.3	98.4	112.4	126.5
2.500	3.250	1274	0.2550	63.8	76.5	89.3	102.0	114.8
2.375	3.250	1411	0.2301	57.5	69.0	80.5	92.0	103.6
2.250	3.250	1572	0.2066	51.7	62.0	72.3	82.6	93.0
2.125	3.250	1764	0.1842	46.1	55.3	64.5	73.7	82.9

**METRIC UNITS**
**MA-95L**

PLUNGER SIZE mm	STUFFING BOX BORE mm	MAX PRESS. BAR	*LITER PER/REV.	250 rpm LPM	300 rpm LPM	350 rpm LPM	400 rpm LPM	450 rpm LPM
88.9	114.3	44.7	1.8922	473.1	567.7	662.3	756.9	851.5
82.6	114.3	51.9	1.6318	408.0	489.5	571.1	652.7	734.3
76.2	101.6	60.9	1.3902	347.6	417.1	486.6	556.1	625.6
69.9	101.6	72.6	1.1684	292.1	350.5	408.9	467.4	525.8
66.7	101.6	79.7	1.0642	266.1	319.3	372.5	425.7	478.9
63.5	82.6	88.2	0.9654	241.4	287.6	337.9	386.2	434.4
60.3	82.6	97.4	0.8712	217.8	261.4	304.9	348.5	392.0
57.2	82.6	108.4	0.7822	195.6	234.7	273.8	312.9	352.0
54.0	82.6	121.6	0.6974	174.4	209.2	244.1	279.0	313.8

**ENGLISH UNITS**
**MA-95M**

PLUNGER SIZE in.	STUFFING BOX BORE in.	MAX psi	*GALLON PER/REV.	250 rpm US GPM	300 rpm US GPM	350 rpm US GPM	400 rpm US GPM	450 rpm US GPM
2.250	3.250	1572	0.2066	51.7	62.0	72.3	82.6	92.9
2.125	3.250	1763	0.1842	46.0	55.3	64.5	73.7	82.9
2.000	2.875	1992	0.1632	40.8	49.0	57.1	65.3	73.4
1.875	2.875	2265	0.1434	35.9	43.0	50.2	57.4	65.5
1.750	2.875	2600	0.1250	31.3	37.5	43.8	50.0	56.3
1.625	2.500	3016	0.1077	26.9	32.3	37.7	43.1	48.5
1.500	2.500	3250	0.0918	23.0	27.5	32.1	36.7	41.3

**METRIC UNITS**
**MA-95M**

PLUNGER SIZE mm	STUFFING BOX BORE mm	MAX PRESS. BAR	*LITER PER/REV.	250 rpm LPM	300 rpm LPM	350 rpm LPM	400 rpm LPM	450 rpm LPM
57.2	82.6	108.4	0.7822	195.6	234.7	273.8	315.9	352.0
54.0	82.6	121.6	0.6974	174.4	209.2	244.1	279.0	313.8
50.8	73.0	137.2	0.6179	154.5	185.4	216.3	247.2	278.1
47.6	73.0	156.1	0.5429	135.7	163.0	190.0	217.2	244.3
44.5	73.0	179.2	0.4733	118.3	142.0	165.7	189.3	213.0
41.3	63.5	207.9	0.4078	102.0	122.3	142.7	163.1	183.5
38.1	63.5	224.0	0.3476	86.9	103.8	121.7	139.0	156.4

\*Displacement based on 100% Volumetric Efficiency

Power based on 90% Mechanical Efficiency

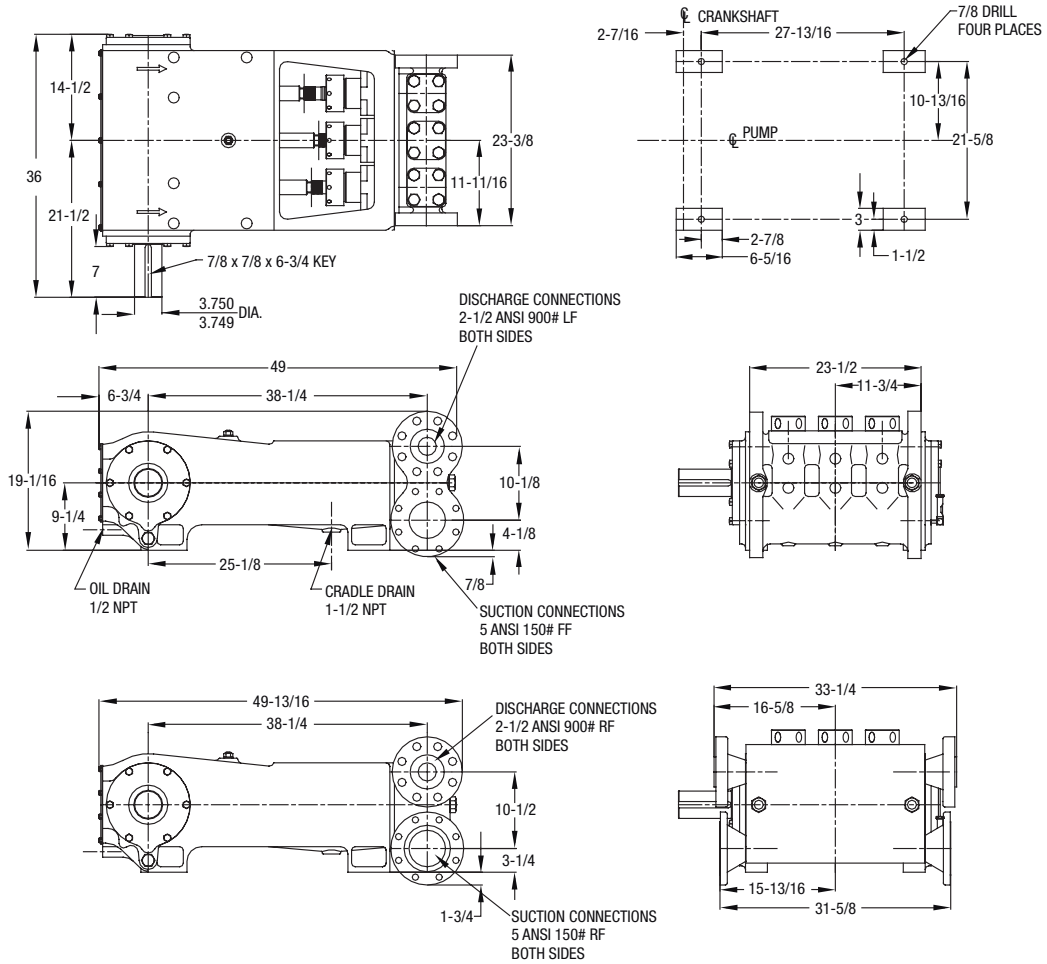
$$I_{hp} = \frac{USGPM \times (\text{Discharge psig} - 1/2 \text{ Suction psig})}{1542}$$

$$I_{kW} = \frac{M^3/HR \times (\text{Discharge Bar} - 1/2 \text{ Suction Bar})}{32.4}$$

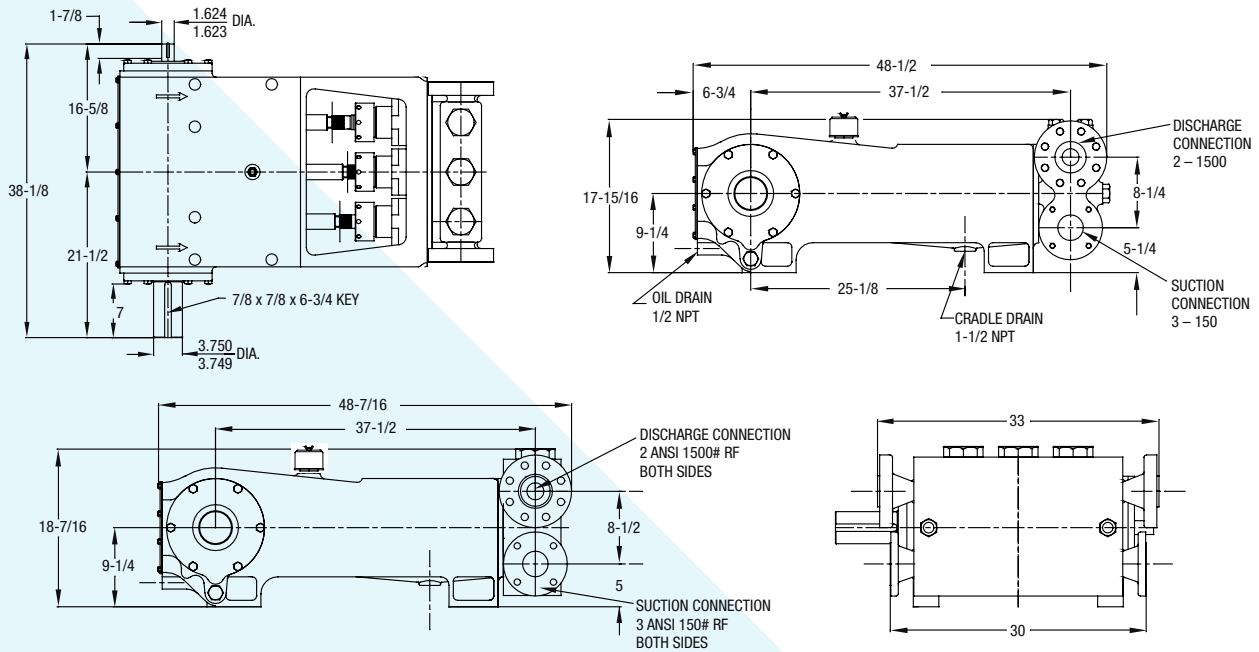
$$\text{Pump rpm} = \frac{USGPM \text{ Desired}}{USG \text{ per Revolution of Selected Plunger}}$$

$$\text{Pump rpm} = \frac{M^3/HR \text{ Desired}}{M^3 \text{ per Revolution of Selected Plunger}}$$

## MA-95L Triplex Pump (Measurements shown in inches)



## MA-95M Triplex Pump (Measurements shown in inches)



# ENGINEERING DATA

## MA-95L/MA-95M Triplex Pumps

### POWER END ENGINEERING DATA

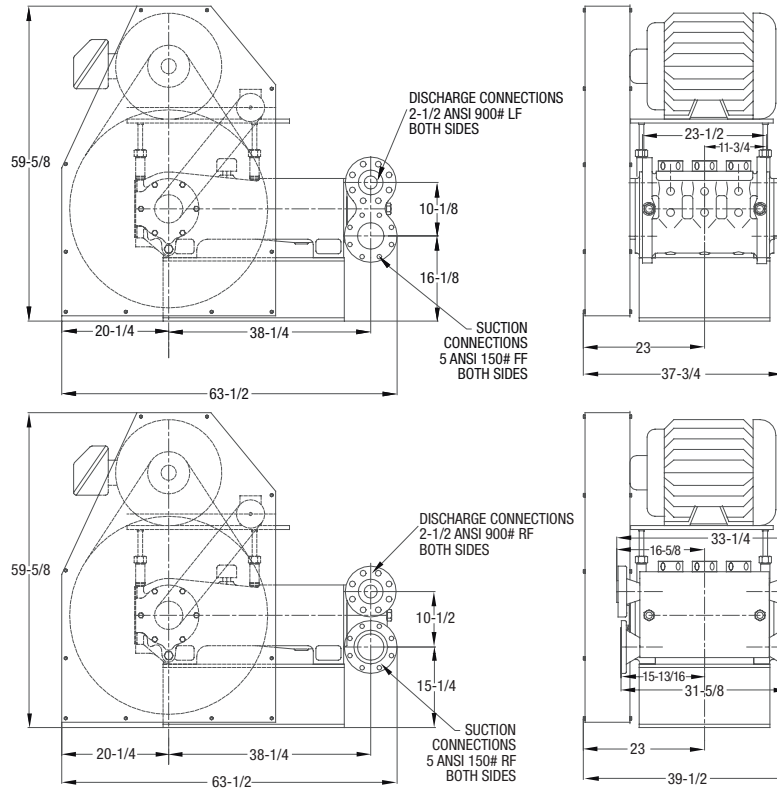
Max. Input hp @ Speed .....	95 @ 450 rpm
Rated Continuous Plunger Load .....	6,259 lbs.
Max. Rated Continuous Speed .....	450 rpm
Normal Continuous Speed Range .....	150 to 420 rpm
Minimum Speed .....	100 rpm
Oil Capacity .....	18 U.S. Qts
Power End Oiling System .....	Splash & Scoop
Power Frame, One-Piece .....	Cast Iron
Crosshead, Full Cylindrical .....	Cast Iron
Crosshead, Dia. x Length .....	5-3/4 x 6-3/16 in.
Crankshaft .....	Ductile Iron
Crankshaft Diameters:	
At Tapered Roller Bearings .....	4 in.
At Crankpin Bearings, Dia. x Length .....	4 x 3 in.
Crosshead (Wrist) Pin, Case-Hardened and Ground .....	AISI 8620
Main Bearings, Tapered Roller .....	Timken®
Crankpin Bearings, Precision Automotive .....	Steel Backed, Babbitt-Lined
Extension (Pony) Rod .....	17-4PH SST.
Connecting Rod, Automotive Type .....	Ductile Iron
Average Crosshead Speed @ 450 rpm .....	300 fpm
Minimum Life Expectancy, Main Bearings, L <sub>10</sub> .....	60,000+ hr.

### LIQUID END ENGINEERING DATA

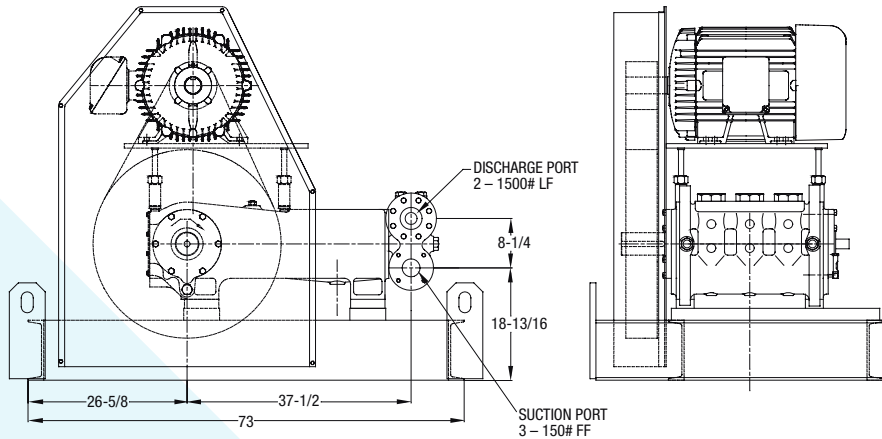
Max. Continuous Working Pressure 95L .....	1,764 psi
95M .....	3,250 psi
Hydrostatic Test 95L .....	2,646 psi
95M .....	4,875 psi
Available Liquid End Materials, A.S.T.M.	
Nickel Aluminum Bronze Casting .....	B148-C955
Carbon Steel Block .....	Various Grades
Stainless Steel Block .....	Various Grades
Ductile Iron Casting MA-95L only .....	A536 80-55-06
Plunger Type Rokide® [Chromium Oxide-Coated] .....	316 S.ST. (Other types available include Tungsten Carbide, Ceramic)
Stuffing Boxes, Field-Removable and Replaceable	
Nickel Aluminum Bronze .....	B148-C954
Carbon Steel .....	1020"
Stainless Steel .....	Various Grades
Packing Types Available	
Gland-Loaded, Non-Adjustable .....	Style 838
Spring-Loaded, Braided PTFE Coating & Aramid Fiber .....	Style 140, 0141, 8921K
Spring-Loaded, Cup-Type .....	Style 120X
Valve Cover .....	Dependant on Fluid End Material.
Seals, Stuffing Boxes, Valve Covers .....	Buna-N
Disc Valve Types	
Standard, Disc Type; Acetal Resin .....	Acetal
Optional Disc Type, Hardened and Lapped Stainless Steel .....	17-4 PH S.ST.
Optional, Abrasion Resistant Wing Guided .....	17-4 PH S.ST.
Valve Spring material .....	Inconel®
Valve Seat, Liquid Passage Areas 95L .....	6.26 sq.in.
95M .....	2.35 sq.in.
Avg. Liquid Velocity @ 450 rpm	
through Valves 95L .....	7.68 fps
95M .....	8.45 fps
through Suction Manifold 95L .....	3.60 fps
95M .....	4.21 fps
through Discharge Manifold 95L .....	14.7 fps
95M .....	9.49 fps

All drawings and specifications subject to change without notice.

## MA-95L Triplex Pump (Measurements shown in inches)



## MA-95M Triplex Pump (Measurements shown in inches)



1101 MYERS PARKWAY,  
ASHLAND, OHIO 44805

490 PINEBUSH ROAD, UNIT 4,  
CAMBRIDGE, ONTARIO N1T 0A5

[WWW.PENTAIR.COM/MYERS](http://WWW.PENTAIR.COM/MYERS)

Inconel® is a registered trademark of the Special Metals family of companies.  
Timken® is a registered trademark of The Timken Company.  
Myers® is a registered trademark of Pentair.

For a detailed list of where Pentair trademarks are registered, please visit [www.pentair.com/en/registrations.html](http://www.pentair.com/en/registrations.html). Pentair trademarks and logos are owned by Pentair plc or its affiliates. Third party registered and unregistered trademarks and logos are the property of their respective owners because we are continuously improving our products and services. Pentair reserves the right to change specifications without prior notice. Pentair is an equal opportunity employer.

MA1018 [07/15/20] ©2020 Pentair. All Rights Reserved.