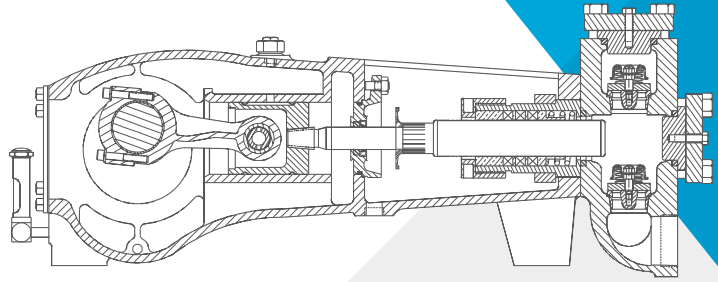


MA-40M(L)(H)

APLEX SERIES, TRIPLEX PLUNGER PUMP



No. of Plungers	3
Maximum Rated Speed.....	550 rpm
Stroke Length	2.50 in. 63.5 mm
Maximum Rated Power	40.0 hp 29.8 kW
Maximum Rod Load	3456 lbs. 15.3 kN
Weight 40M	750 lbs.
40L	810 lbs.
40H	845 lbs.

ENGLISH UNITS (MA-40M)

PLUNGER SIZE IN.	STUFFING BOX BORE IN.	MAX PSI	*GALLON PER/ REV.	250 RPM US GPM	350 RPM US GPM	450 RPM US GPM	550 RPM US GPM	650 RPM US GPM
2.250	2.875	867	0.129	25.8	32.3	45.2	58.1	71.0
2.125	2.875	973	0.115	23.0	28.8	40.3	51.8	63.3
2.000	2.875	1098	0.102	20.4	25.5	35.7	45.9	56.1
1.875	2.875	1249	0.090	17.9	22.4	31.4	40.3	49.3
1.750	2.875	1433	0.078	15.6	19.5	27.3	35.1	43.0
1.625	2.500	1663	0.067	13.5	16.8	23.6	30.3	37.0
1.500	2.500	1951	0.057	11.5	14.3	20.1	25.8	31.6
1.375	2.250	2321	0.048	9.6	12.1	16.9	21.7	26.5
1.250	2.250	2809	0.040	8.0	10.0	13.9	17.9	21.9
1.125	1.750	3468	0.032	6.5	8.1	11.3	14.5	17.8

hp Required @ rpm	14.5	18.1	25.4	32.7	40.0
-------------------	------	------	------	------	------

METRIC UNITS (MA-40M)

PLUNGER SIZE MM	STUFFING BOX BORE MM	MAX PRESS. BAR	*LITER PER/ REV.	250 RPM LPM	350 RPM LPM	450 RPM LPM	550 RPM LPM	650 RPM LPM
57.2	73.0	60.0	0.489	97.7	122.2	171.0	219.9	268.8
54.0	73.0	67.0	0.436	87.1	108.9	152.5	196.1	239.6
50.8	73.0	76.0	0.386	77.2	96.5	135.1	173.7	212.4
47.6	73.0	86.0	0.339	67.8	84.8	118.7	152.6	186.6
44.5	73.0	99.0	0.296	59.1	73.9	103.5	133.0	162.6
41.3	63.5	115.0	0.255	51.0	63.7	89.2	114.7	140.1
38.1	63.5	135.0	0.217	43.4	54.3	76.0	97.7	119.5
34.9	57.1	160.0	0.183	36.5	45.6	63.9	82.1	100.4
31.7	57.1	193.6	0.151	30.1	37.7	52.7	67.8	82.9
28.5	44.5	239.1	0.122	24.5	30.6	42.8	55.0	67.3

kW Required @ rpm	10.8	13.5	18.9	24.4	29.8
-------------------	------	------	------	------	------

MA-40L/40H

ENGLISH UNITS (MA-40L)

PLUNGER SIZE IN.	STUFFING BOX BORE IN.	MAX PSI	*GALLON PER/ REV.	250 RPM US GPM	350 RPM US GPM	450 RPM US GPM	550 RPM US GPM	650 RPM US GPM
2.750	3.500	580	0.193	38.6	48.2	67.5	86.8	106.1
2.625	3.500	637	0.176	35.1	43.9	61.5	79.1	96.6
2.500	3.250	703	0.159	31.9	39.8	55.8	71.7	87.7
2.375	3.250	779	0.144	28.8	36.0	50.3	64.7	79.1
2.250	2.875	867	0.129	25.8	32.3	45.2	58.1	71.0
hp Required @ rpm				14.5	18.1	25.4	32.6	40.0

METRIC UNITS (MA-40L)

PLUNGER SIZE MM	STUFFING BOX BORE MM	MAX PRESS. BAR	*LITER PER/REV.	200 RPM LPM	300 RPM LPM	400 RPM LPM	500 RPM LPM	600 RPM LPM
69.9	88.9	40.1	0.730	146.0	182.4	255.4	328.4	401.4
66.7	88.9	43.9	0.665	133.0	166.3	232.8	299.3	365.8
63.5	82.6	48.5	0.603	120.7	150.8	211.2	271.5	331.8
60.3	82.6	53.7	0.543	108.7	135.8	190.2	244.5	298.8
57.2	73.0	59.7	0.489	97.7	122.2	171.0	219.9	268.8
kW Required @ rpm				10.8	13.5	18.9	24.3	29.8

ENGLISH UNITS (MA-40H)

PLUNGER SIZE IN.	STUFFING BOX BORE IN.	MAX PSI	*GALLON PER/ REV.	250 RPM US GPM	350 RPM US GPM	450 RPM US GPM	550 RPM US GPM	650 RPM US GPM
1.00	1.750	4392	0.026	5.1	6.4	8.9	11.5	14.0
.875	1.500	5000	0.020	3.9	4.9	6.8	8.8	10.7
hp Required @ rpm				14.5	18.2	25.4	32.7	40.0

METRIC UNITS (MA-40H)

PLUNGER SIZE MM	STUFFING BOX BORE MM	MAX PRESS. BAR	*LITER PER/REV.	200 RPM LPM	300 RPM LPM	400 RPM LPM	500 RPM LPM	600 RPM LPM
25.4	44.5	302.8	0.097	19.3	24.1	33.8	43.4	53.1
22.2	38.1	344.7	0.074	14.8	18.5	25.8	33.2	40.6
kW Required @ rpm				10.8	13.6	18.9	24.4	29.8

*Displacement based on 100% Volumetric Efficiency

$$l_{hp} = \frac{USGPM \times (\text{Discharge psig} - 1/2 \text{ Suction psig})}{1542}$$

$$\text{Pump rpm} = \frac{USGPM \text{ Desired}}{USG \text{ per Revolution of Selected Plunger}}$$

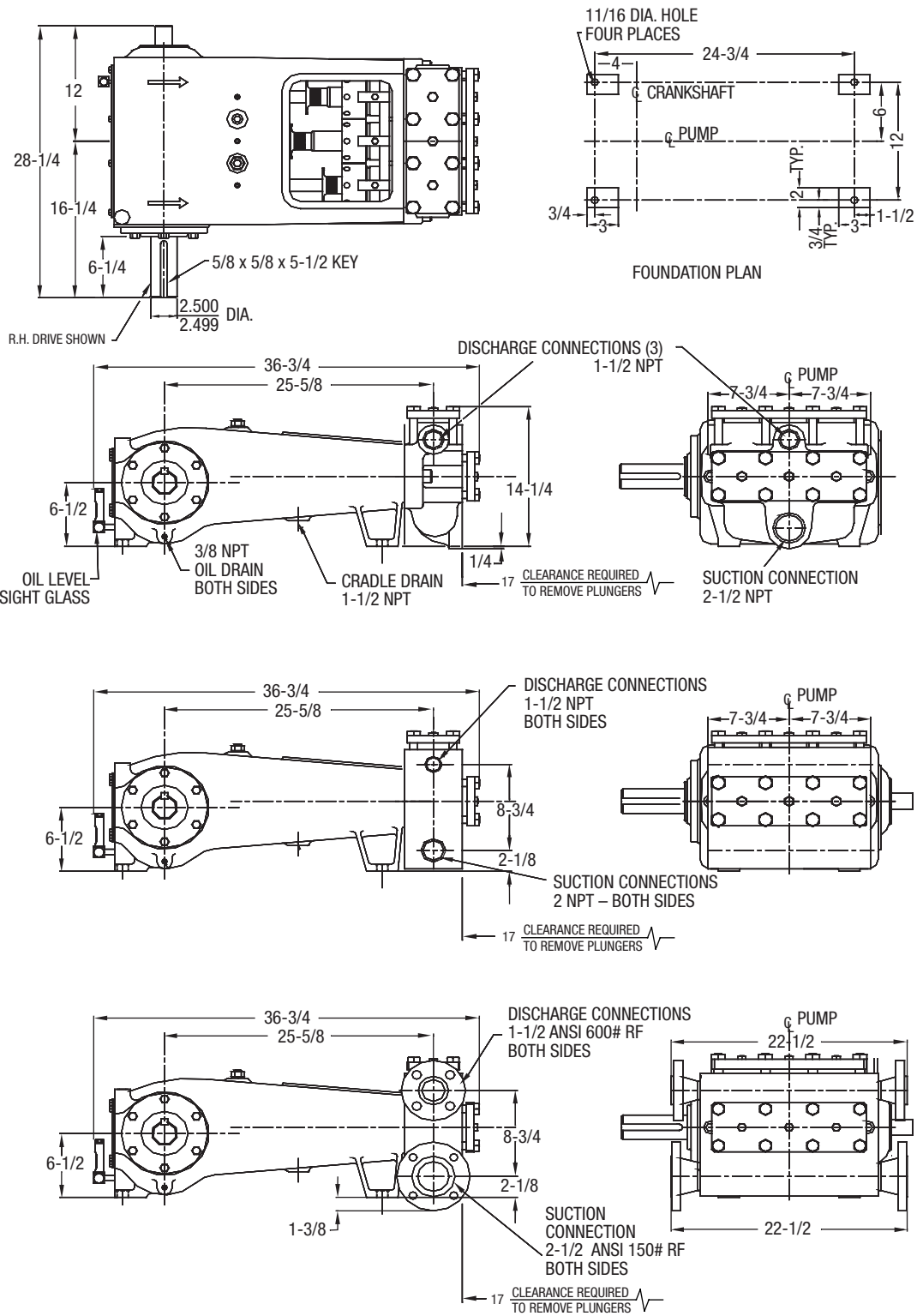
Power based on 90% Mechanical Efficiency

$$l_{kW} = \frac{M^3/HR \times (\text{Discharge Bar} - 1/2 \text{ Suction Bar})}{32.4}$$

$$\text{Pump rpm} = \frac{M^3/HR \text{ Desired}}{M^3 \text{ per Revolution of Selected Plunger}}$$

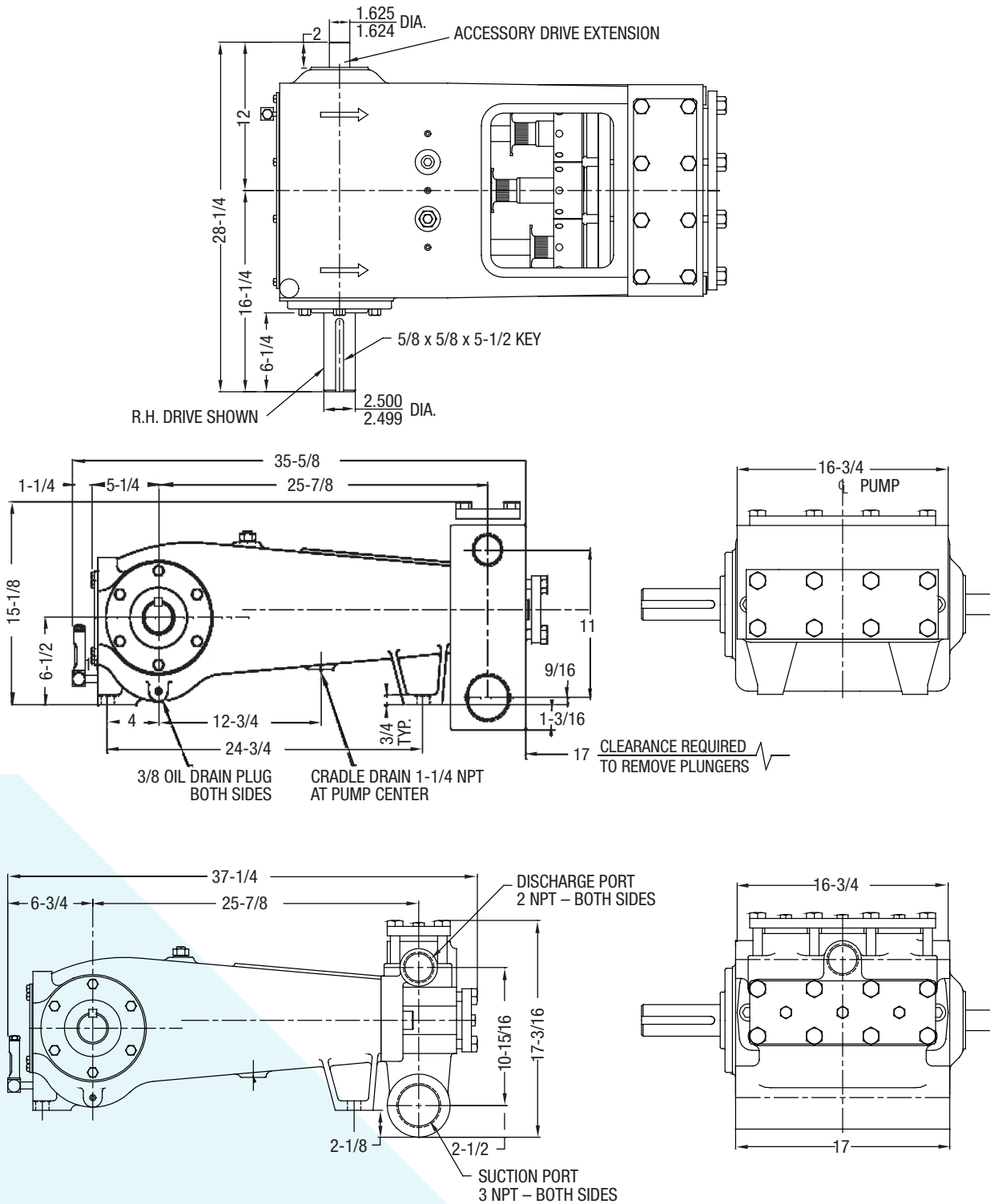
MA-40M TRIPLEX PUMP

Measurements shown in inches



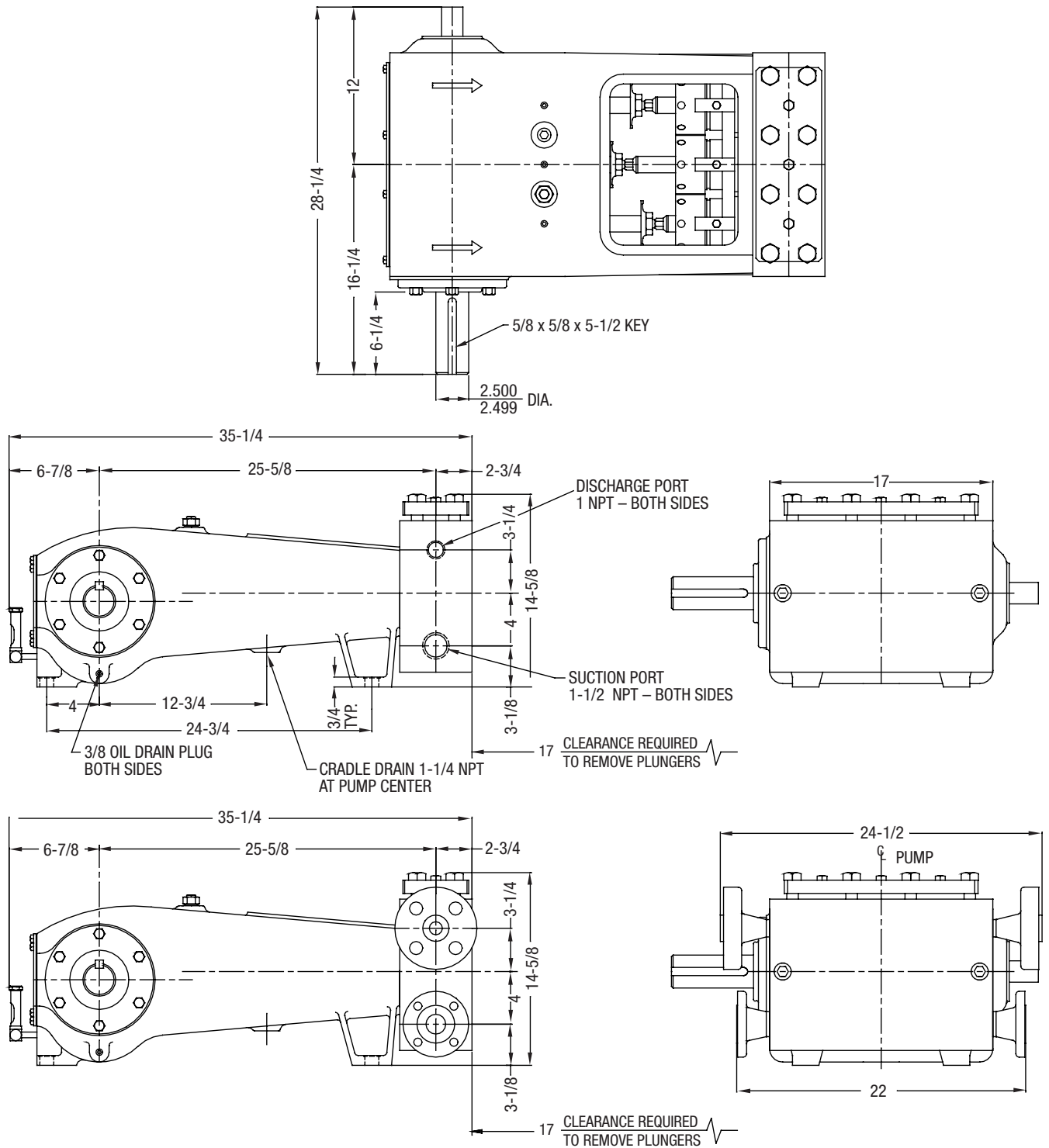
MA-40L TRIPLEX PUMP

Measurements shown in inches



MA-40H TRIPLEX PUMP

Measurements shown in inches



ENGINEERING DATA

MA-40M, MA-40L AND MA-40H TRIPLEX PUMPS

POWER END ENGINEERING DATA

Max. Input Power @ Speed	40 hp @ 550 rpm
Rated Continuous Plunger Load	3,456 lbs.
Max. Rated Continuous Speed	550 rpm
Normal Continuous Speed Range	150 to 500 rpm
Minimum Speed	100 rpm
Oil Capacity	8 U.S. Qts
Power End Oiling System	Splash & Scoop
Power Frame, One-Piece	Cast Iron
Crosshead, Full Cylindrical	Cast Iron
Dia. x Length	4 x 4-1/2 in.
Crankshaft	Ductile Iron
Crankshaft Diameters:	
At Tapered Roller Bearings	3.35 in.
At Crankpin Bearings, Dia. x Length	2-3/4 x 2 in.
Crosshead (Wrist) Pin, Case-Hardened and Ground	AISI 8620
Wrist Pin Bushing, SAE 660, Dia. x Width	1-5/16 x 2 in.
Main Bearings, Tapered Roller	Timken®
Crankpin Bearings, Precision Automotive	Steel Backed, Babbitt-Lined
Extension (Pony) Rod, Integral w/ Plungers	316 S.ST.
Connecting Rod, Automotive Type	Ductile Iron
Average Crosshead Speed @ 550 rpm	229 fpm
Minimum Life Expectancy, Main Bearings, L ₁₀	100,000+ hr.

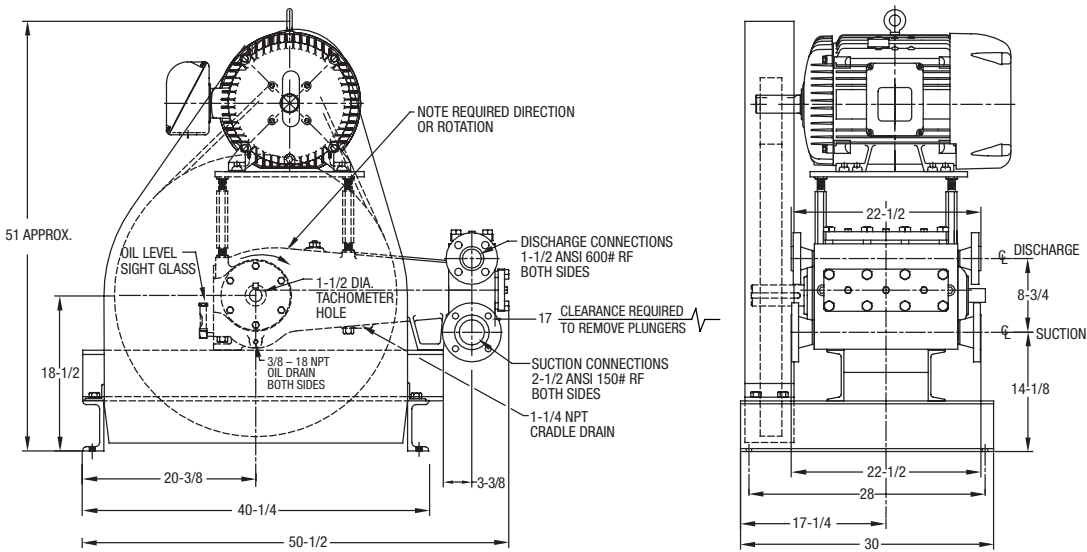
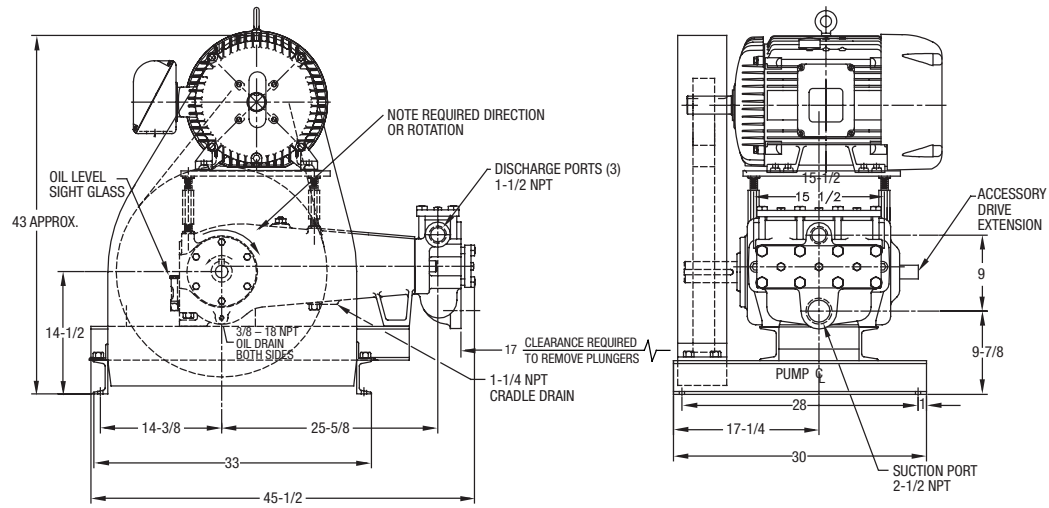
LIQUID END ENGINEERING DATA

Max. Continuous Working Pressure 40M	3468 psi
40L	867 psi
40H	5,000 psi
Hydrostatic Test 40M	4,500 psi
40L	1,300 psi
40H	7,500 psi
Available Liquid End Materials, A.S.T.M.	
Nickel Aluminum Bronze Casting 40M.....	B148-C955
Carbon Steel Block 40M, 40L, 40H	Various Grades
Plunger Type Rokide® (Chromium Oxide-Coated).....	316 S.ST. (Other types available include Tungsten Carbide, Ceramic)
Stuffing Boxes, Field-Removable and Replaceable	
Carbon Steel	Various Grades
Stainless Steel	Various Grades
Packing Types Available	
Gland-Loaded, Non-Adjustable 40M, 40L.....	Style 838
Spring-Loaded, Braided PTFE Coating & Aramid Fiber	Style 140, 0141, 8921K
Spring-Loaded, Cup-Type	Style 120X
Valve Cover and Cyl. Head Plugs.....	Ductile Iron, 416 S.ST.
Retainer Plates, Carbon Steel, A.S.T.M.	1018 CDS
Seals, Stuffing Boxes, Valve Covers, Cyl. Heads	Nitrile
Valve Types	
Standard, Disc Type: Acetal Resin 40M, 40L	Acetal
Optional, Disc Type: Hardened and Lapped Stainless Steel 40M, 40L, 40H	17-4 PH S.ST.
Abrasion Resistant Wing Guided 40M, 40L, 40H	17-4 PH S.ST.
Valve Spring Material	Inconel®
Valve Seat, Liquid Passage Areas	
Plate (Disc) Valves, (Acetal or S.ST.) 40M	2.3 sq.in.
40L	2.4 sq.in.
40H	1.4 sq.in.
Abrasion Resistant Wing Guided Valves 40M.....	1.07 sq.in.
40L	2.4 sq.in.
40H.....	0.7 sq.in.
Avg. Liquid Velocity @ 550 rpm	
through Disc Valves 40M.....	.66 fps
40L98 fps
40H	2.1 fps
through Abrasion Resistant Wing Guided Valves 40M.....	15.0 fps
40L	9.5 fps
40H.....	4.3 fps
through Suction Manifold 40M	4.6 fps
40L	4.8 fps
40H	2.5 fps
through Discharge Manifold 40M	12.8 fps
40L	10.8 fps
40H.....	5.7 fps

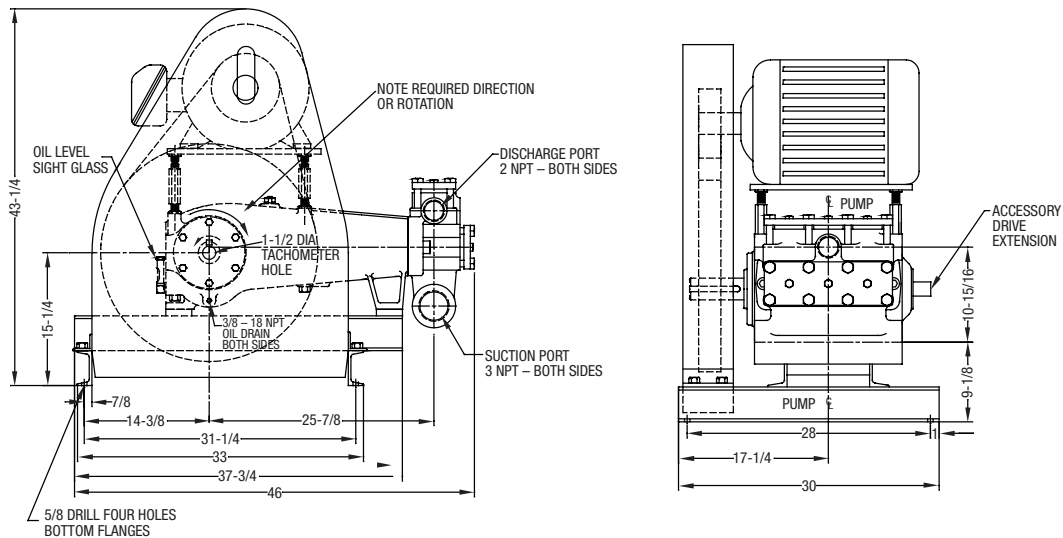
All drawings and specifications subject to change without notice.

MA-40M/40L TRIPLEX PUMP

MA-40M Triplex Pump
(Measurements shown in inches)

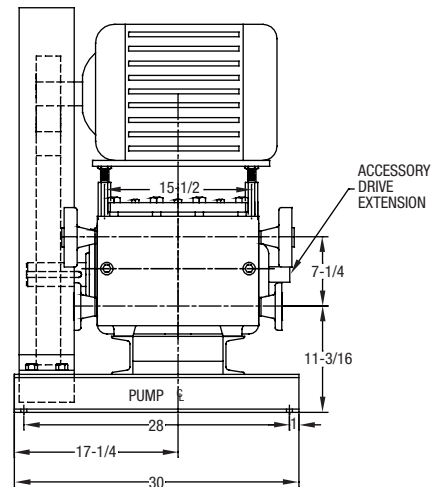
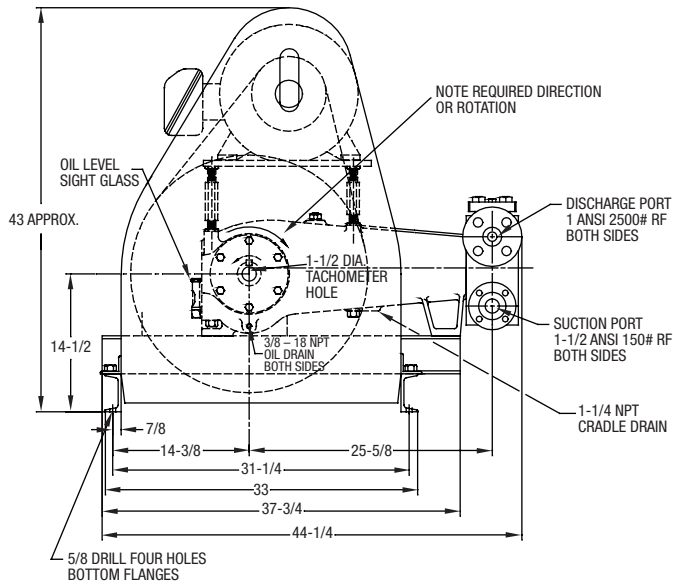
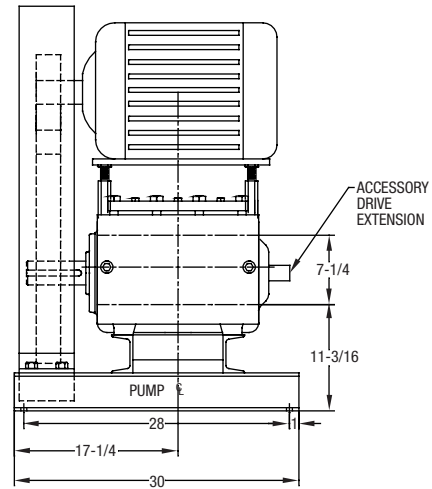
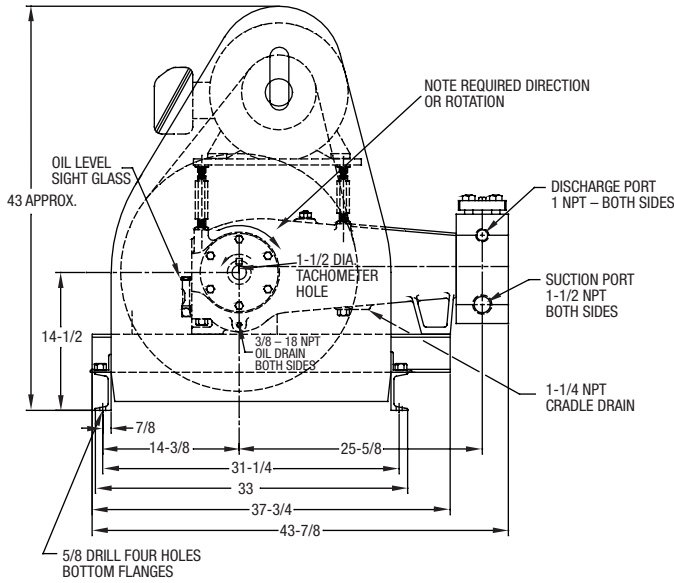


MA-40L Triplex Pump
(Measurements shown in inches)



MA-40H TRIPLEX PUMP

MA-40H Triplex Pump (Measurements shown in inches)



nconel[®] is a registered trademark of the Special Metals family of companies.
Timken[®] is a registered trademark of The Timken Company. Rokide[®] is a registered trademark of Saint-Gobain Abrasives, Inc.

1101 Myers Parkway | Ashland, OH 44805 | Ph: 888.416.9513 | pentair.com/myers

For a detailed list of where Pentair trademarks are registered, please visit www.pentair.com/en/registrations.html. Pentair trademarks and logos are owned by Pentair plc or its affiliates. Third party registered and unregistered trademarks and logos are the property of their respective owners. Because we are continuously improving our products and services, Pentair reserves the right to change specifications without prior notice. Pentair is an equal opportunity employer.

MA10019(02/15/20) ©2020 Pentair. All Rights Reserved.