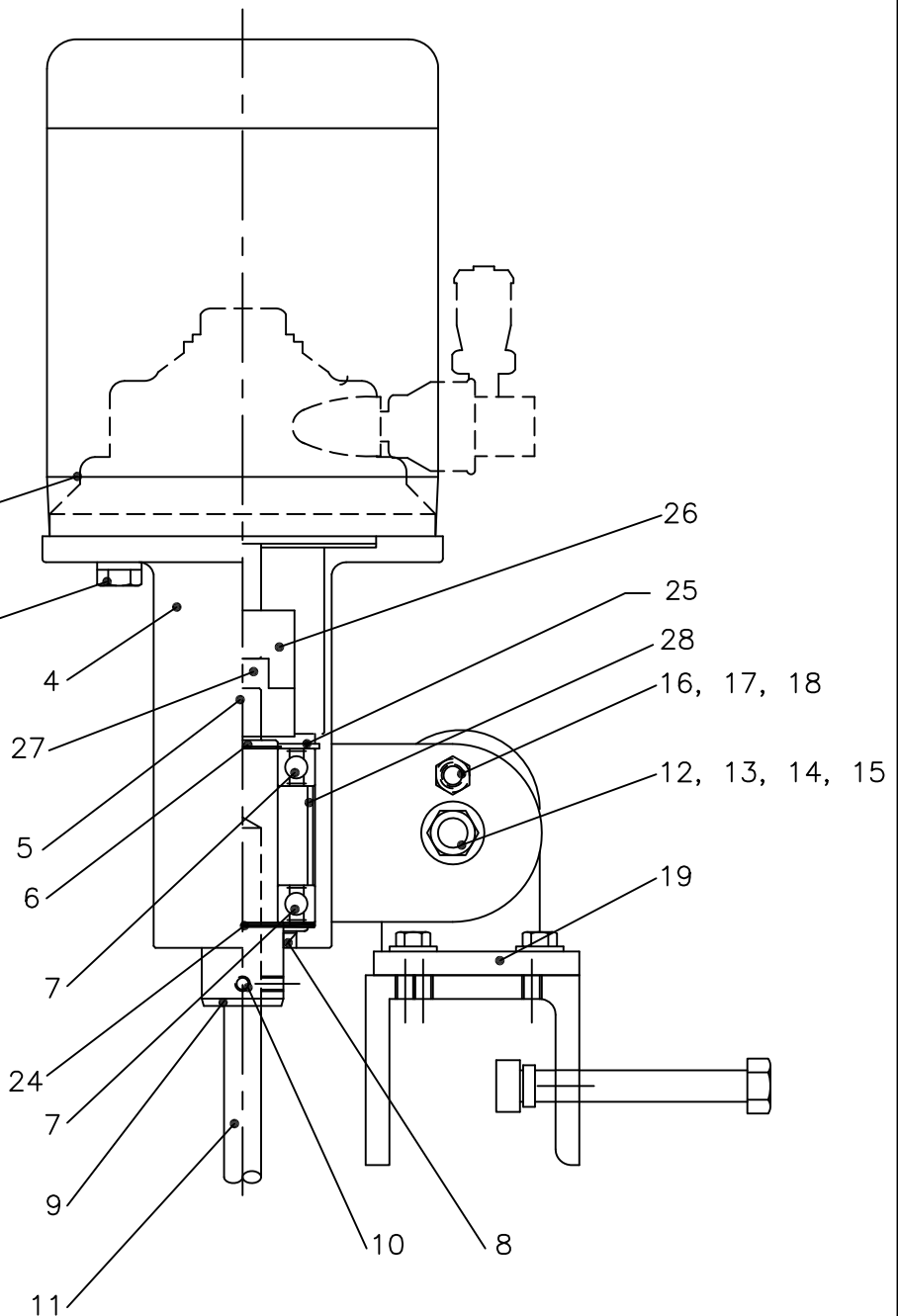


OPTIONAL
MOUNTING PLATE

FOR REFERENCE ONLY

28	1	BEARING SPACER
27	1	COUPLING FLEX ELEMENT
26	2	COUPLING HUB
25	1	SNAP RING
24	1	WAVE WASHER
23	1	MOUNTING PLATE
19	1	CLAMP ASSEMBLY
18	1	LOCK WASHER
17	1	FLAT WASHER
16	1	HEX HEAD CAP SCREW
15	1	HEX NUT
14	1	LOCK WASHER
13	1	FLAT WASHER
12	1	HEX HEAD CAP SCREW
11	1	MIXER SHAFT
10	2	SET SCREW
9	1	CHUCK SHAFT
8	1	LIP SEAL
7	2	BEARING
6	1	SNAP RING
5	1	KEY
4	1	BEARING HOUSING
3	4	LOCK WASHER
2	4	HEX HEAD CAP SCREW
1	1	MOTOR

ITEM NO.	QTY.	PART NAME
----------	------	-----------



NOTE: WHEN ORDERING REPLACEMENT PARTS, SPECIFY
SERIAL NUMBER, MODEL NUMBER AND ITEM NUMBER.

* ALL DIMENSIONS AND WEIGHTS ARE FOR REFERENCE
ONLY UNLESS THE DRAWING IS CERTIFIED.
* ALL EQUIPMENT DESIGN AND APPLICATION DATA SHOWN
HEREIN IS CONFIDENTIAL AND THE PROPERTY OF
BRAUN MIXER. NO USE OR DISCLOSURE THEREOF
MAY BE MADE WITHOUT OUR WRITTEN PERMISSION.



12838 STAINLESS DRIVE
HOLLAND, MI. 49424
PH. 616-399-5600
FAX 616-399-3084

MIXER MODEL
MDSS33/100
OPEN TANK CLAMP OR PLATE MOUNT
DIMENSION AND ASSEMBLY DRAWING

DRAWN BY: GMc DATE: 6-9-04 © 2018

APPROVED BY: DATE:

DWG. NO. A- TK0129 REV.