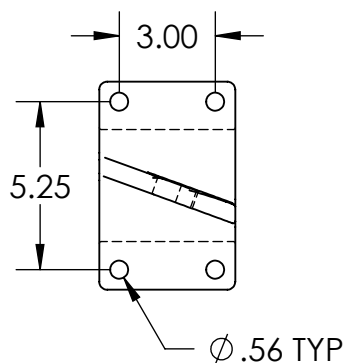


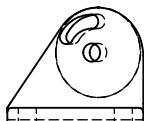
STANDARD MOTOR IS 1/3 HP TEFC,
115V, 1PH, 60 HZ.

MOTOR OPTIONS INCLUDE:

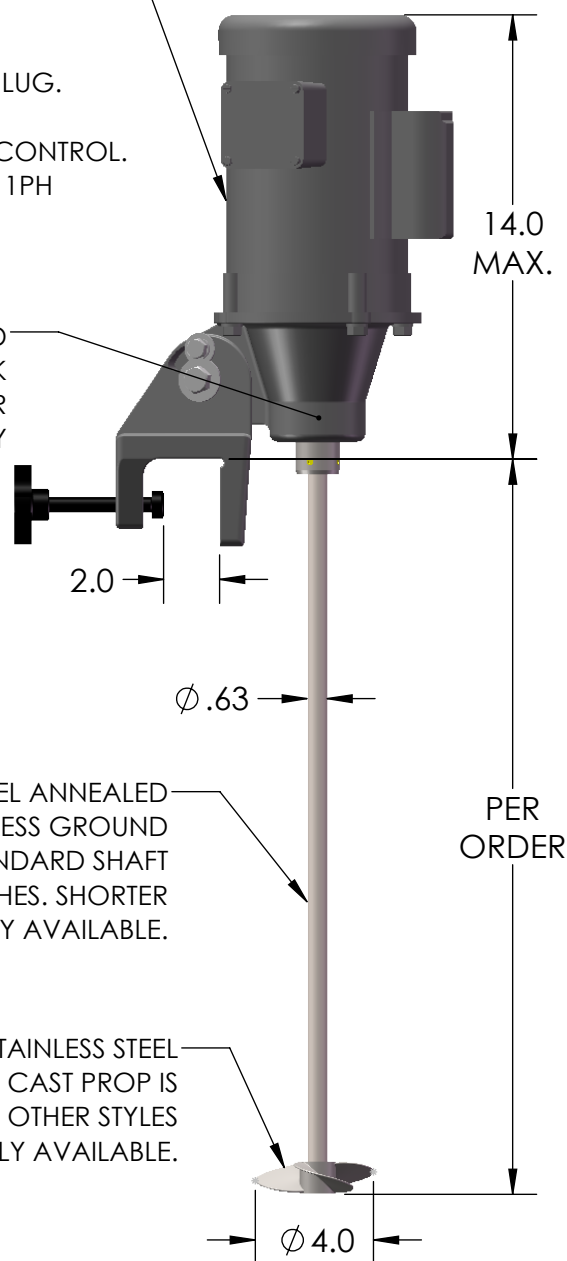
- SWITCH, CORD AND PLUG.
- 3PH TEFC
- DC WITH 115V SPEED CONTROL.
- 1/4 HP TEFC, 115VAC, 1PH
- AIR



OPTIONAL ADJUSTABLE
BEAM MOUNT



PERMANENTLY LUBRICATED
BALL BEARING CHUCK
SHAFT SUPPORT FOR
EXTRA LOAD CAPACITY



316 STAINLESS STEEL ANNEALED
AND CENTERLESS GROUND
SHAFT. STANDARD SHAFT
LENGTH IS 42 INCHES. SHORTER
SHAFTS OPTIONALLY AVAILABLE.

316 STAINLESS STEEL
INVESTMENT CAST PROP IS
STANDARD. OTHER STYLES
OPTIONALLY AVAILABLE.

FOR REFERENCE ONLY

NOTES:

1. CLAMP AND ADJUSTABLE BEAM MOUNT PROVIDE 20° ANGULAR OFF CENTER MOUNTING AND 0 TO 60° VERTICAL ADJUSTMENT.
2. ALL DIMENSIONS IN INCHES
3. APPROX. WGT: 24 LBS.

* ALL DIMENSIONS AND WEIGHTS ARE FOR REFERENCE ONLY
UNLESS THE DRAWING IS CERTIFIED.

* ALL EQUIPMENT DESIGN AND APPLICATION DATA SHOWN
HEREIN IS CONFIDENTIAL AND THE PROPERTY OF BRAWN MIXER,
INC. NO USE OR DISCLOSURE THEREOF MAY BE MADE WITHOUT
OUR WRITTEN PERMISSION.



12838 Stainless Drive
Holland, MI 49424

PH: 616-399-5600
FAX: 616-399-3084

**MIXER MODEL
SD25/33**

DIMENSION AND ASSEMBLY DRAWING

DRAWN BY:BSB DATE: 9/4/2018 © 2018

APPROVED BY:

DATE:

DWG. NO. **A- TK0006**

REV.