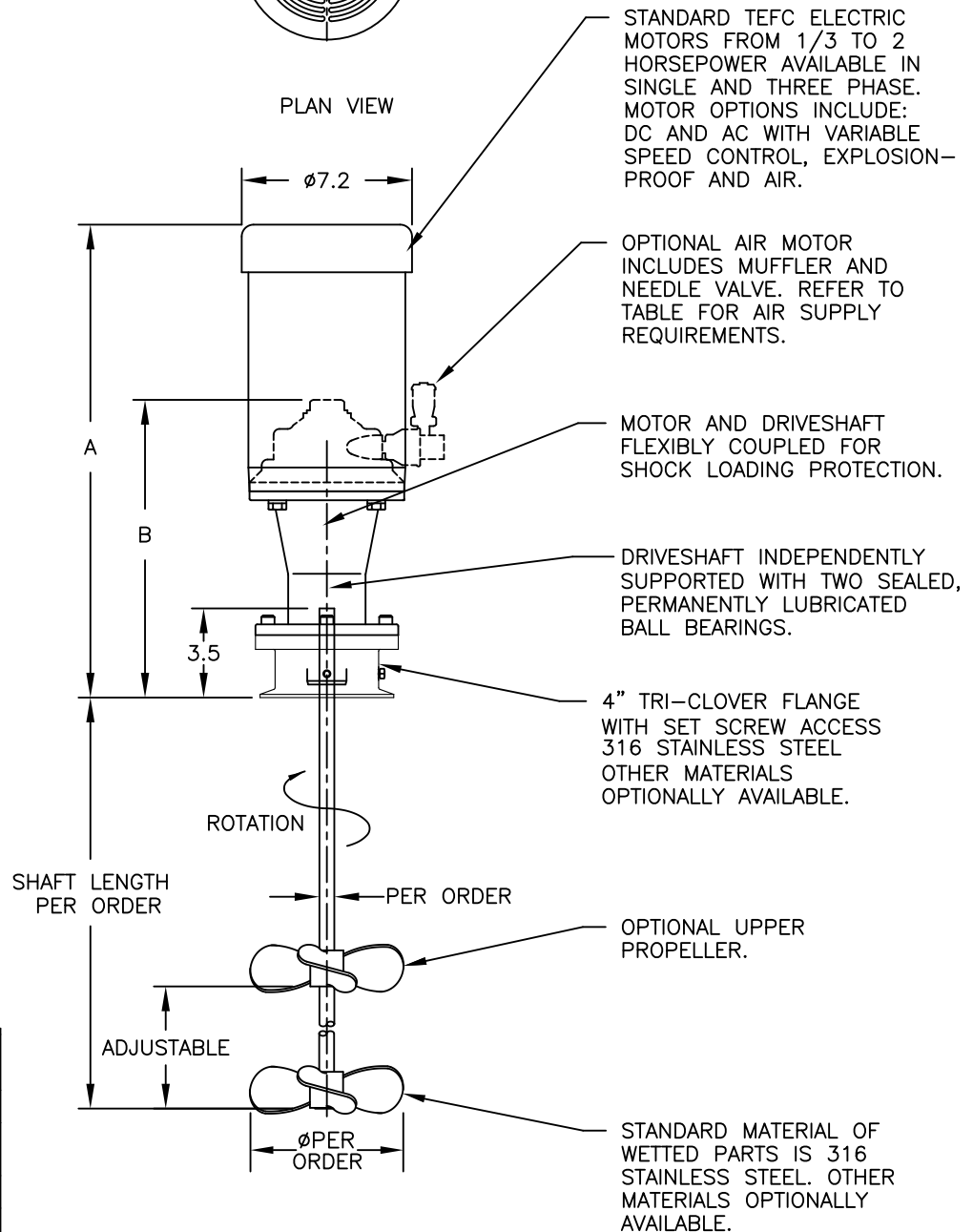


PLAN VIEW



AIR MOTOR HORSEPOWER AND AIR CONSUMPTION			
HORSEPOWER	1/2	1	2
CFM AIR CONSUMPTION	23	40	70
@ PSI	40	80	70
INLET SIZE (NPT)	3/8	3/8	1/2

MIXER MODEL	DIMENSION		
	A	B	*WGT
MD33	18.5	12.4	43
MD50	19.4	12.4	50
MD75	19.8	12.4	53
MD100	20.4	12.4	52
MD150	20.7	14.0	56
MD200	21.7	14.0	60

\*WEIGHT IS IN POUNDS WITH ELECTRIC MOTOR. DOES NOT INCLUDE SHAFT, IMPELLERS, OR AIR MOTOR. THIS IS A MAXIMUM WEIGHT, ACTUAL WEIGHT DEPENDS ON SPECIFIC MOTOR TYPE AND SELECTION.

\*FOR REFERENCE ONLY\*

\* ALL DIMENSIONS AND WEIGHTS ARE FOR REFERENCE ONLY UNLESS THE DRAWING IS CERTIFIED.  
 \* ALL EQUIPMENT DESIGN AND APPLICATION DATA SHOWN HEREIN IS CONFIDENTIAL AND THE PROPERTY OF BRAUN MIXER. NO USE OR DISCLOSURE THEREOF MAY BE MADE WITHOUT OUR WRITTEN PERMISSION.

**BRAUN MIXER**  
 AN INCH COMPANY  
 12838 STAINLESS DRIVE  
 HOLLAND, MI. 49424  
 PH. 616-399-5600  
 FAX 616-399-3084

**MIXER MODEL  
 MD33-200TC**

**DIMENSION AND ASSEMBLY DRAWING**

DRAWN BY: MDK      DATE: 11-1-11      © 2018  
 APPROVED BY:      DATE:

DWG. NO. A-      TK0146      REV. C