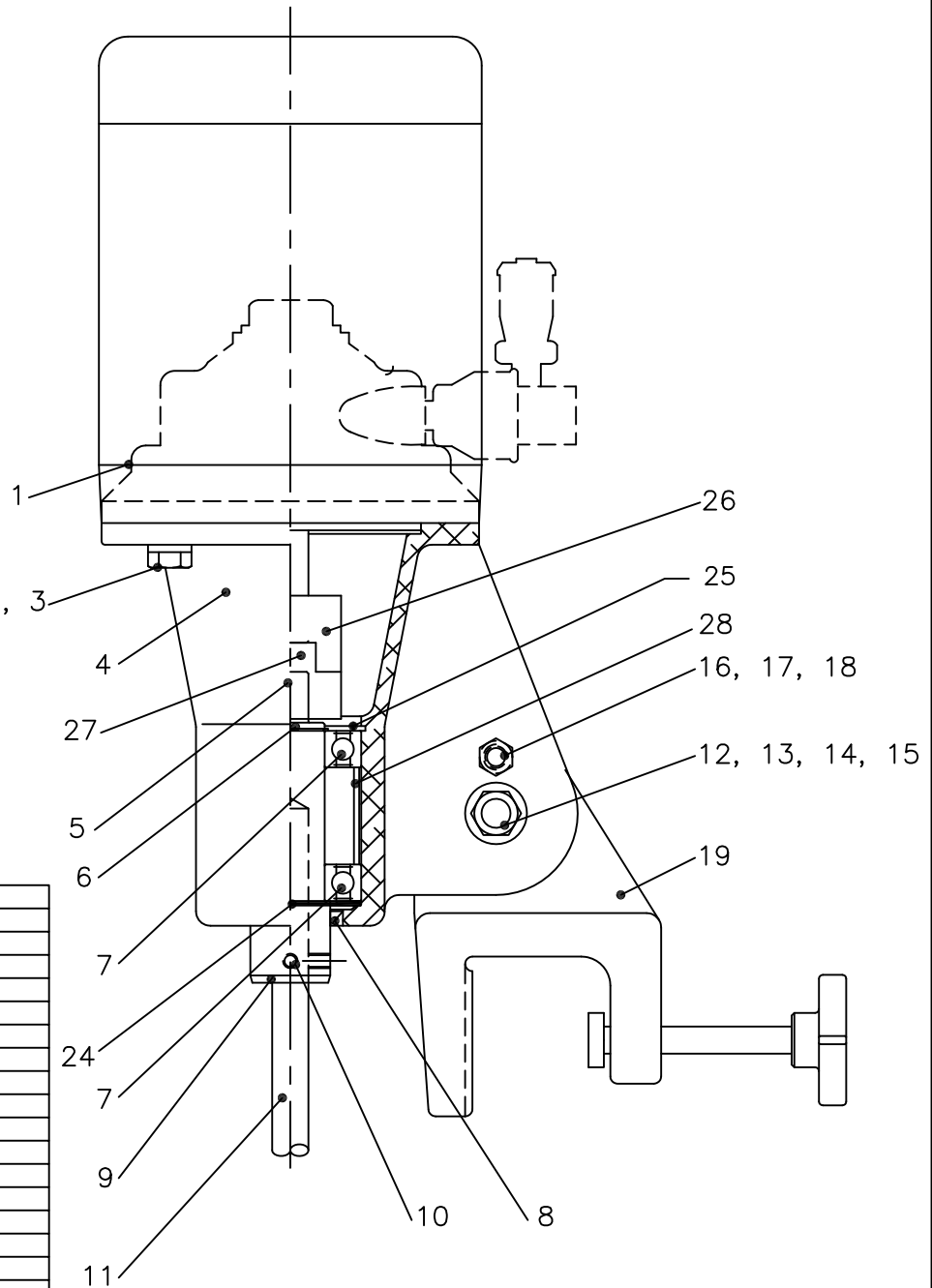


OPTIONAL
MOUNTING PLATE



FOR REFERENCE ONLY

NOTE: WHEN ORDERING REPLACEMENT PARTS, SPECIFY
SERIAL NUMBER, MODEL NUMBER AND ITEM NUMBER.

| | | |
|----|---|-----------------------|
| 28 | 1 | BEARING SPACER |
| 27 | 1 | COUPLING FLEX ELEMENT |
| 26 | 2 | COUPLING HUB |
| 25 | 1 | SNAP RING |
| 24 | 1 | WAVE WASHER |
| 23 | 1 | MOUNTING PLATE |
| 19 | 1 | CLAMP ASSEMBLY |
| 18 | 1 | LOCK WASHER |
| 17 | 1 | FLAT WASHER |
| 16 | 1 | HEX HEAD CAP SCREW |
| 15 | 1 | HEX NUT |
| 14 | 1 | LOCK WASHER |
| 13 | 1 | FLAT WASHER |
| 12 | 1 | HEX HEAD CAP SCREW |
| 11 | 1 | MIXER SHAFT |
| 10 | 2 | SET SCREW |
| 9 | 1 | CHUCK SHAFT |
| 8 | 1 | LIP SEAL |
| 7 | 2 | BEARING |
| 6 | 1 | SNAP RING |
| 5 | 1 | KEY |
| 4 | 1 | BEARING HOUSING |
| 3 | 4 | LOCK WASHER |
| 2 | 4 | HEX HEAD CAP SCREW |
| 1 | 1 | MOTOR |

| ITEM NO. | QTY. | PART NAME |
|-------------|------|-----------|
|-------------|------|-----------|

* ALL DIMENSIONS AND WEIGHTS ARE FOR REFERENCE
ONLY UNLESS THE DRAWING IS CERTIFIED.
* ALL EQUIPMENT DESIGN AND APPLICATION DATA SHOWN
HEREIN IS CONFIDENTIAL AND THE PROPERTY OF
BRAUN MIXER. NO USE OR DISCLOSURE THEREOF
MAY BE MADE WITHOUT OUR WRITTEN PERMISSION.



12838 STAINLESS DRIVE
HOLLAND, MI. 49424
PH. 616-399-5600
FAX 616-399-3084

DRAWN BY: GMc DATE: 6-9-04 © 2018

APPROVED BY: DATE:

MIXER MODEL
MD25/200
OPEN TANK CLAMP OR PLATE MOUNT
DIMENSION AND ASSEMBLY DRAWING

DWG. NO. A- TK0127 REV.