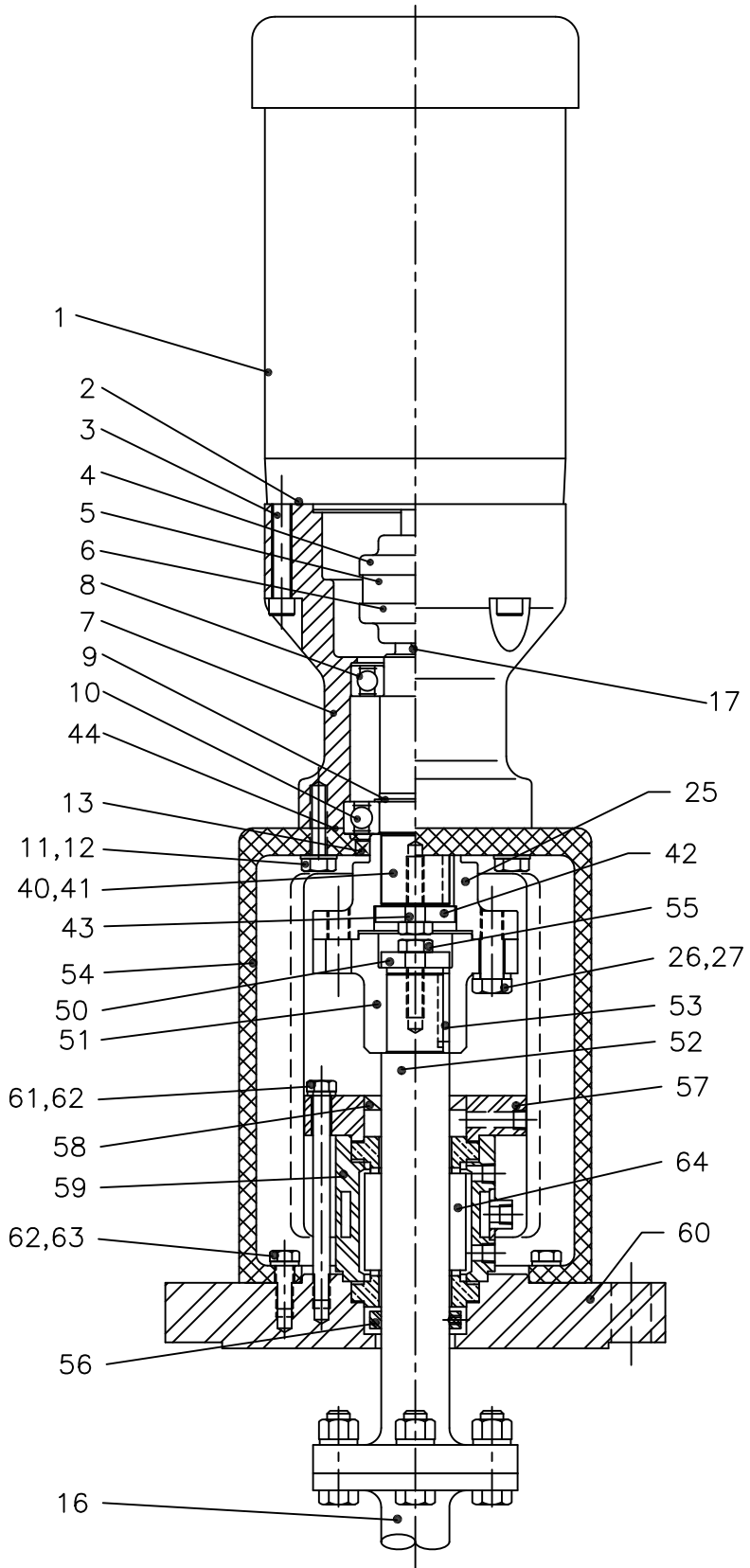


WHEN ORDERING REPLACEMENT PARTS,  
SPECIFY MODEL NUMBER, SERIAL NUMBER  
AND ITEM NUMBER.

REFER TO SEAL ASSEMBLY DRAWING  
FOR SEAL DETAIL.

\* DENOTES RECOMMENDED SPARE PARTS

64	1	SEAL ASSEMBLY	*
63	6	HEX HEAD CAP SCREW	
62	10	LOCK WASHER	
61	4	HEX HEAD CAP SCREW	
60	1	MOUNTING FLANGE	
59	1	SEAL HOUSING	
58	1	OIL SEAL	*
57	1	SEAT RETAINER	
56	1	SHAFT COLLAR	
55	1	HEX HEAD CAP SCREW	
54	1	PEDESTAL	
53	1	KEY	
52	1	SEAL SHAFT	
51	1	REMOVABLE COUPLING	
50	1	THRUST WASHER	
44	1	O-RING	
43	1	HEX HEAD CAP SCREW	
42	1	THRUST WASHER	
41	1	KEY	
40	1	DRIVE SHAFT	
31	4	LOCK WASHER	
30	4	HEX HEAD CAP SCREW	
27	4	LOCK WASHER	
26	4	HEX HEAD CAP SCREW	
25	1	DRIVESHAFT COUPLING	
17	1	KEY	
16	1	MIXER LOWER SHAFT	
13	1	OIL SEAL	*
12	6	LOCK WASHER	
11	6	HEX HEAD CAP SCREW	
10	1	BALL BEARING	*
9	1	SNAP RING	
8	1	BALL BEARING	*
7	1	HOUSING	
6	1	COUPLING HUB	
5	1	SLEEVE	*
4	1	COUPLING HUB	
3	4	SOCKET HEAD CAP SCREW	
2	1	O-RING	
1	1	MOTOR	



\*FOR REFERENCE ONLY\*

ITEM NO.	QTY.	PART NAME
----------	------	-----------

\* ALL DIMENSIONS AND WEIGHTS ARE FOR REFERENCE ONLY UNLESS THE DRAWING IS CERTIFIED.  
\* ALL EQUIPMENT DESIGN AND APPLICATION DATA SHOWN HEREIN IS CONFIDENTIAL AND THE PROPERTY OF BRAUN MIXER. NO USE OR DISCLOSURE THEREOF MAY BE MADE WITHOUT OUR WRITTEN PERMISSION.



12838 STAINLESS DRIVE  
HOLLAND, MI. 49424  
PH. 616-399-5600  
FAX 616-399-3084

MIXER MODEL  
BDF33 THRU 500-S/2  
WITH DOUBLE MECHANICAL SEAL  
DIMENSION AND ASSEMBLY DRAWING

DRAWN BY: Gmc DATE: 2-1-99 © 2018

APPROVED BY: DATE:

DWG. NO. A- TK0096

REV.