

# Petrochemicals / Chemicals Pump Portfolio



## STANDARD PROCESS



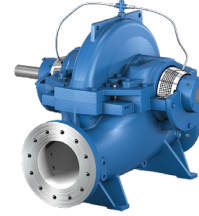
Ansichem



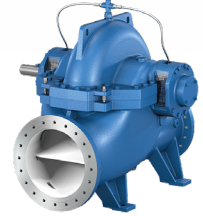
MegaCPK



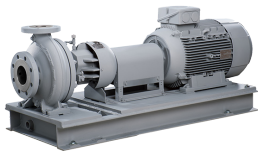
CPKN



Omega



RDLO



HPK-L



KWP



Multitec



KRT



Amacan

## SEALLESS



Magnochem Bloc



Magnochem D



Magnochem W



Magnochem 685

## VERTICAL



B Pump



PNW / SNW



SEZ



UPA



Estigia

# Petrochemicals / Chemicals Pump Portfolio



**PUFFER** Rotating Equipment

Pumps & Parts ▪ Pump Skids ▪ Repairs & Services

12305 Kurland Dr, Houston, TX 77034

RotatingEquipment@puffer.com 281-240-2000

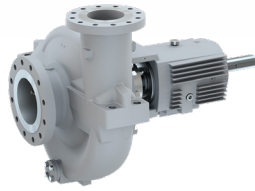


Authorized Sales Partner

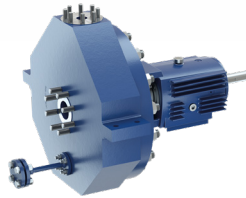
## API 610 (OH2)



RPH



RPH-HW



RPH-LF

## API 610 (BB2)



RPHb



RPHd



RPHbd

## API 610 (BB3, BB4, BB5)



CHTRa



HG



CHTR

## API 610 (VS1, VS4, VS6)



WKB



RPH-V



WKTR / WKTR-E

### Applications:

- Upstream Production
- Midstream Transport & Storage
- Downstream Hydrocarbon Refining
- Olefins & Aromatics (Fluid Catalytic Cracking)
- Natural Gas Processing
- Synthesis Gas Processing
- Olefins (Steam Cracking)
- Fertilizer Production
- Acids Production
- Alkali, Alkali Salts & Bases Production
- Methanol Conversion
- Cumene Production & Conversion
- Steam Methane Reforming (SMR)
- Autothermal Reforming (ATR)
- Partial Oxidation (POX)
- Alkaline Electrolysis (AEL)
- Proton Electrolyze Membrane (PEM)
- High Temperature Electrolysis (HTE)
- Ammonia
- Synthetic Fuels
- Liquid-Organic Hydrogen Carrier
- Pre-Combustion
- Post-Combustion
- Oxyfuel Combustion
- CO<sub>2</sub> Compression & Transport
- CO<sub>2</sub> Injection & Storage