



## **SUPERIOR INDUSTRIAL PUMPING SOLUTIONS**

Expertise that delivers. Performance that excels.



**Pumps & Parts**



**Pump Skids**



**Repairs & Services**

# ABOUT US



For over 80 years, customers have trusted **Puffer-Sweiven** to help their facilities operate safely, reliably, and efficiently. We work alongside you to understand your process challenges and deliver solutions that improve performance, reduce downtime, and support long-term success.



Our **Rotating Equipment** team, built on the trusted legacy of Bullen Pump, delivers proven, high-performance pumping solutions for demanding industrial applications. Our broad portfolio gives you the confidence to select the right technology—whether your need is straightforward or highly specialized.

Beyond products, our experienced service team supports all brands and technologies of rotating equipment to help you maximize uptime and protect your investment. When off-the-shelf solutions aren't enough, our team partners with you to refine existing pump skid designs or engineer customized configurations that meet your unique process requirements.

That's the difference you can count on.  
**Expertise that delivers. Performance that excels.**

# BRANDS



## Reliable Pumps for Critical Applications

KSB is a globally recognized leader in industrial pumping technology, trusted for delivering exceptional reliability, superior quality, and high-performance solutions for demanding applications. Their comprehensive portfolio includes Standard Process, Sealless, General Service, Thermal Transfer, Vertical, API 610, Multistage, In-line, and Solids Handling pumps—supporting critical operations across industries worldwide.



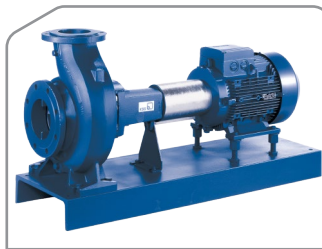
**Ansi chem**

ANSI PROCESS



**Magochem**

MAGNETIC DRIVE



**Etanorm**

GENERAL SERVICE



**Multitec**

RING-SECTION



**Movitec**

MULTI-STAGE



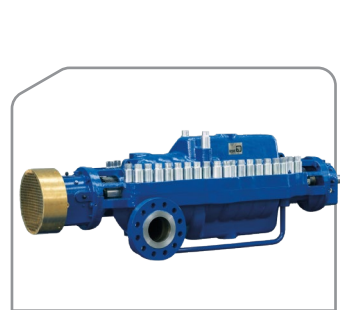
**KRT**

SUBMERSIBLE



**Estigia**

VERTICAL



**CHTRa**

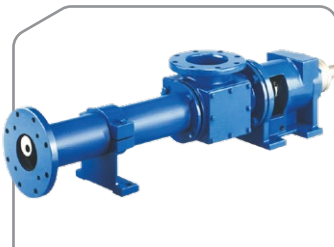
API 610

# BRANDS



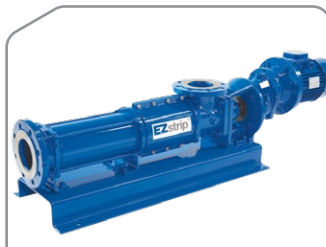
## Progressive Cavity Pumps and Grinders

Moyno is the worldwide leader in progressive cavity pumps, ideal for chemical, oil and gas, food and beverage, mineral processing, and pulp and paper applications. Designed for pumping viscous, abrasive, corrosive, and solids-laden slurries and sludges, they minimize pulsation, shear, and product degradation. With low wear and gentle handling, they're perfect for shear-sensitive materials like polymers.



**2000 Series**

GEAR JOINT DESIGN



**EZstrip**

MAINTAIN-IN-PLACE



**500**

SIMPLE DESIGN



**Muncher**

GRINDER

## Scion Technology

*Next-generation progressive cavity pump technology*

- ✓ Shorter Footprint
- ✓ Reduced Weight
- ✓ Smoother Operation
- ✓ Serviceability First
- ✓ Better Value



**2000 Series w/ Scion**

GEAR JOINT



**EZstrip w/ Scion**

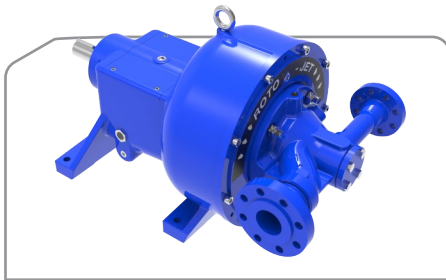
PIN JOINT

# BRANDS



## High-Pressure Pitot Tube Pumps

Roto-Jet pitot tube pumps are engineered for exceptional performance in low-flow, high-head applications. Ideal for high-pressure water showers, boiler feed, central cleaning systems, and deep well injection, Roto-Jet pumps deliver durable, stable operation by minimizing hydraulic forces. API 610-compliant models are also available for applications requiring the highest industry standards.



**Overhung Design**

RO, RO-H, R-11 MODELS

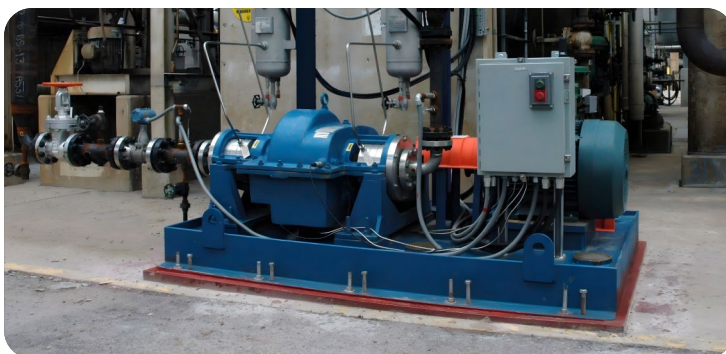


**Between Bearings Design**

RO-FT MODEL



**Pitot Tube**

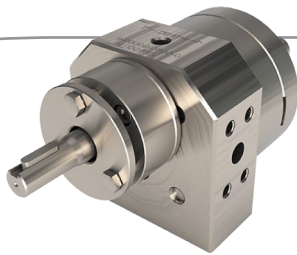


# BRANDS



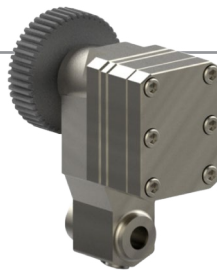
## Precision-Gear Metering Pumps

Zenith precision-gear metering pumps deliver accurate, pulse-free flow for critical industrial applications. Trusted across fiber and polymer processing, adhesives, paints, food, and medical markets, they provide high metering accuracy, uniform output, and long wear life over a wide range of fluid and pressure conditions—making Zenith pumps synonymous with precision and reliability.



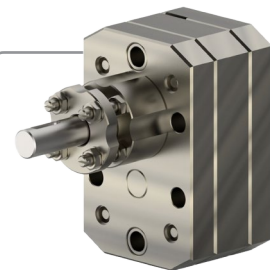
### 9000 Series

COMPACT & EFFICIENT



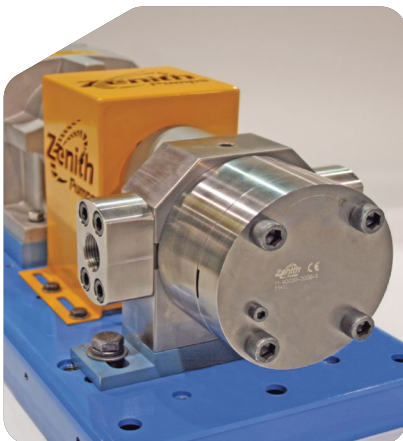
### B Series

OUTER DRIVE GEAR



### H Series

HIGH TEMPERATURE



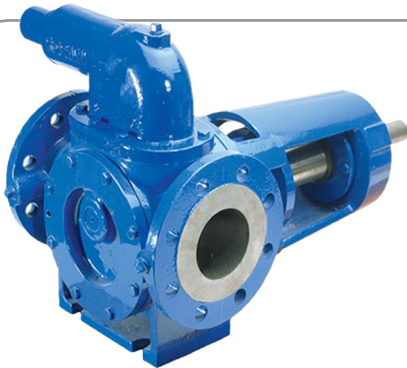
## Applications

- ✓ Dosing
- ✓ Fill
- ✓ Injection
- ✓ Coating
- ✓ Spraying
- ✓ Extrusion

## Markets

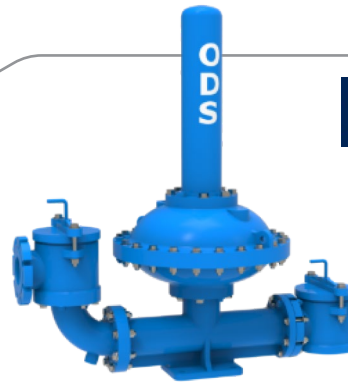
- ✓ General Industry
- ✓ Oil and Gas
- ✓ Power Generation
- ✓ Chemical Process
- ✓ Pulp and Paper
- ✓ Food and Beverage
- ✓ Pharmaceutical and Medical
- ✓ Semiconductor and Electronics
- ✓ Fiber
- ✓ Paints
- ✓ Plastic Extrusion

# BRANDS



**DESMI**  
Make life flow

ROTAN internal gear pumps for heavy duty viscous liquid pumping



**FLSMIDTH**

ODS air-operated diaphragm pumps for severe slurry and solids transfer services



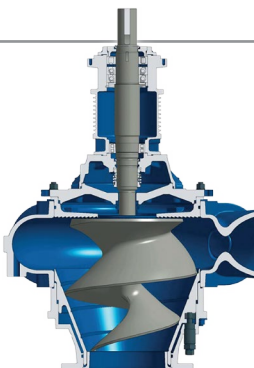
**GRUNDFOS**

Premium digital and mechanical dosing pumps, dosing skids; available as API 675 compliant



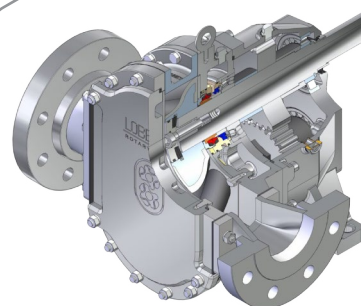
**HEVY PUMPS** | **TOYO PUMPS**

Heavy duty solids handling pumps: submersible, cantilever vertical, horizontal



**hidrostal**

Screw centrifugal pumps with low shear and gentle handling impellers



**LOBPRO**  
ROTARY PUMPS

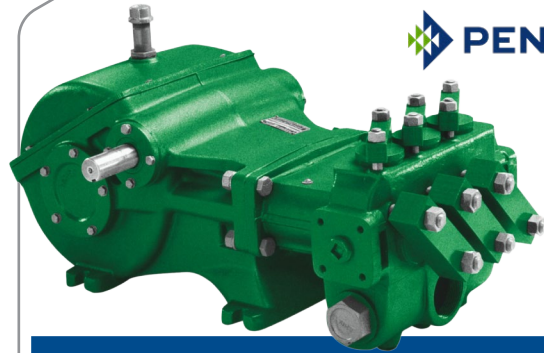
Sludge-handling positive displacement rotary lobe pumps

# BRANDS



**Metso**

Horizontal and vertical slurry pumps capable of handling tough and abrasive duties



**PENTAIR**

Myers and Myers Aplex triplex and quintuplex reciprocating pumps



**WEMCO®**

WSP self-prime pumps, Torque-Flow recessed impeller pumps



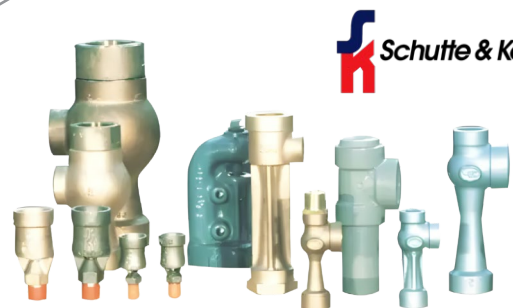
**AUTO  
RODDER**

Automated solution designed to keep instrument tapping points clear in industrial processes



**BRAWN  
MIXER®**  
AN INEE COMPANY

High capacity industrial mixers, portable mixers, side entry mixers, custom mixing systems



**Schutte & Koerting**

Eductors, steam jet vacuum systems, desuperheaters, thermocompressors

# PUMP SKIDS

Leveraging deep subject-matter expertise across multiple business units, our team enhances existing pump-skid designs or creates new, purpose-built configurations tailored to your exact application.

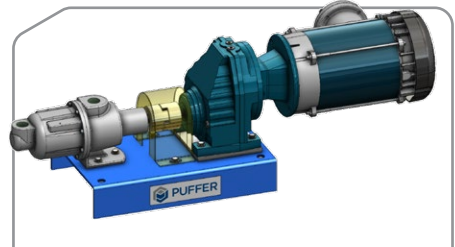
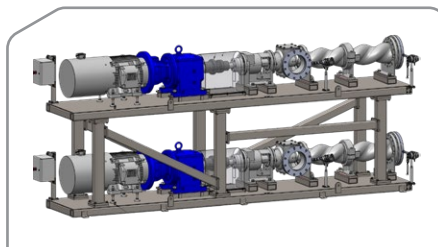
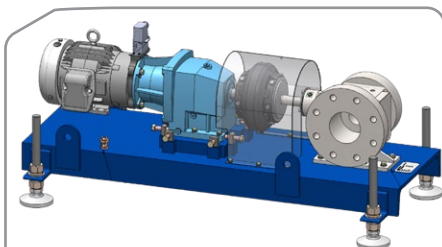
We deliver fully turnkey pump-skid packages—from design and fabrication to startup and ongoing support—built around pump reliability and extended seamlessly with controls, valving, instrumentation, and structural components.

With a client-focused, safety-driven approach, we offer unmatched flexibility in engineering, backed by the strength of our principal vendors and the Emerson family of technologies.

Our streamlined development process includes identifying challenges, engineering a tailored pump-skid solution, executing with precision, and providing training and continuous after-sales support to ensure lasting performance and confidence.

## Pumping Solutions

- ✓ Produced Water Metering, Injection, Offloading Skids
- ✓ Pipeline Injection Skids
- ✓ Custody Transfer Pump Skids
- ✓ Sump Pump Transfer Stations
- ✓ LNG Loading Pumps
- ✓ Salt Dome Injection
- ✓ Boiler Feedwater Makeup
- ✓ Chemical Injection
- ✓ Oil/Water Separation
- ✓ Slurry/Catalyst Pumps
- ✓ Wastewater Treatment



# REPAIRS AND SERVICES



We're more than a repair shop—we're your trusted partner in maximizing uptime and achieving operational certainty. With our focus on predictive and performance based maintenance, we're here to keep your equipment running smoothly and reliably.

When repairs are needed, our experienced team is ready to service a wide variety of pump types and brands, delivering exceptional lead times and unbeatable value. You can count on us to keep your operations running seamlessly.

## Pump Repairs & Rebuilds

- ✓ Progressive Cavity Pumps
- ✓ High-Pressure Pitot-Tube Pumps
- ✓ ANSI, API Pumps
- ✓ Split Case Pumps
- ✓ Vertical Turbine Pumps
- ✓ Rotary Gear, Vane, and Lobe Pumps
- ✓ Submersible Pumps



Before



After



Before



After



Before



After

# REPAIRS AND SERVICES

## Field Services

- ✔ Installation and Start-Up
- ✔ Bearing and Lubricant Condition
- ✔ Laser Shaft Alignment
- ✔ Discharge Pressure Check
- ✔ Shaft Seal Inspection
- ✔ Equipment Foundation Check







## Reliability Services

- ✔ Predictive Maintenance Services and Programs (Vibration, Lubrication, Thermography, Ultrasonic)
- ✔ Machinery Monitoring Needs Assessment and Recommendations
- ✔ Vibration Sensor and Monitoring System Installation, Upgrades, and Integration
- ✔ Pre- and Post-Outage Vibration Baseline Data Collection
- ✔ Local and Remote Diagnostic Support
- ✔ Database and Route Creation and Optimization



Ask us about our **Pump Installation Vibration Commissioning** package. Using industry-standard diagnostics and precision tools, we verify that your pump systems meet vibration acceptance criteria.



-  281-240-2000
-  [puffer.com](http://puffer.com)
-  12305 Kurland Dr, Houston, TX 77034
-  [RotatingEquipment@puffer.com](mailto:RotatingEquipment@puffer.com)