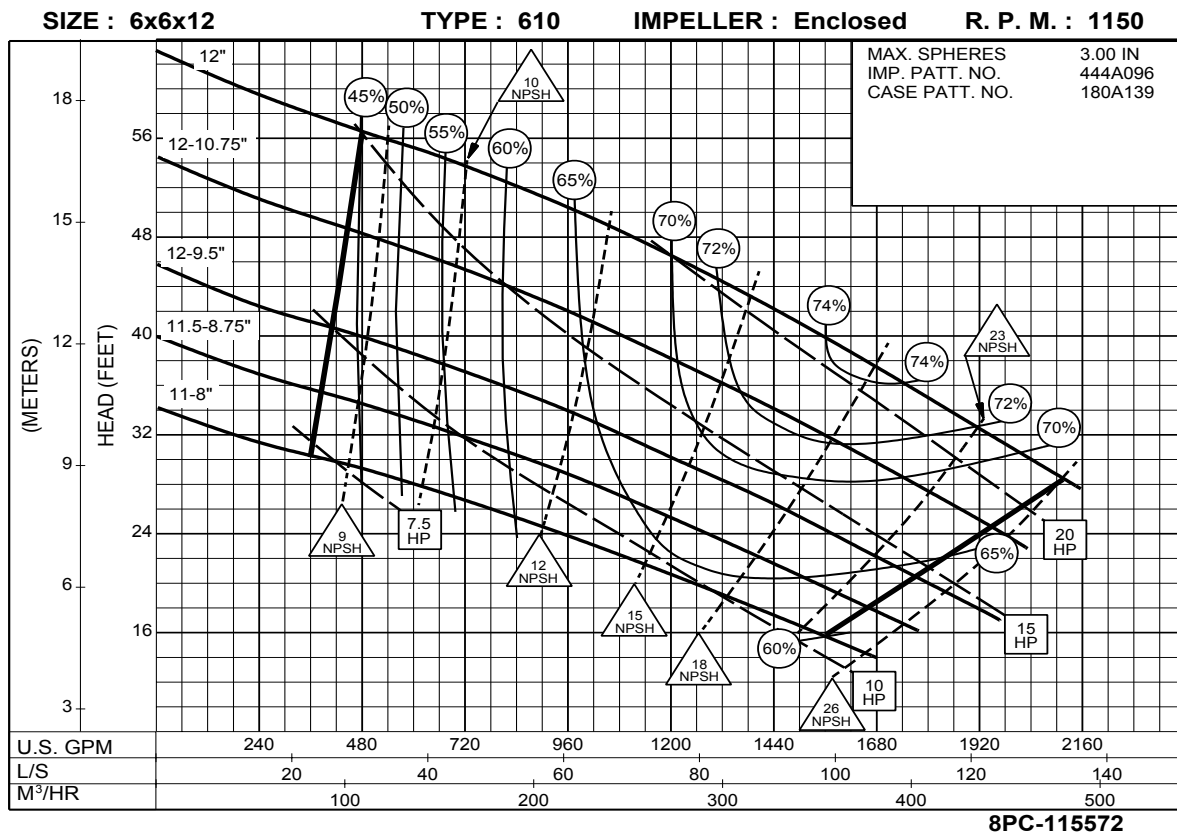
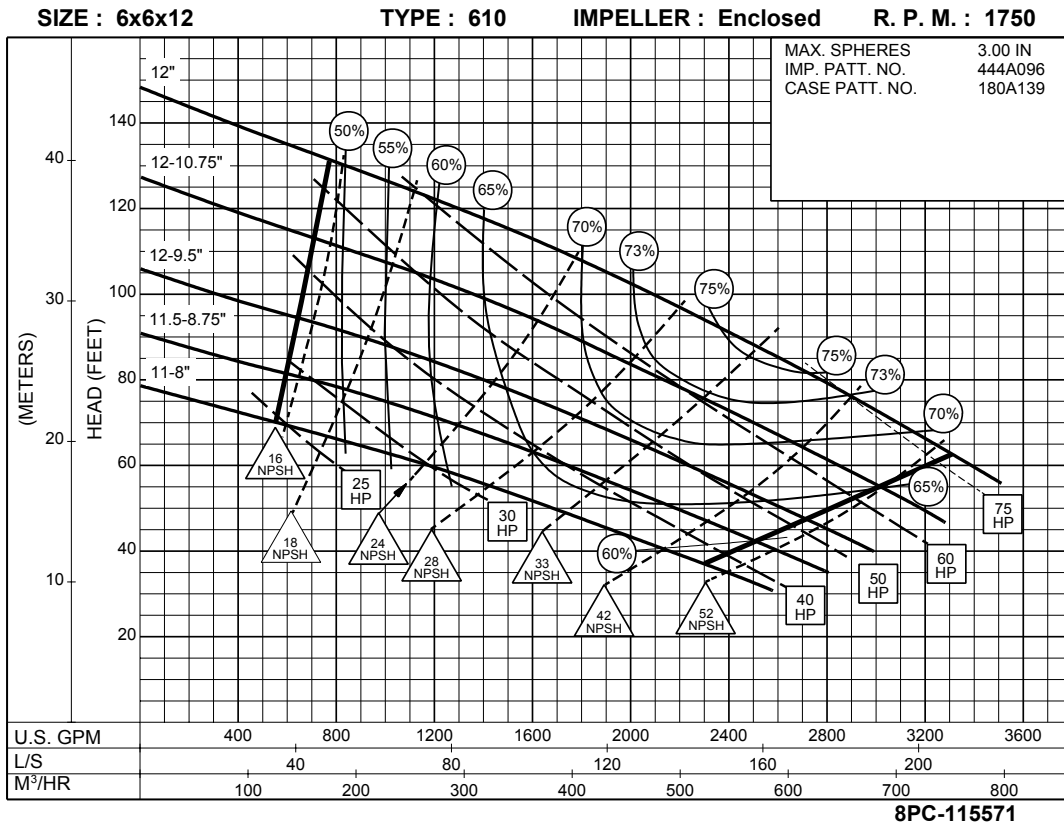


# 6 x 6 x 12 SERIES 610

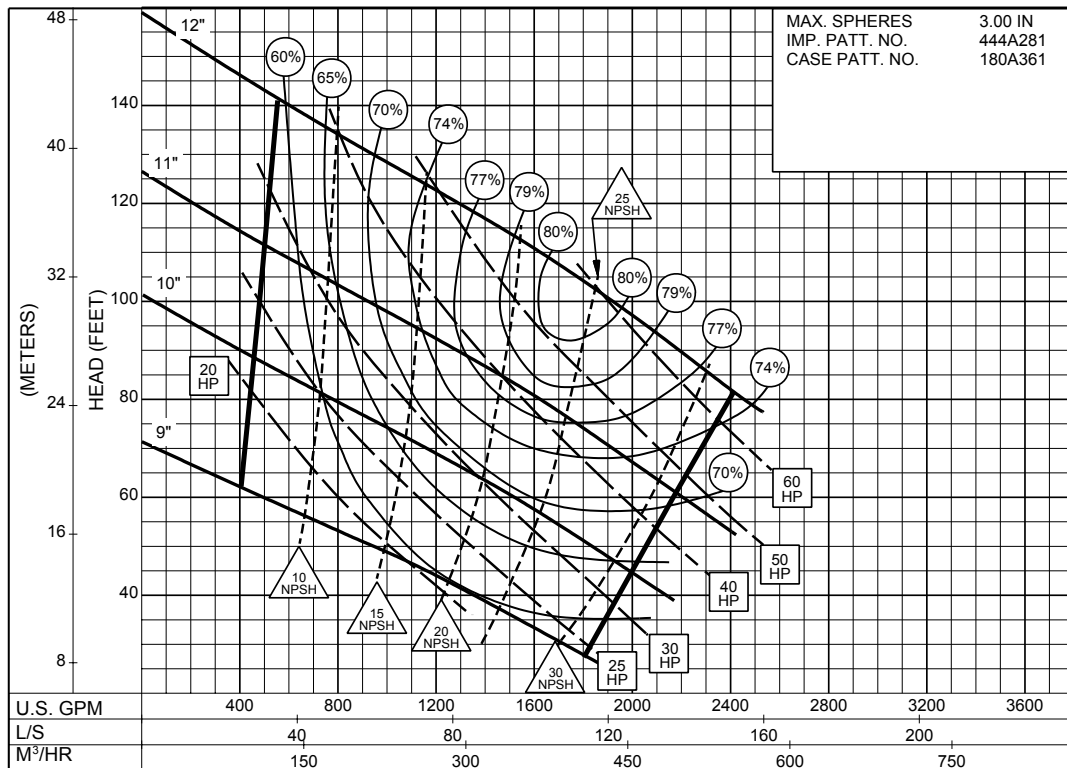
## ENCLOSED IMPELLER



**6 x 6 x 12B**  
**SERIES 610**

ENCLOSED IMPELLER

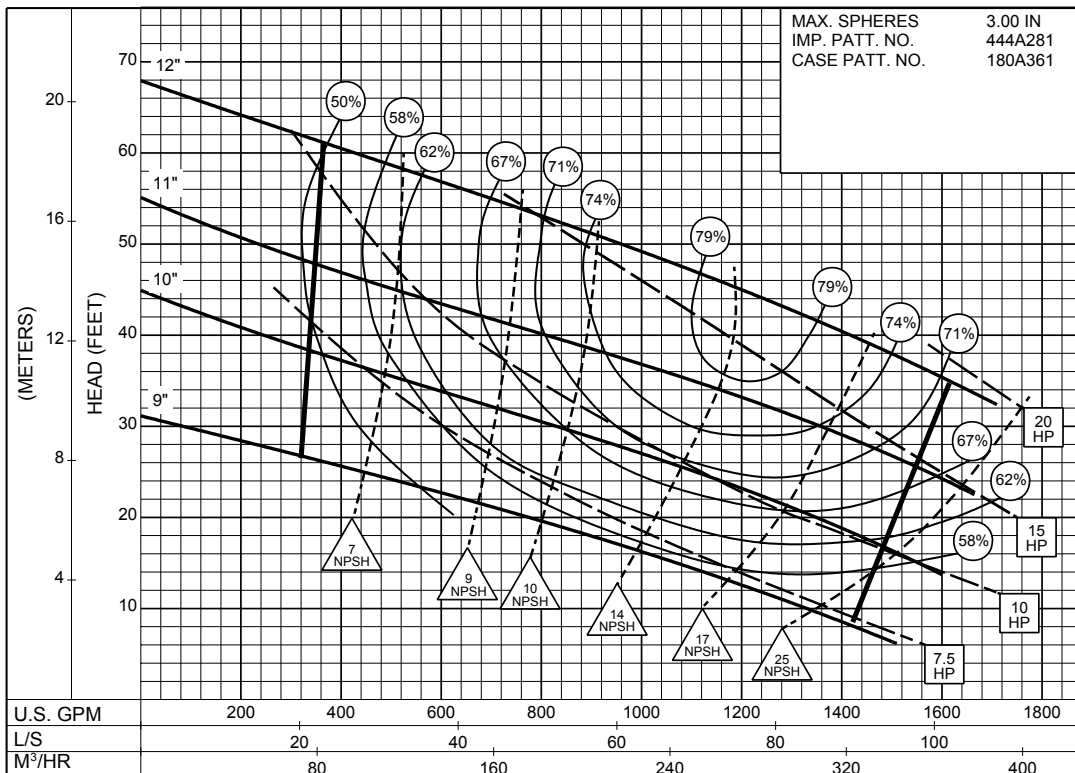
SIZE : 6x6x12B TYPE : 610 IMPELLER : Enclosed R. P. M. : 1750



8PC-144962

**1750**  
RPM

SIZE : 6x6x12B TYPE : 610 IMPELLER : Enclosed R. P. M. : 1150

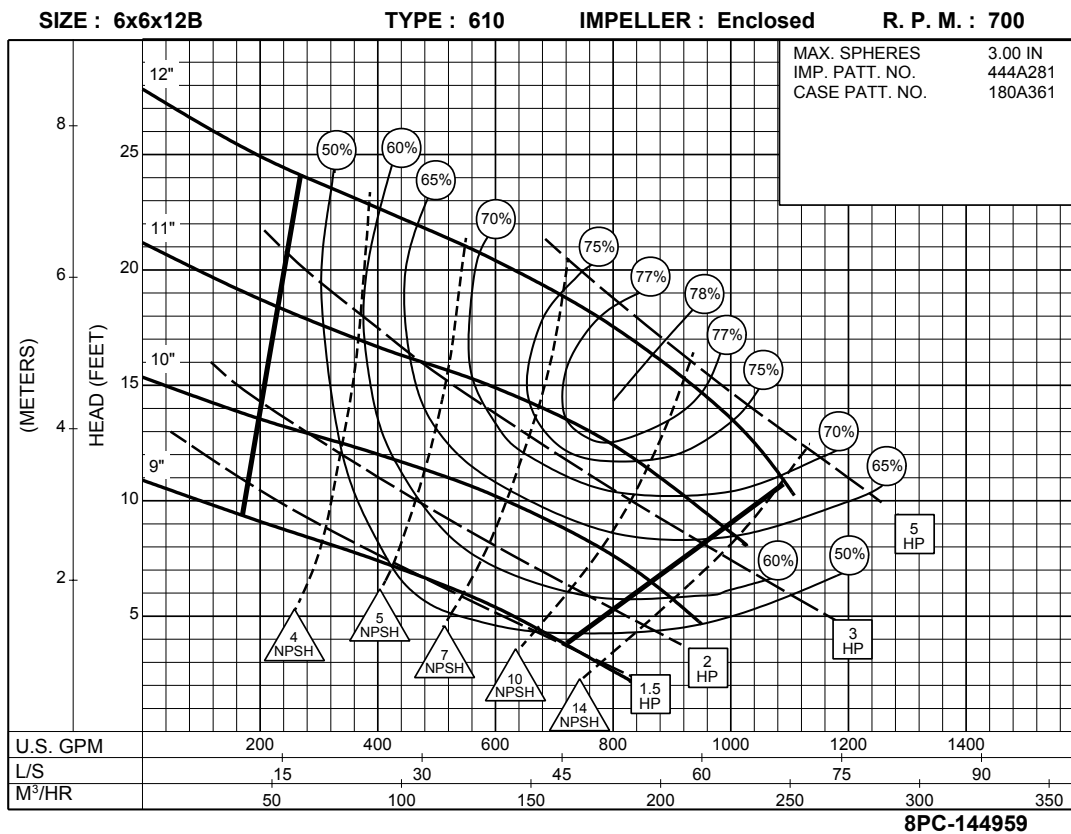
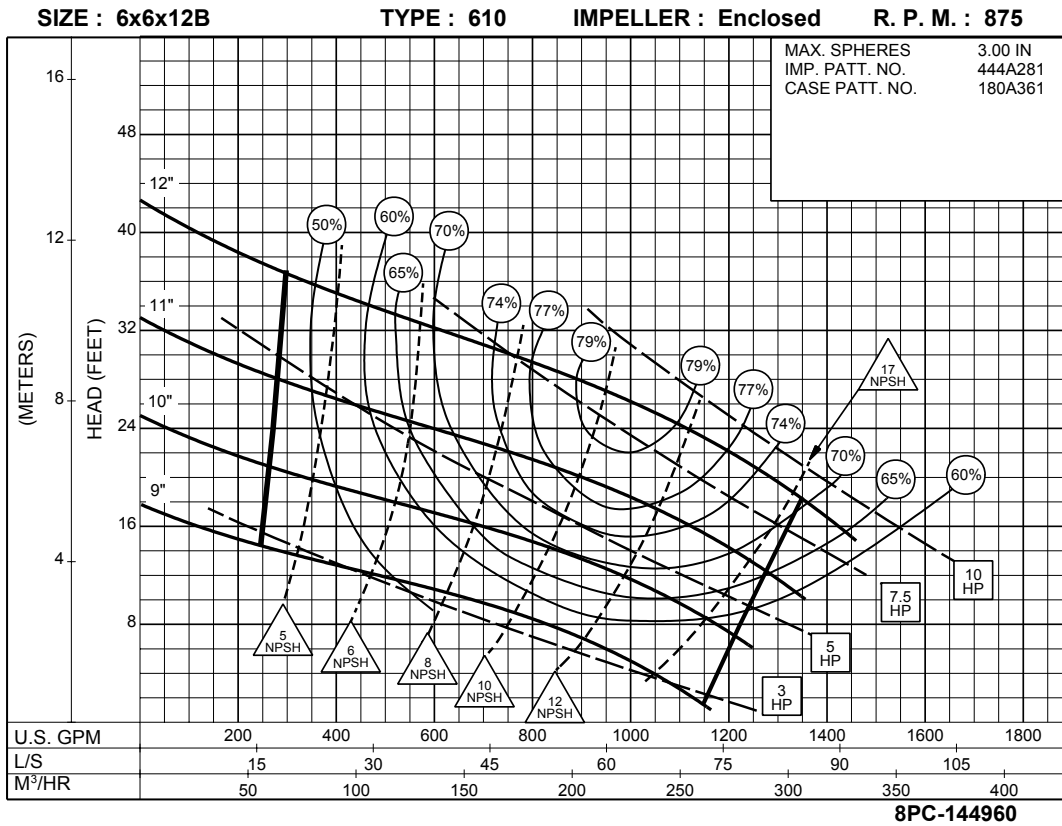


8PC-151595

**1150**  
RPM

# 6 x 6 x 12B SERIES 610

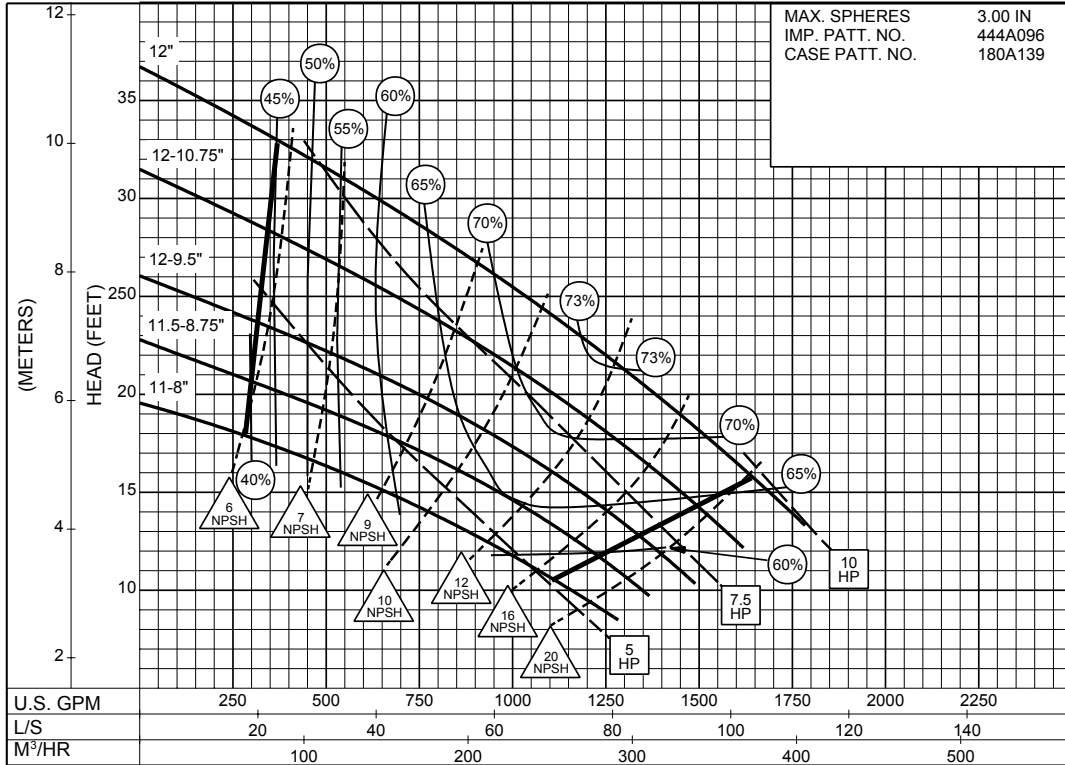
## ENCLOSED IMPELLER



**6 x 6 x 12**  
**SERIES 610**

ENCLOSED IMPELLER

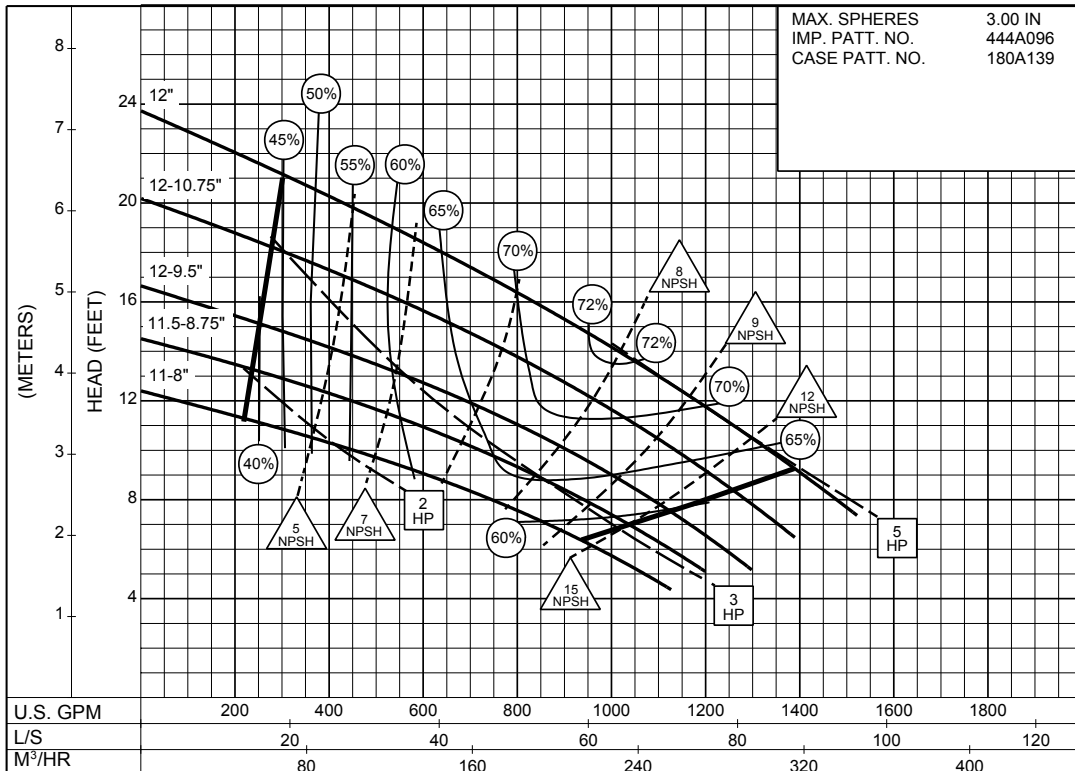
SIZE : 6x6x12 TYPE : 610 IMPELLER : Enclosed R. P. M. : 875



8PC-115573

**875**  
RPM

SIZE : 6x6x12 TYPE : 610 IMPELLER : Enclosed R. P. M. : 700



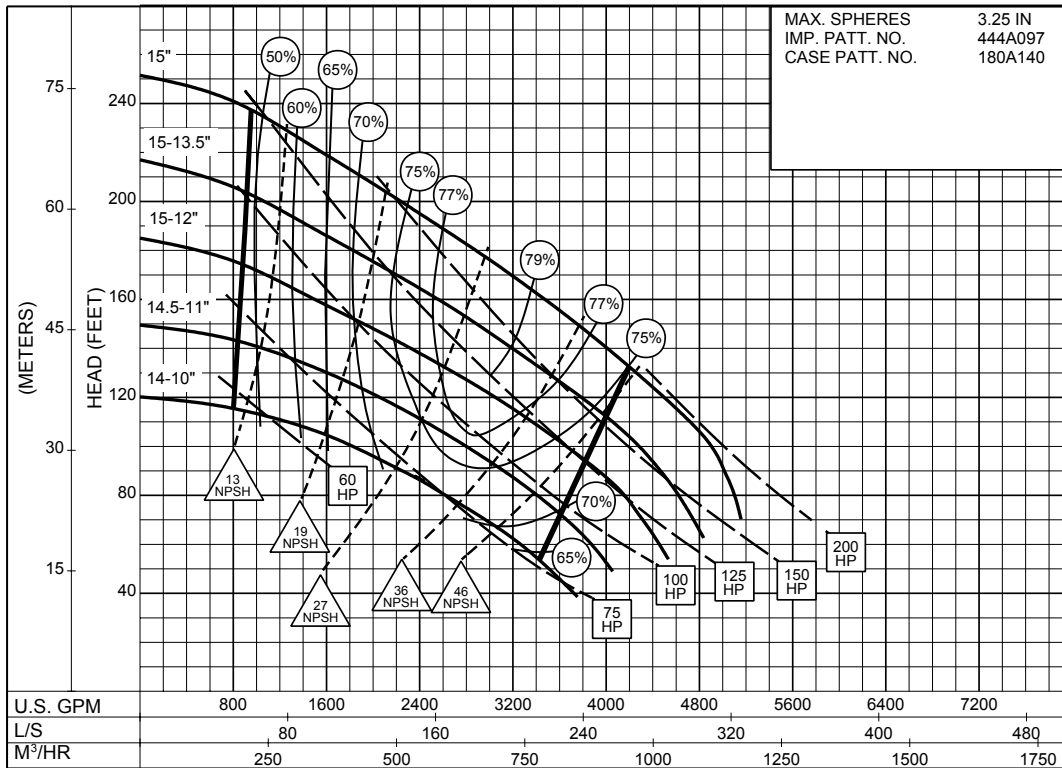
8PC-115574

**700**  
RPM

# 6 x 8 x 15 SERIES 610

ENCLOSED IMPELLER

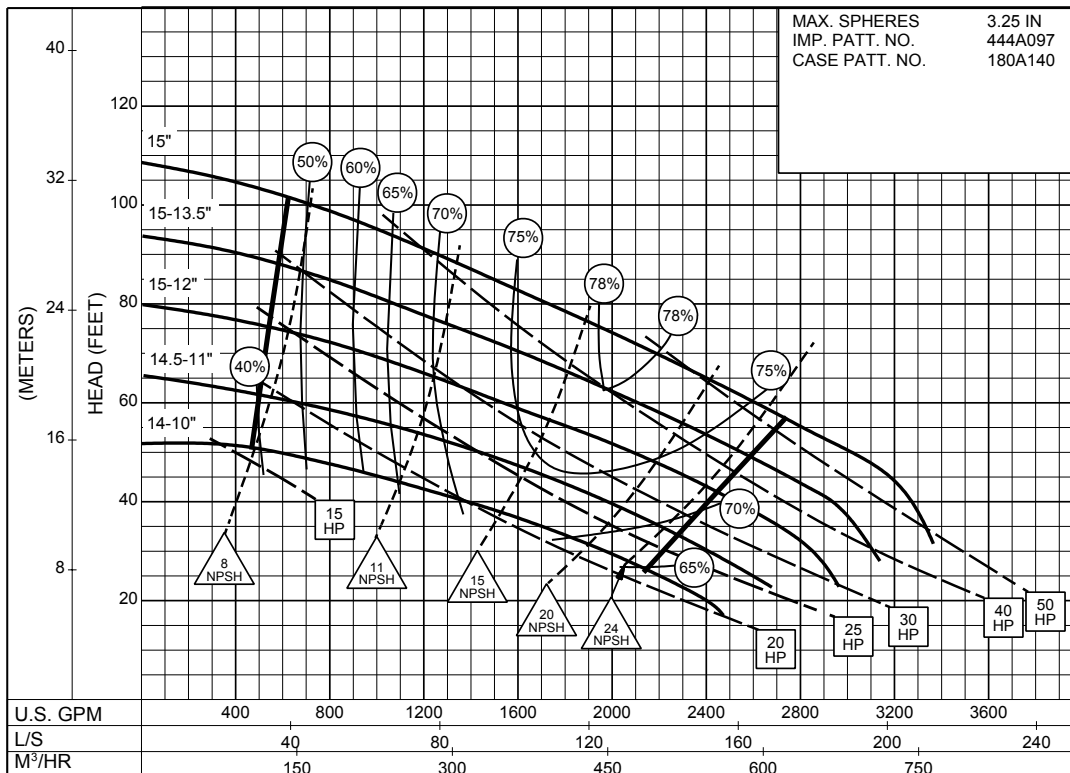
SIZE : 6x8x15 TYPE : 610 IMPELLER : Enclosed R. P. M. : 1750



8PC-115575

**1750**  
RPM

SIZE : 6x8x15 TYPE : 610 IMPELLER : Enclosed R. P. M. : 1150



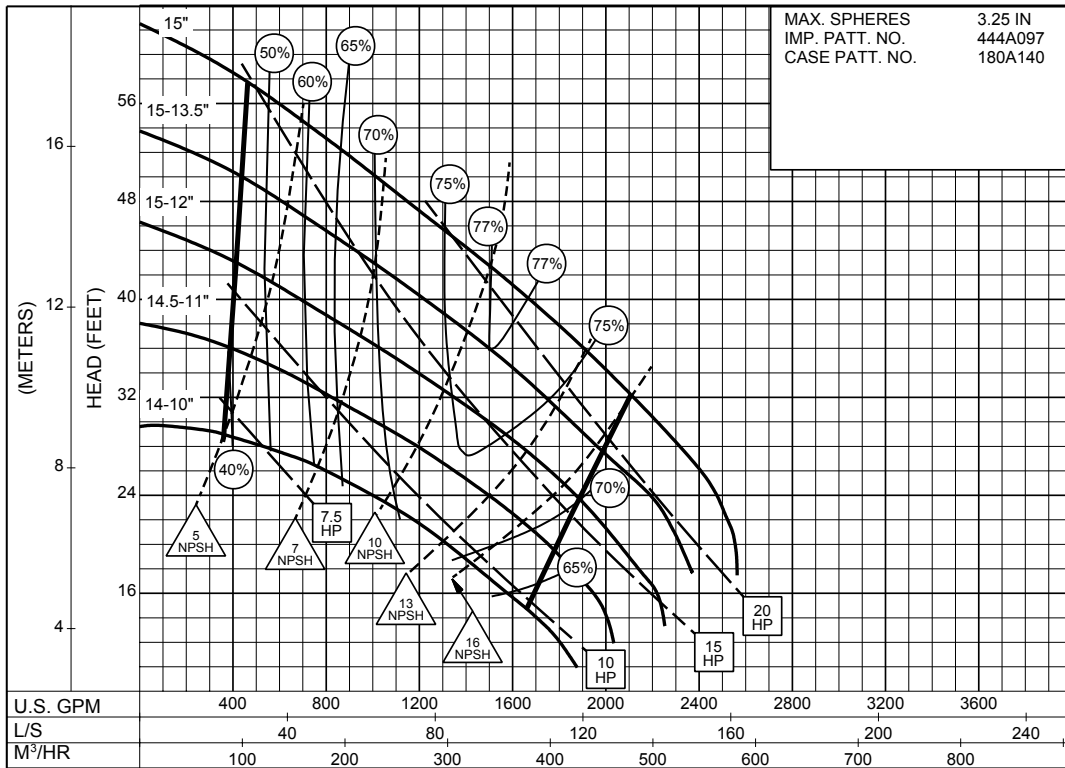
8PC-115576

**1150**  
RPM

# 6 x 8 x 15 SERIES 610

## ENCLOSED IMPELLER

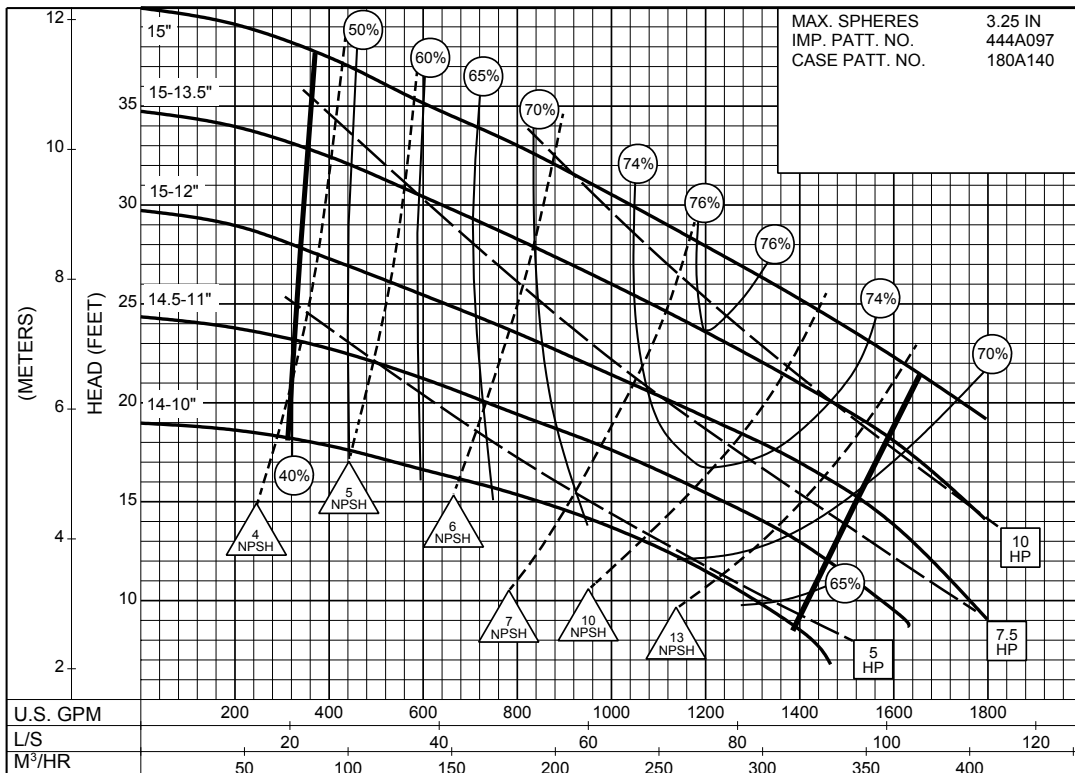
SIZE : 6x8x15      TYPE : 610      IMPELLER : Enclosed      R. P. M. : 875



8PC-115577

**875**  
RPM

SIZE : 6x8x15      TYPE : 610      IMPELLER : Enclosed      R. P. M. : 700



8PC-115578

**700**  
RPM

# 6 x 8 x 15 SERIES 610

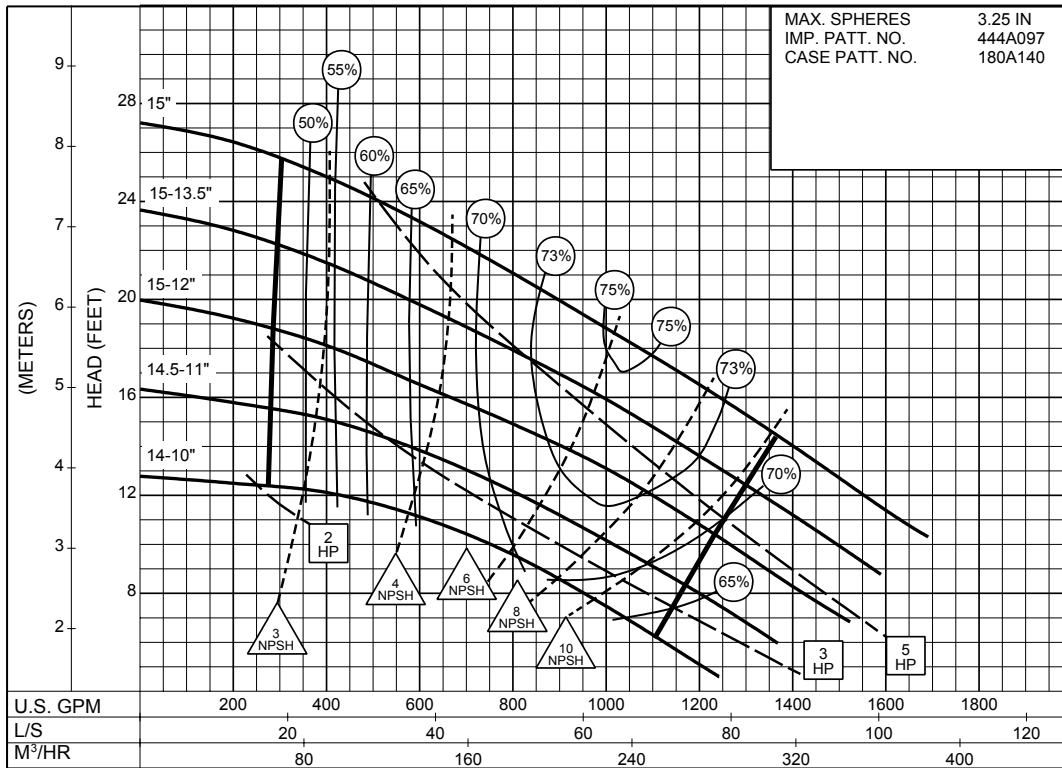
ENCLOSED IMPELLER

SIZE : 6x8x15

TYPE : 610

IMPELLER : Enclosed

R. P. M. : 580



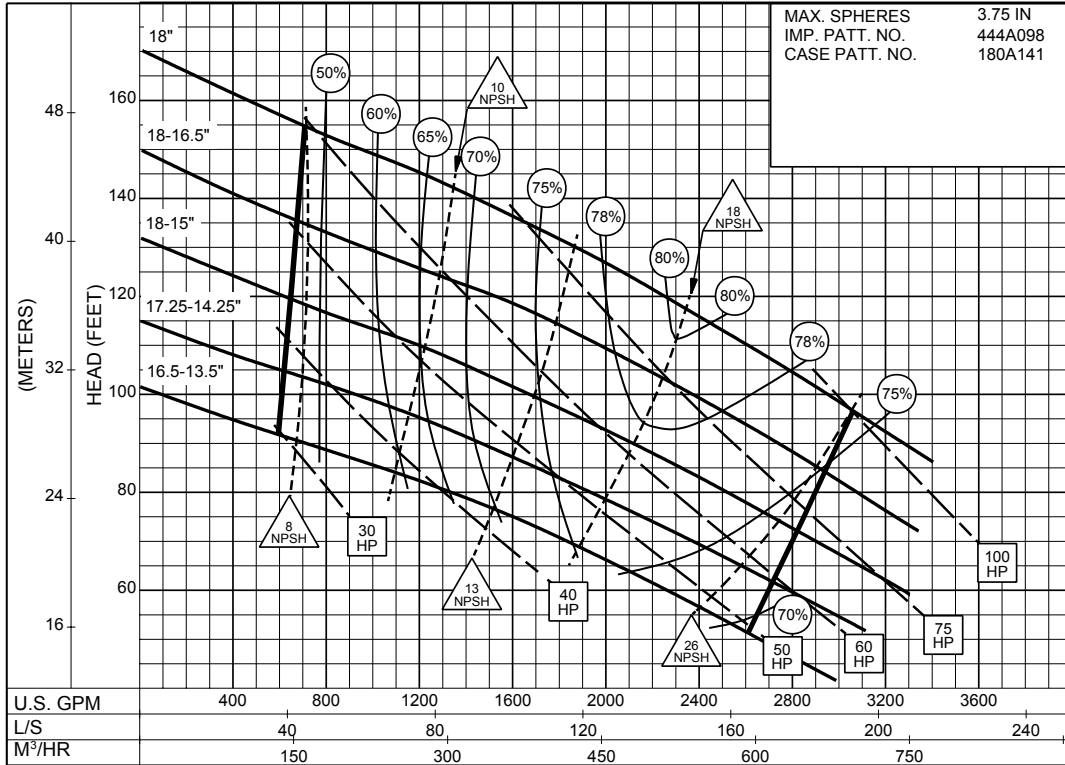
**580**  
RPM

8PC-115579

**6 x 8 x 18**  
**SERIES 610**

ENCLOSED IMPELLER

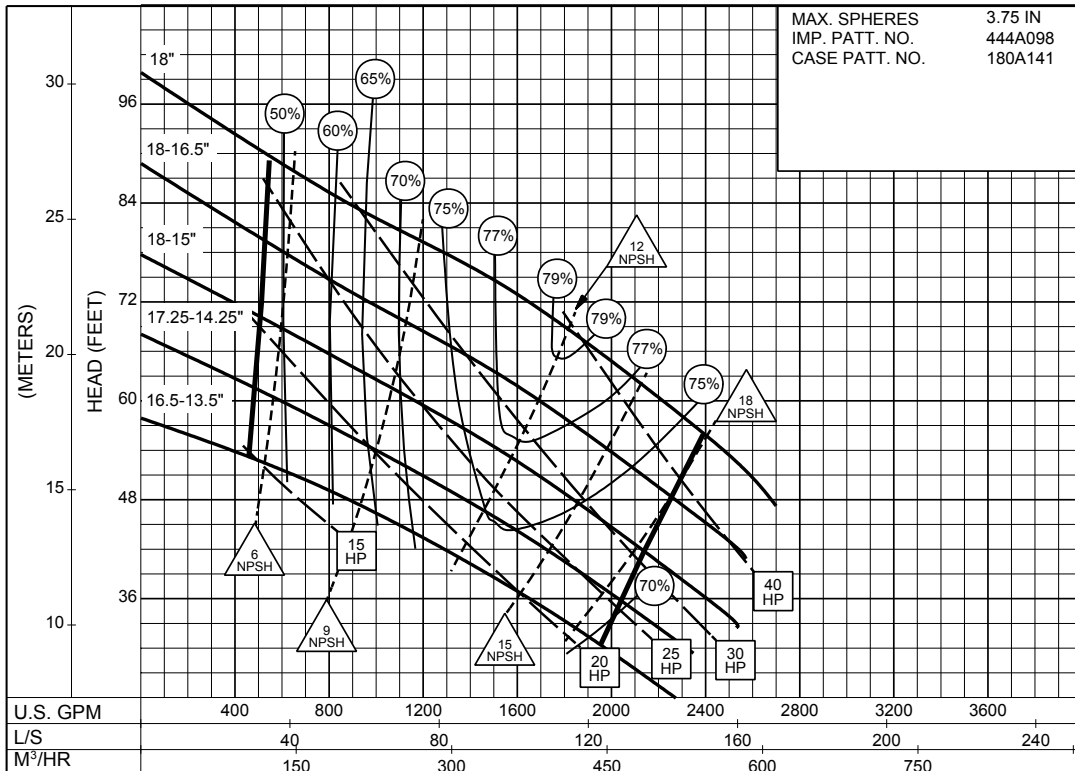
SIZE : 6x8x18 TYPE : 610 IMPELLER : Enclosed R. P. M. : 1150



**1150**  
RPM

8PC-115580

SIZE : 6x8x18 TYPE : 610 IMPELLER : Enclosed R. P. M. : 875



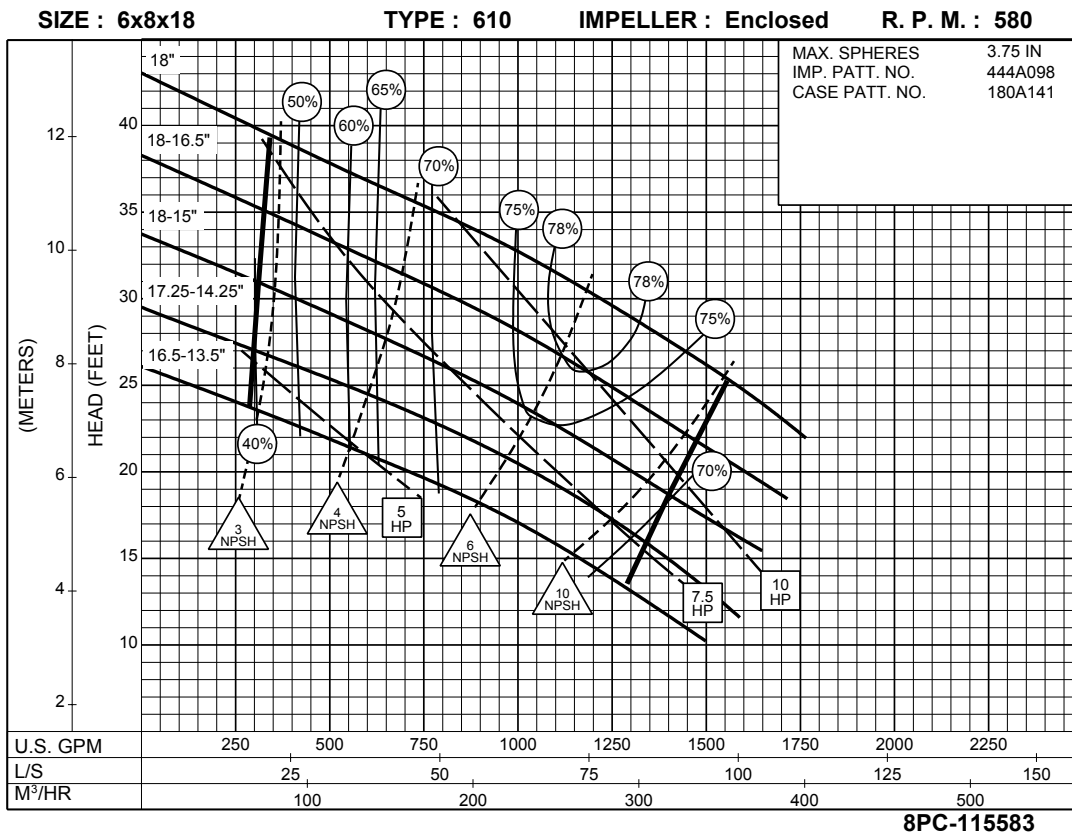
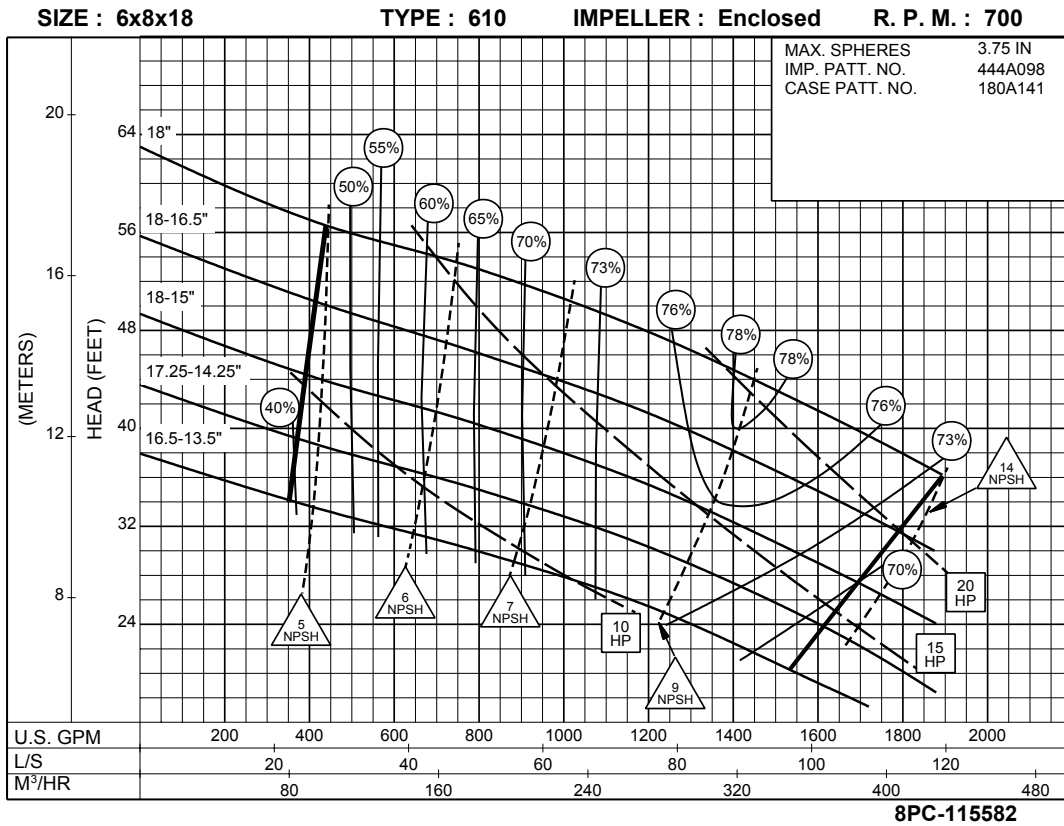
**875**  
RPM

8PC-115581



# 6 x 8 x 18 SERIES 610

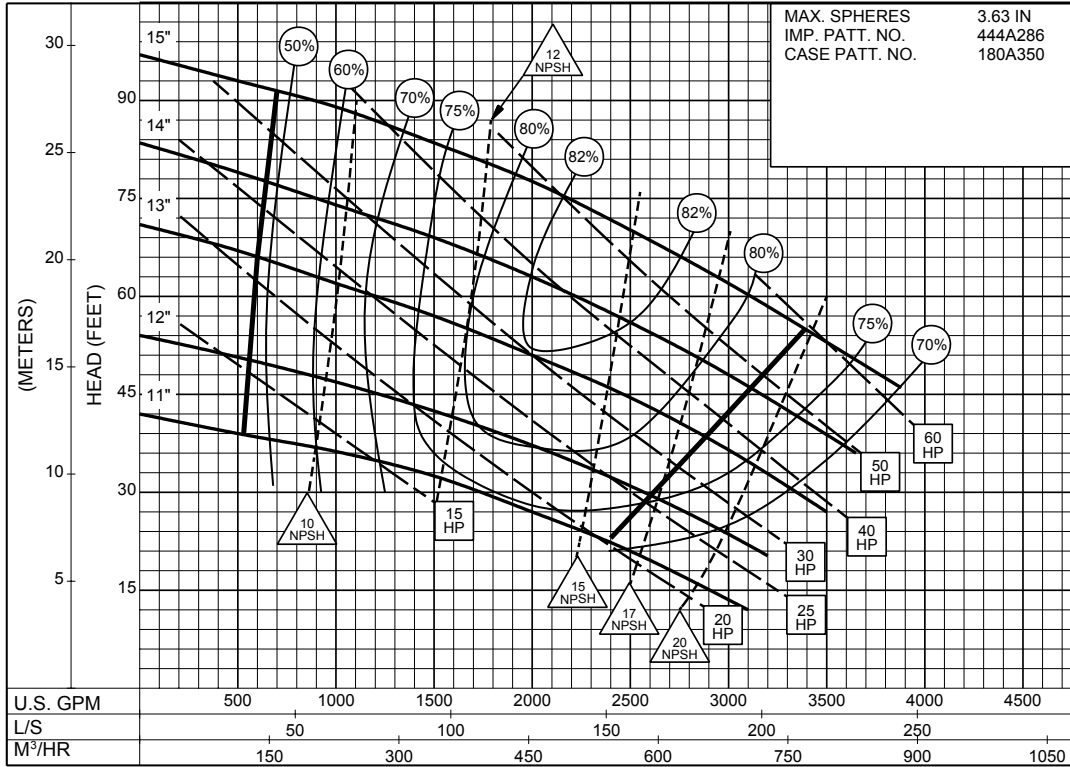
## ENCLOSED IMPELLER



# 8 x 8 x 15A SERIES 610

## ENCLOSED IMPELLER

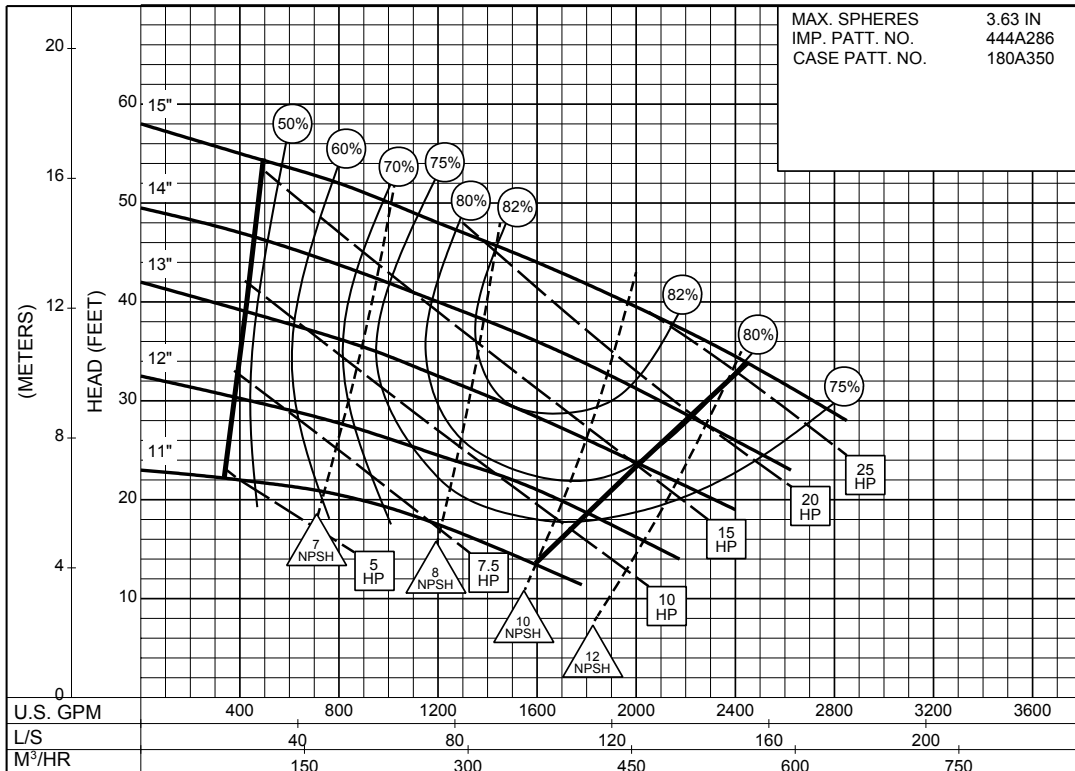
SIZE : 8x8x15A      TYPE : 610      IMPELLER : Enclosed      R. P. M. : 1150



8PC-142576

**1150**  
RPM

SIZE : 8x8x15A      TYPE : 610      IMPELLER : Enclosed      R. P. M. : 875

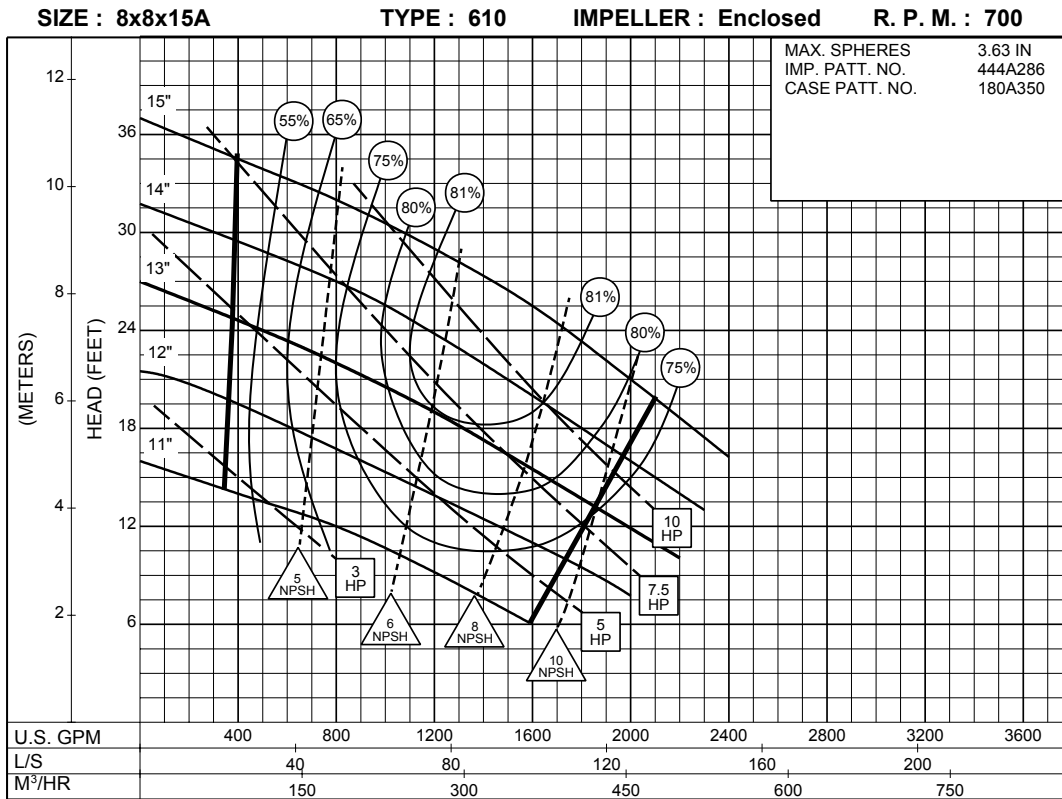


8PC-142577

**875**  
RPM

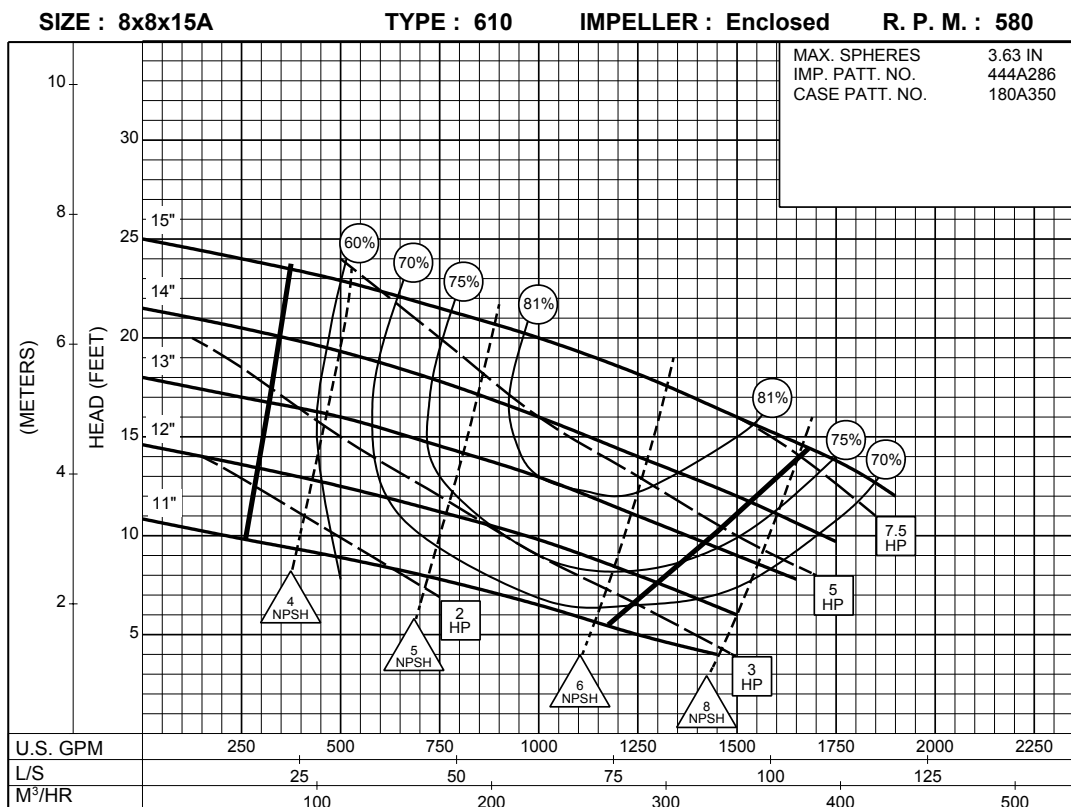
# 8 x 8 x 15A SERIES 610

## ENCLOSED IMPELLER



8PC-142578

**700  
RPM**



8PC-142579

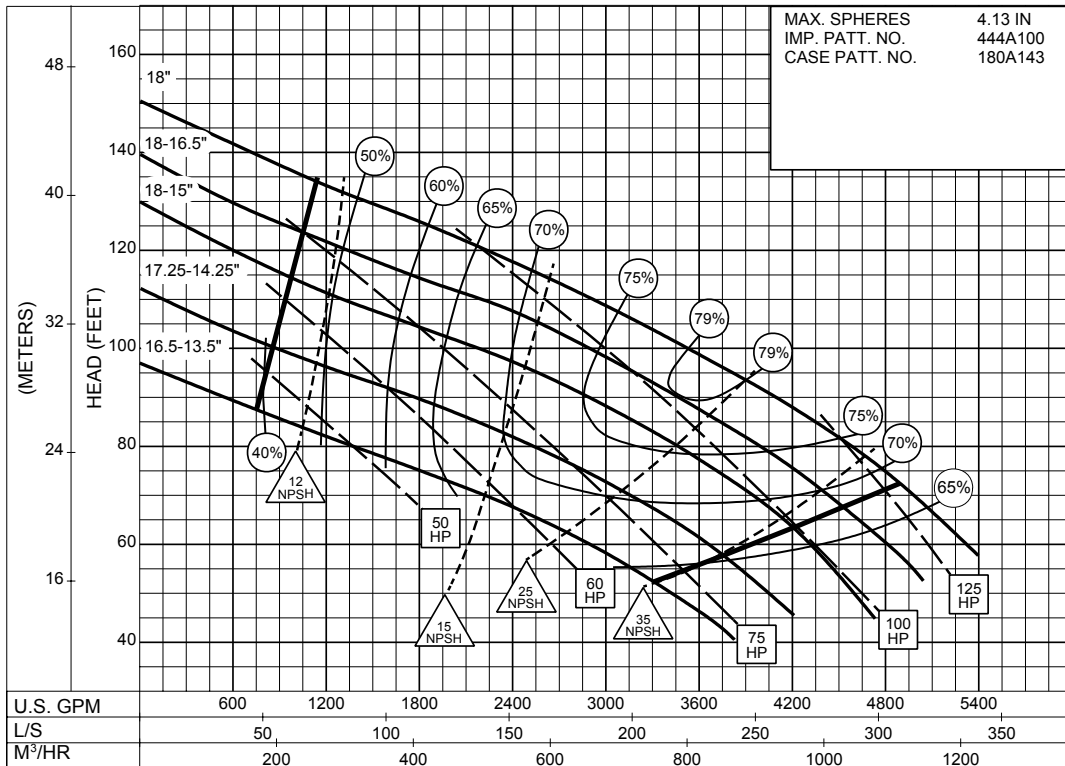
**580  
RPM**

SIZE : 8x10x18

TYPE : 610

IMPELLER : Enclosed

R. P. M. : 1150



8PC-115588

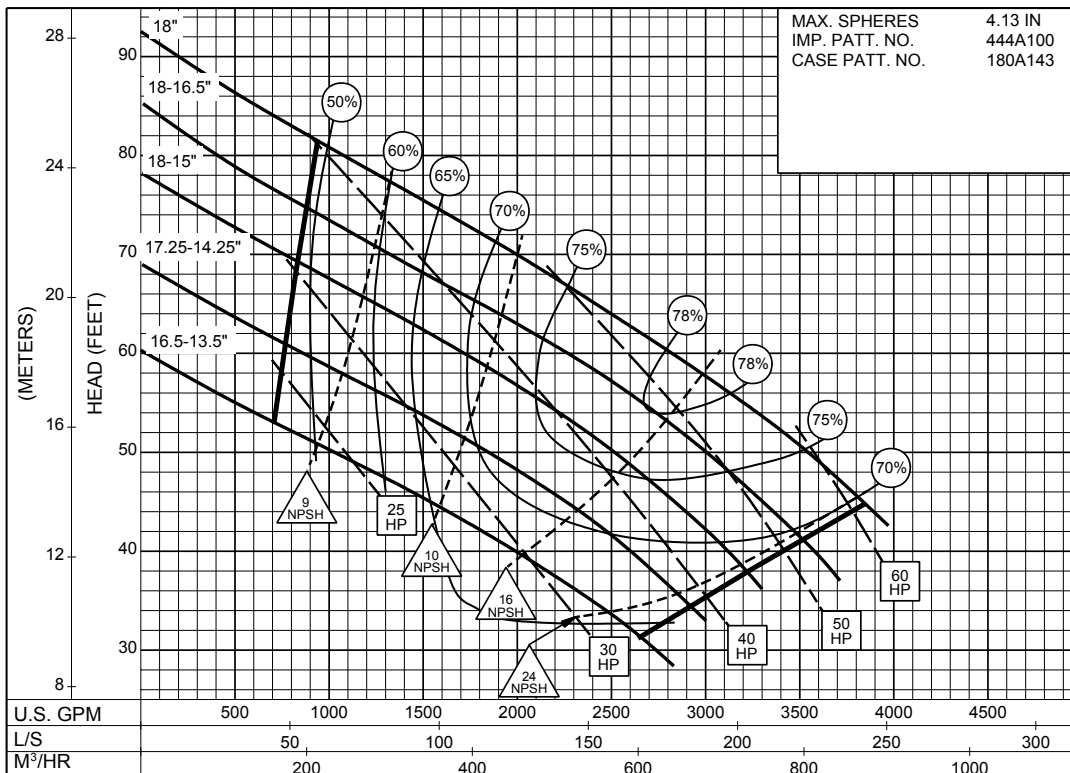
**1150**  
RPM

SIZE : 8x10x18

TYPE : 610

IMPELLER : Enclosed

R. P. M. : 875

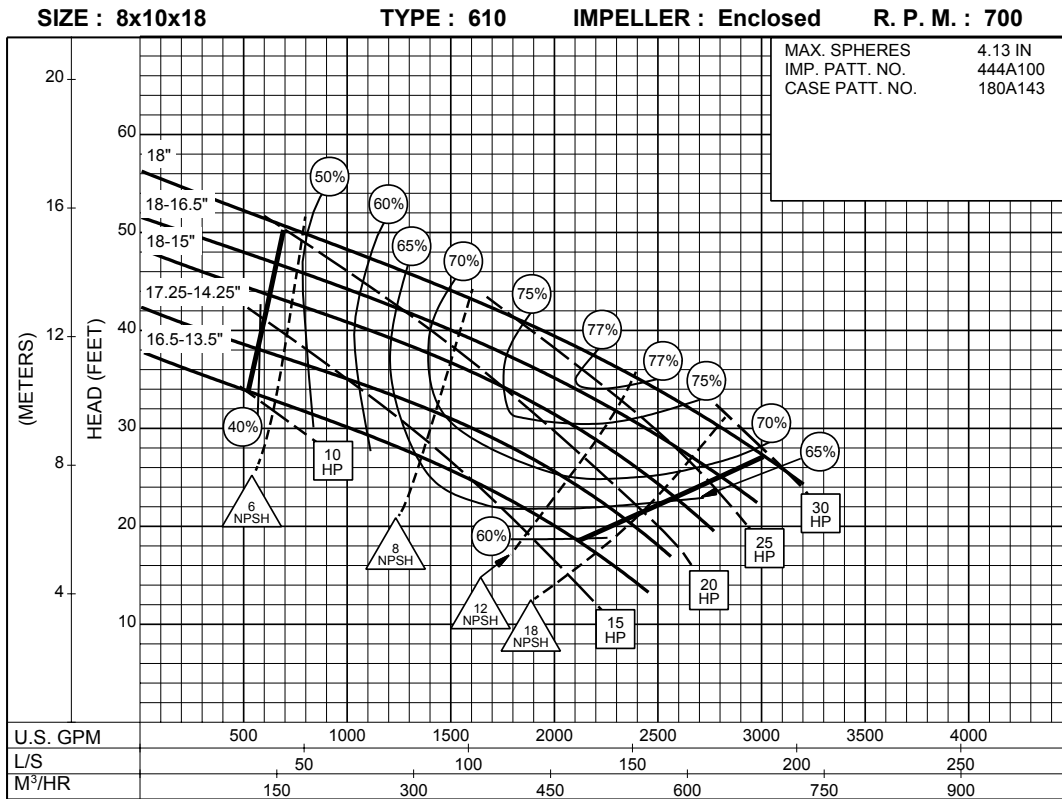


8PC-115589

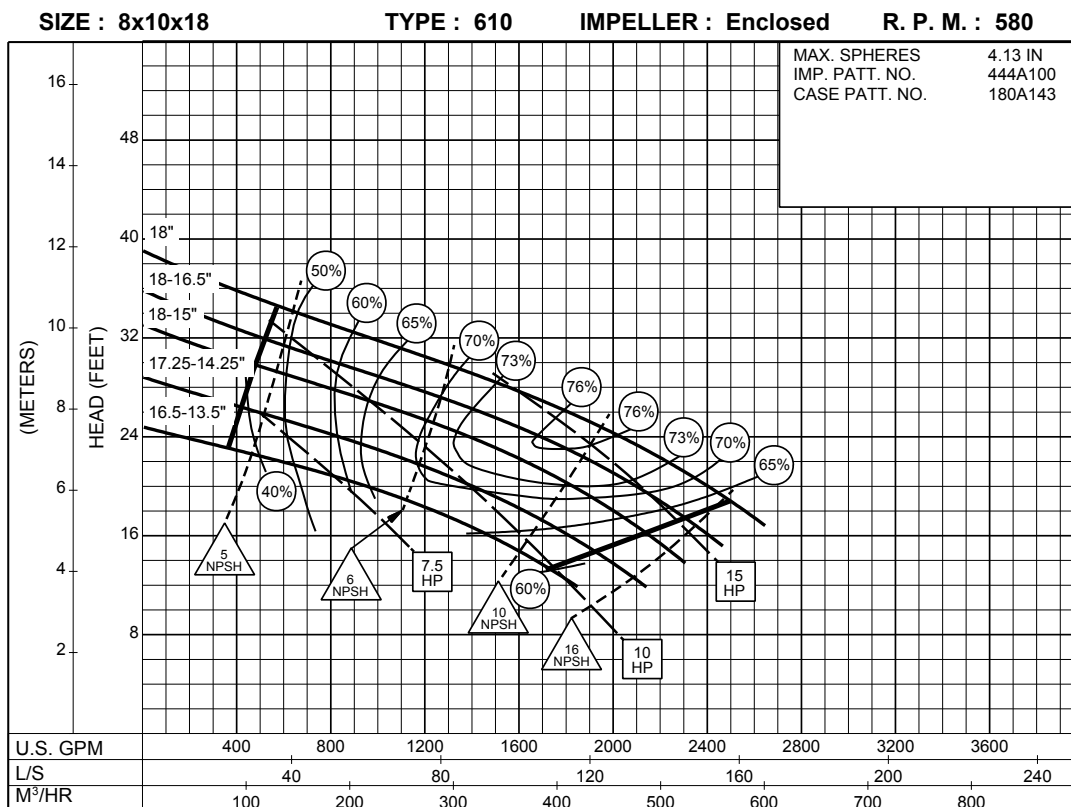
**875**  
RPM

# 8 x 10 x 18 SERIES 610

## ENCLOSED IMPELLER



8PC-115590

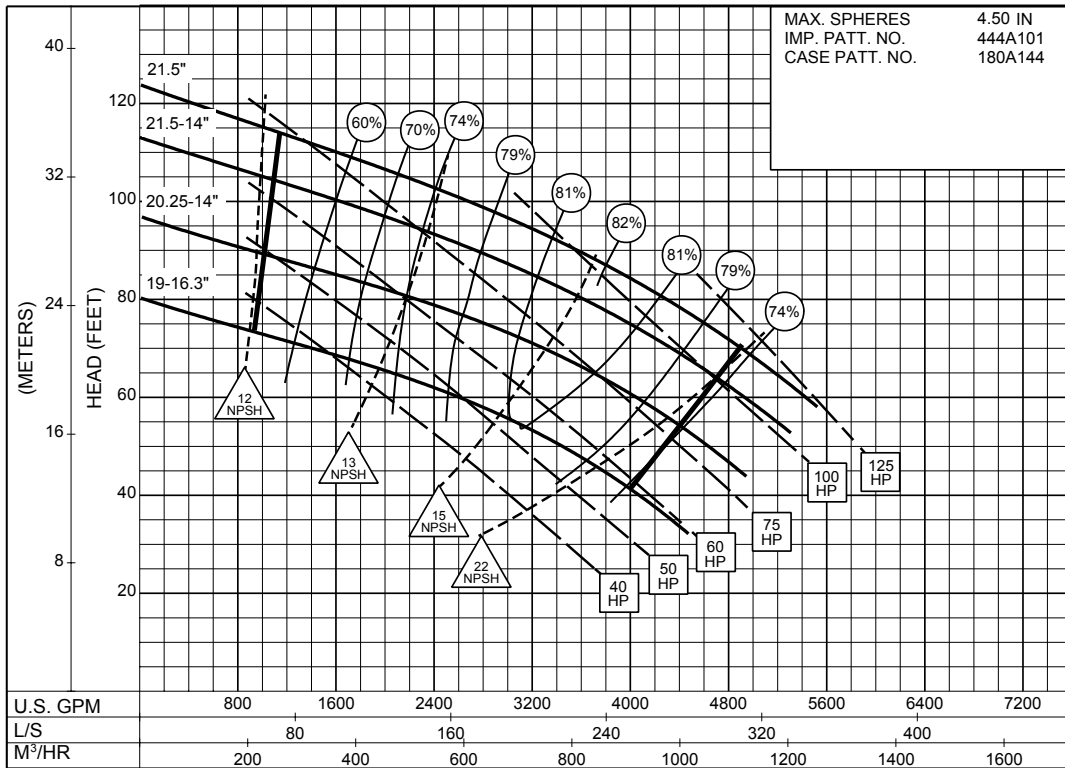


8PC-115591

**8 x 10 x 22**  
**SERIES 610**

ENCLOSED IMPELLER

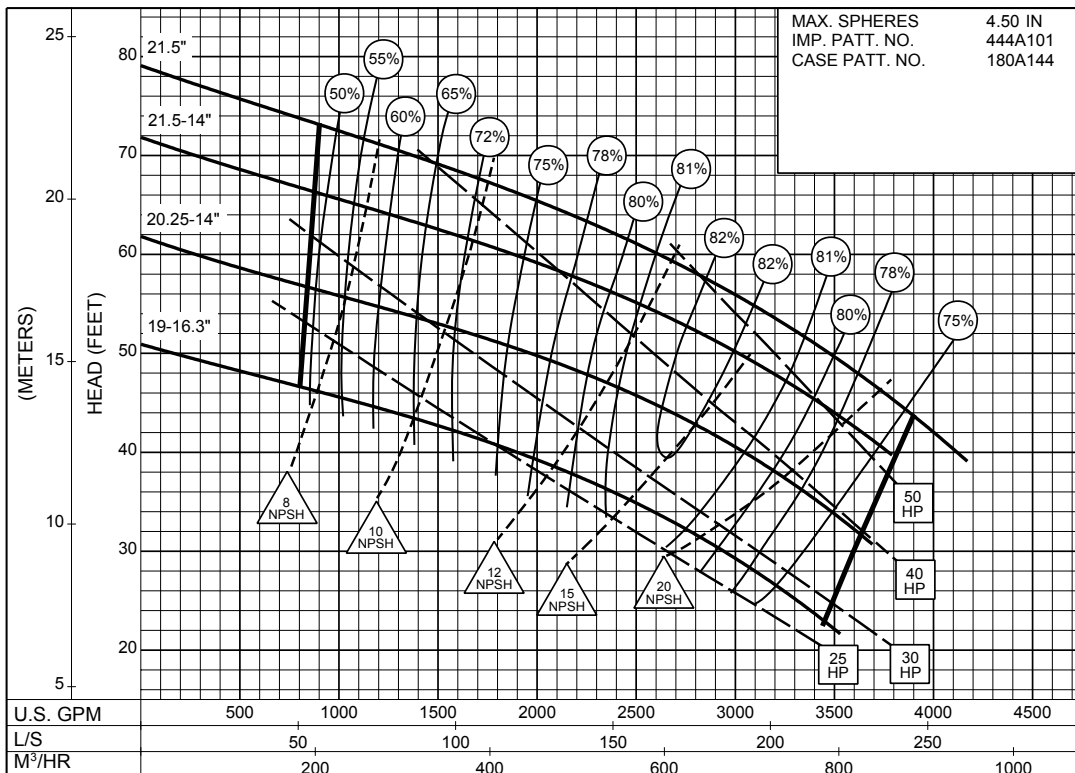
SIZE : 8x10x22 TYPE : 610 IMPELLER : Enclosed R. P. M. : 875



8PC-115592B

**875**  
RPM

SIZE : 8x10x22 TYPE : 610 IMPELLER : Enclosed R. P. M. : 700

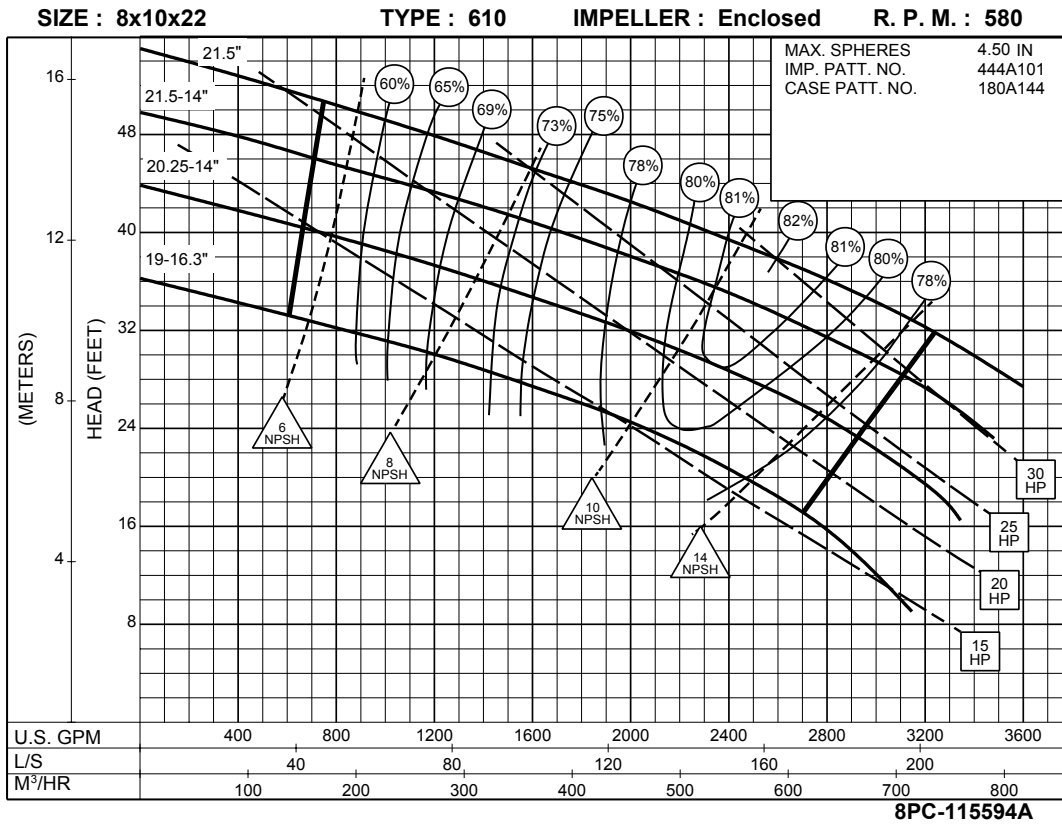


8PC-115593A

**700**  
RPM

# 8 x 10 x 22 SERIES 610

ENCLOSED IMPELLER

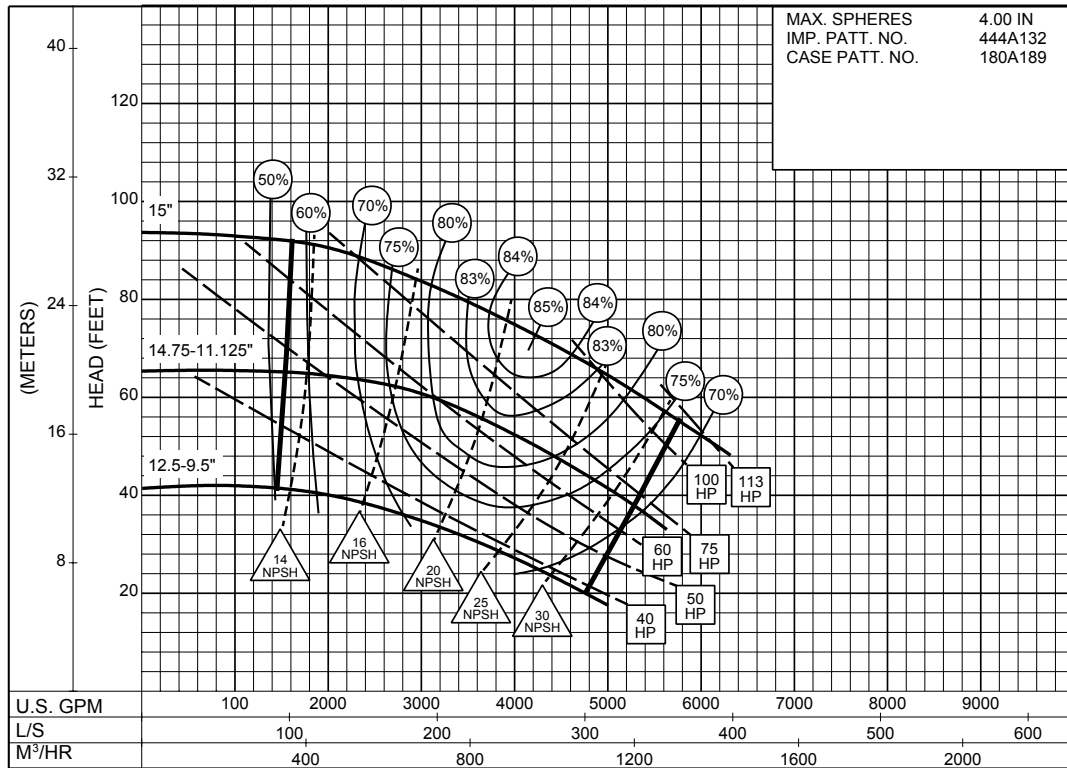


SIZE : 10x10x15

TYPE : 610

IMPELLER : Enclosed

R. P. M. : 1150



**1150**  
RPM

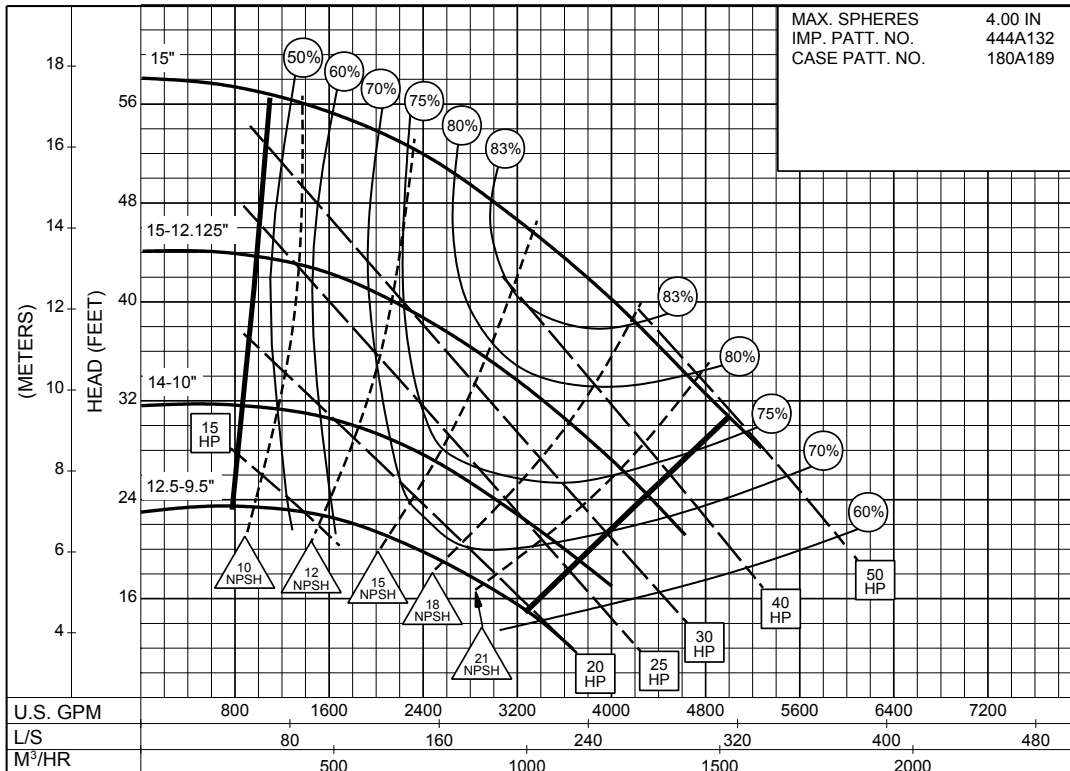
8PC-126742

SIZE : 10x10x15

TYPE : 610

IMPELLER : Enclosed

R. P. M. : 875



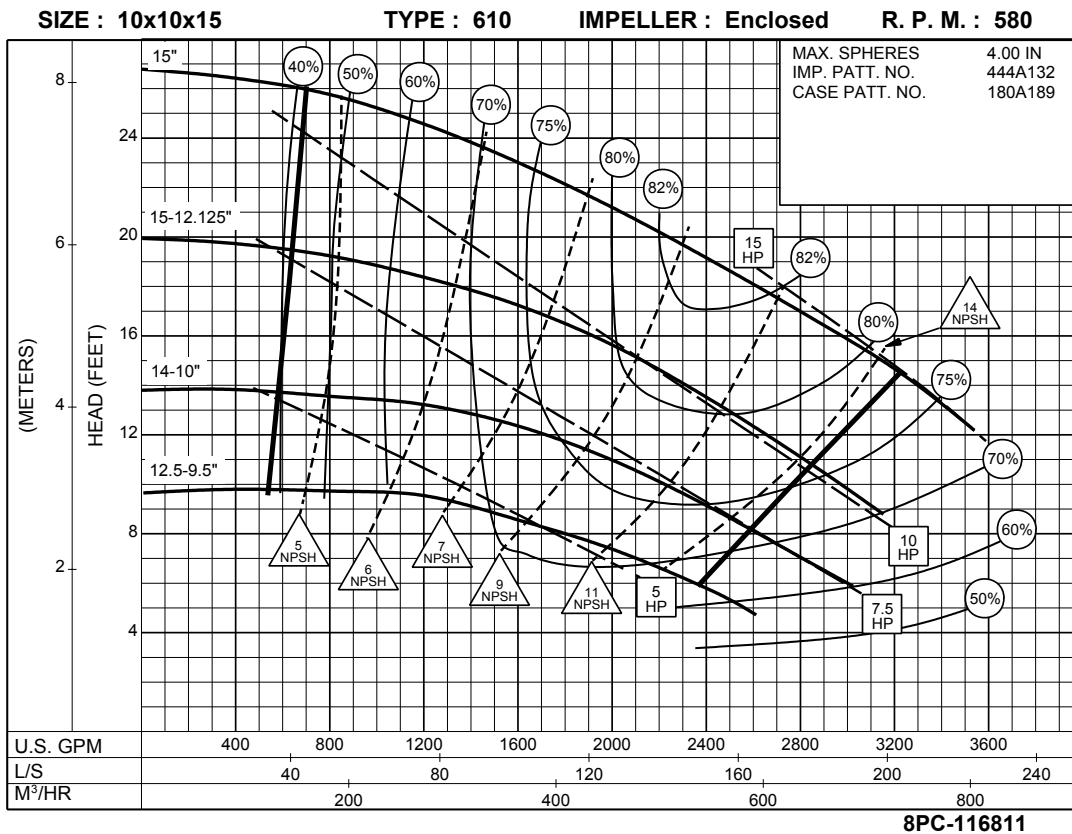
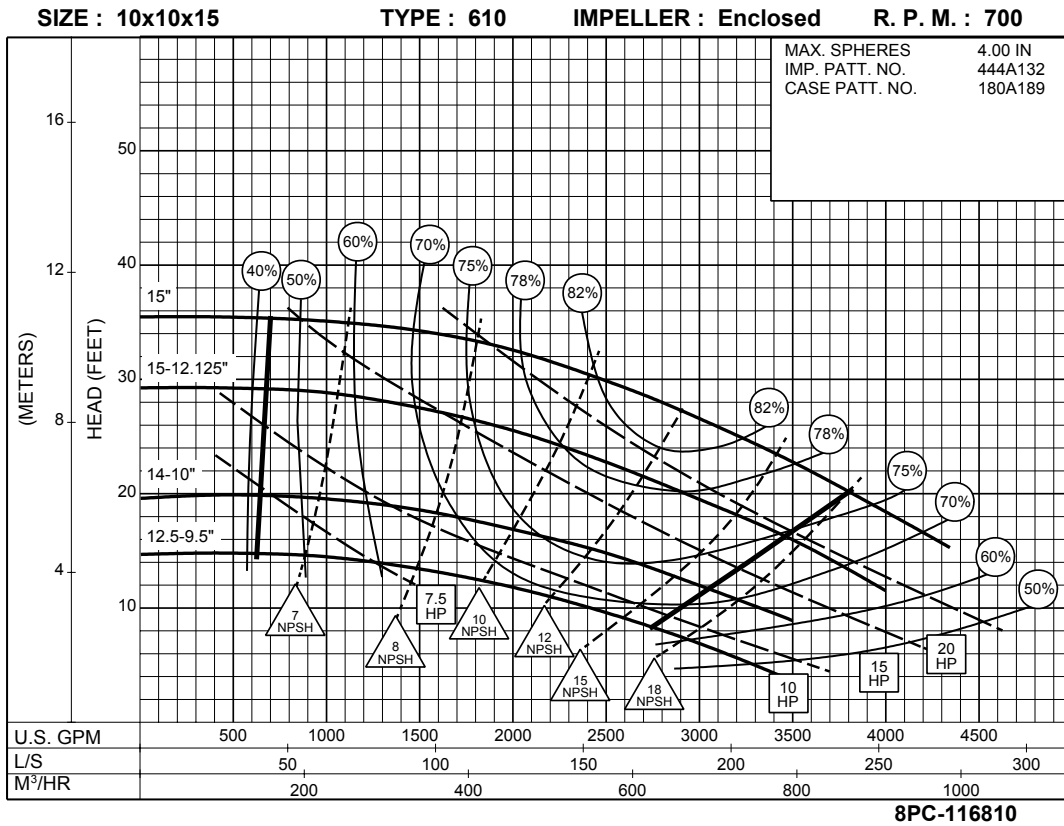
**875**  
RPM

8PC-116809



# 10 x 10 x 15 SERIES 610

ENCLOSED IMPELLER



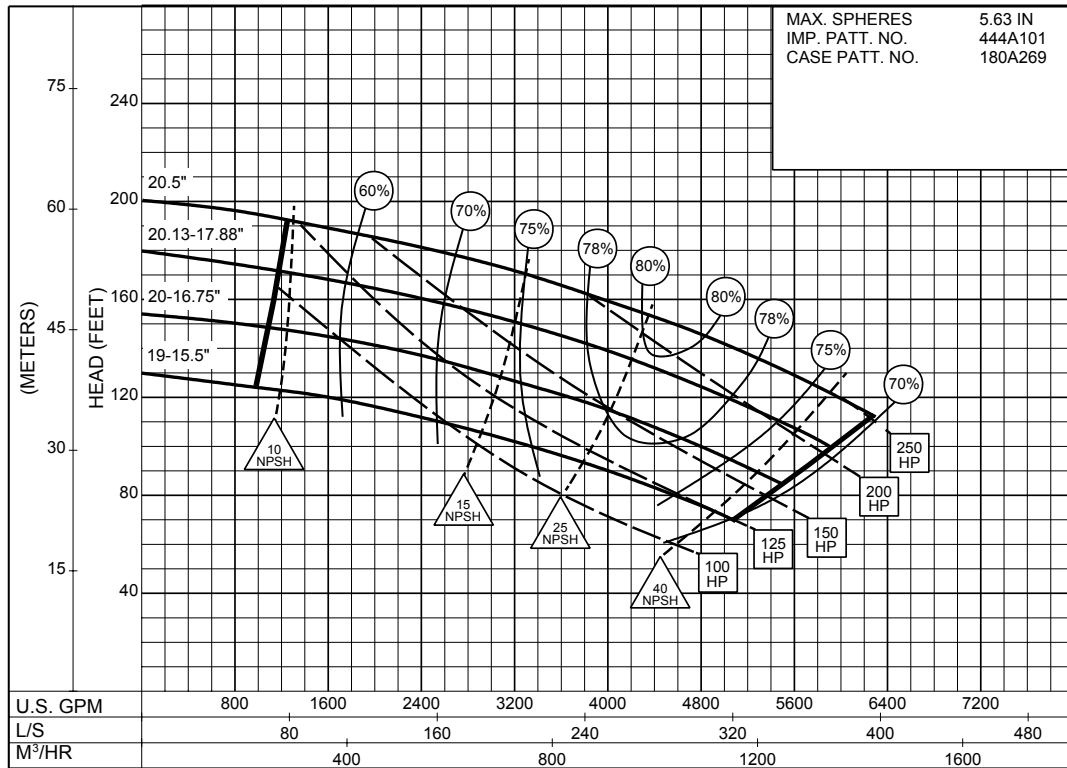
# 10 x 10 x 22 SERIES 610

## ENCLOSED IMPELLER

SIZE : 10x10x22      TYPE : 610      IMPELLER : Enclosed      R. P. M. : 1175

MAX. SPHERES      5.63 IN  
IMP. PATT. NO.      444A101  
CASE PATT. NO.      180A269

**1175**  
RPM

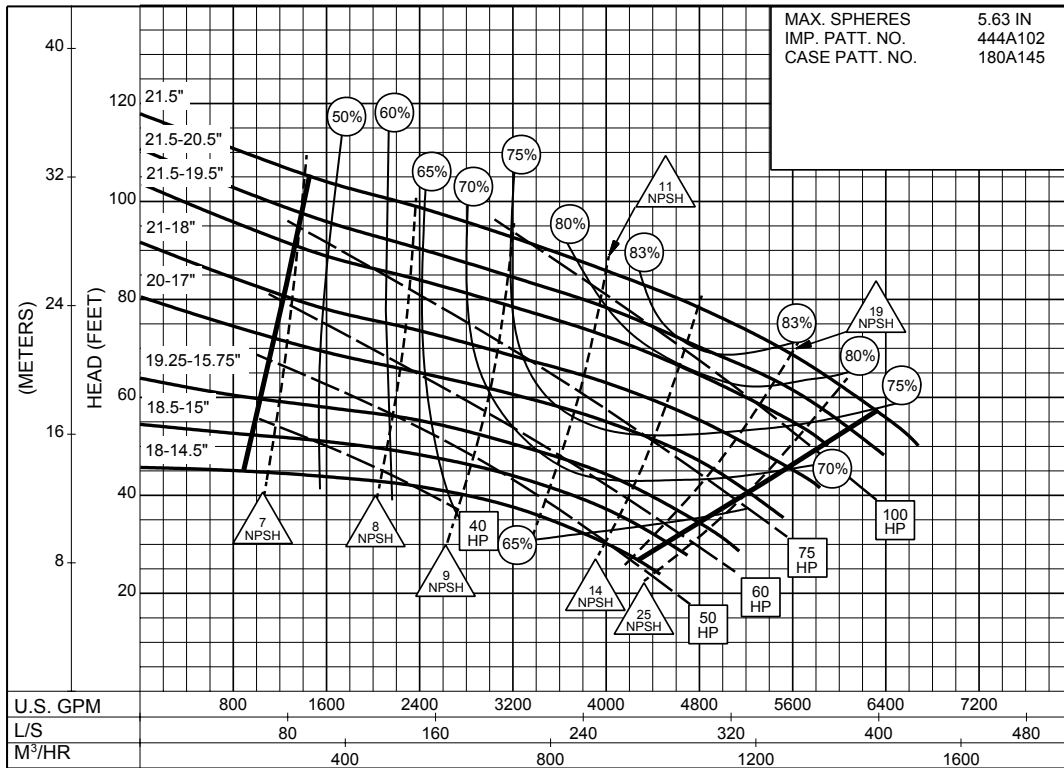


8PC-134351

**10 x 12 x 22  
SERIES 610**

**ENCLOSED IMPELLER**

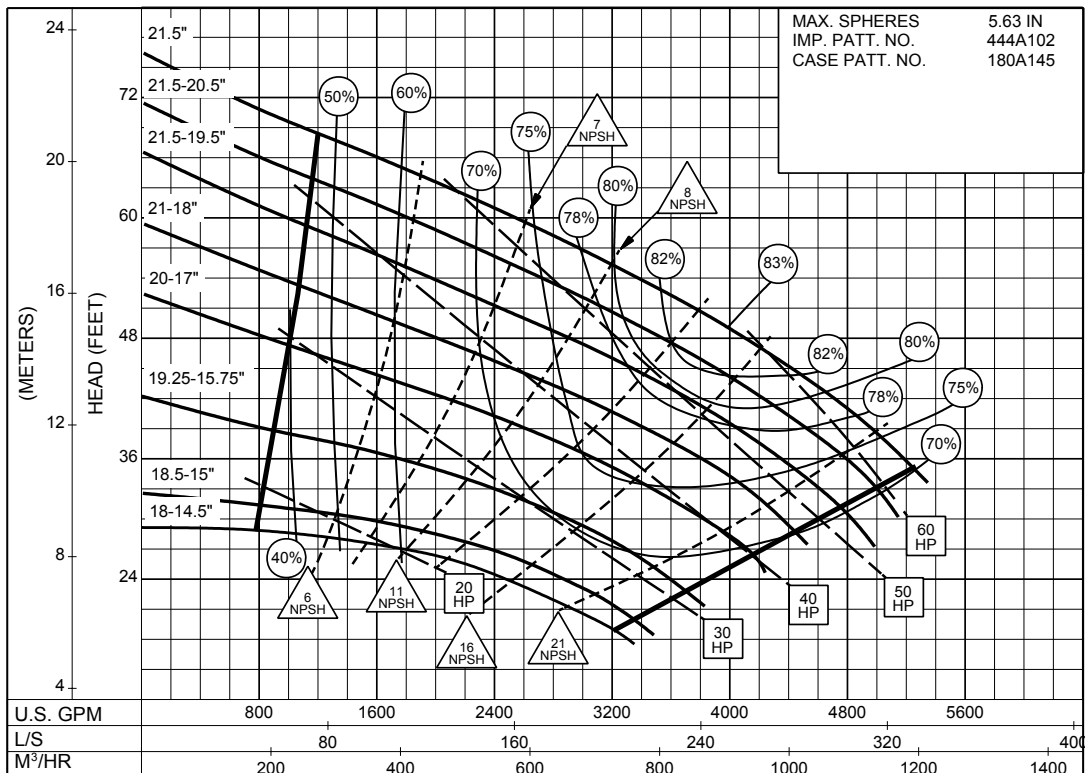
**SIZE : 10x12x22      TYPE : 610      IMPELLER : Enclosed      R. P. M. : 875**



**8PC-115595**

**875  
RPM**

**SIZE : 10x12x22      TYPE : 610      IMPELLER : Enclosed      R. P. M. : 700**



**8PC-115596**

**700  
RPM**

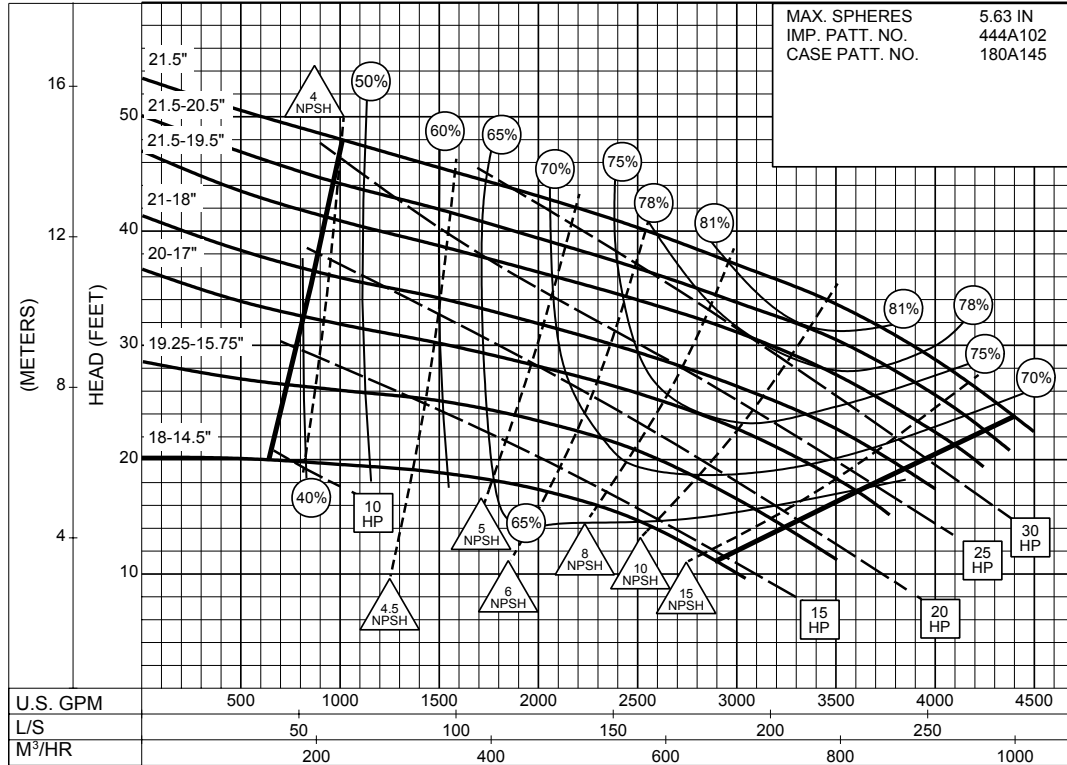
SIZE : 10x12x22

TYPE : 610

IMPELLER : Enclosed

R. P. M. : 580

MAX. SPHERES 5.63 IN  
IMP. PATT. NO. 444A102  
CASE PATT. NO. 180A145



**580**  
RPM

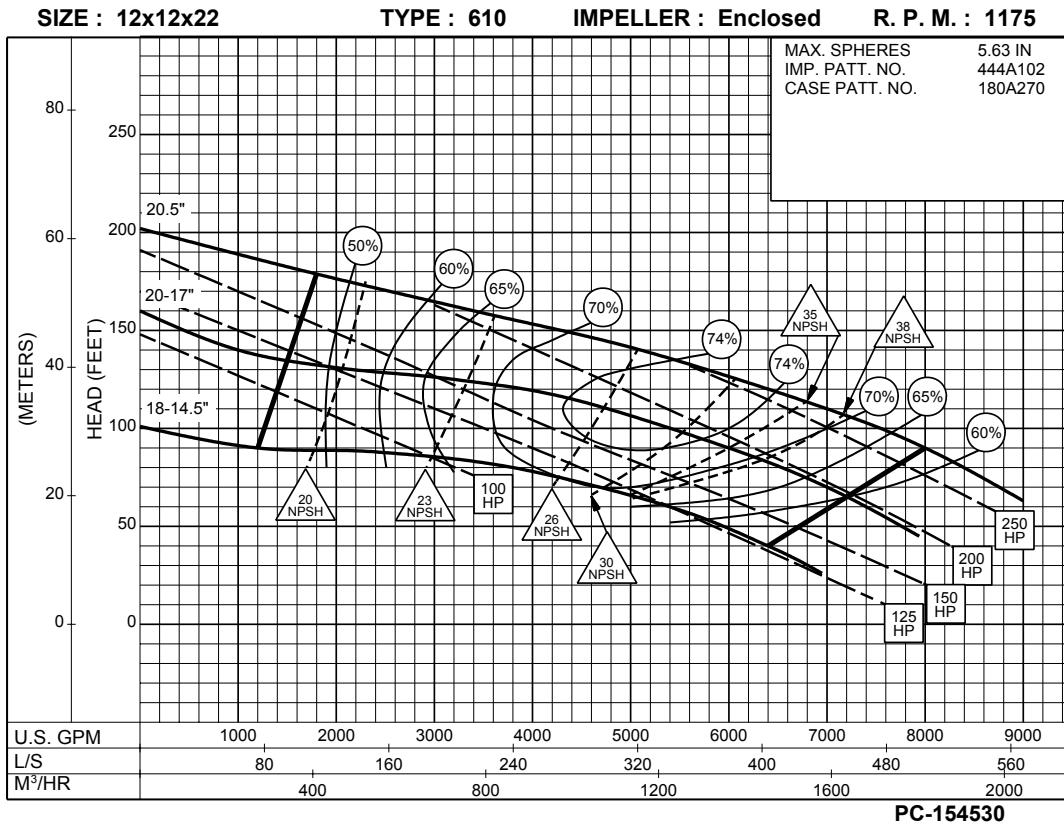
8PC-115597

# 12 x 12 x 22 SERIES 610

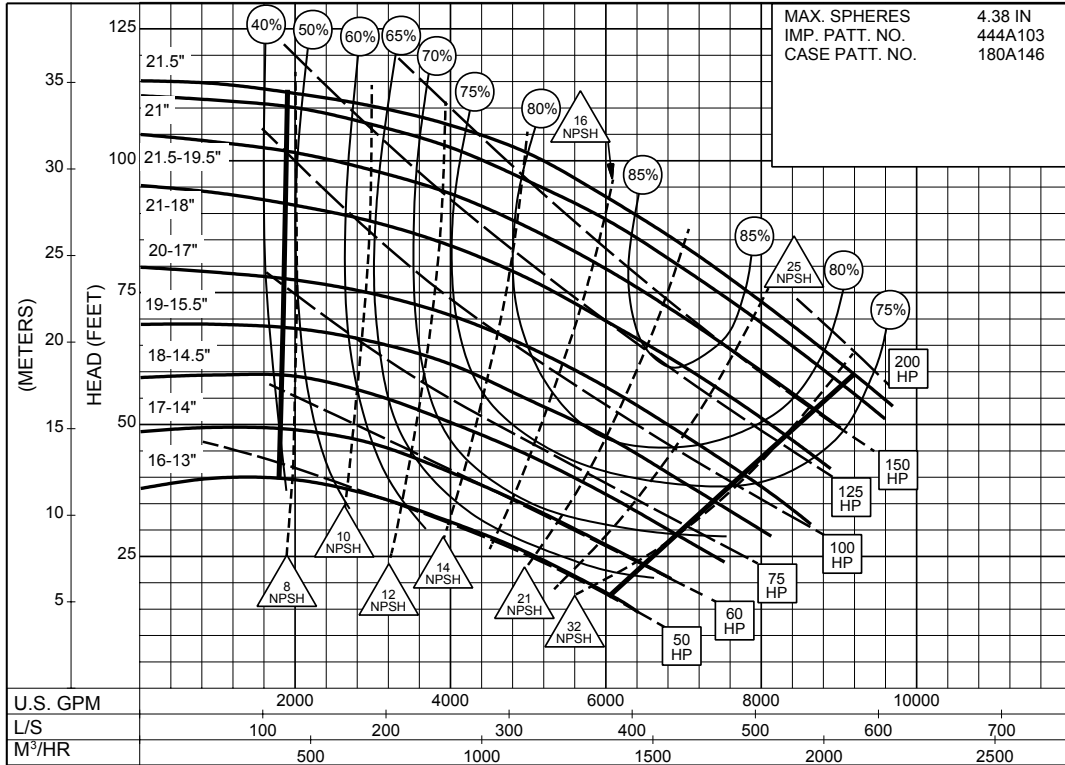
ENCLOSED IMPELLER

Section **610** Page **421**  
Date **April 2001**

Supersedes Section 610 Page 424A  
Dated November 1992



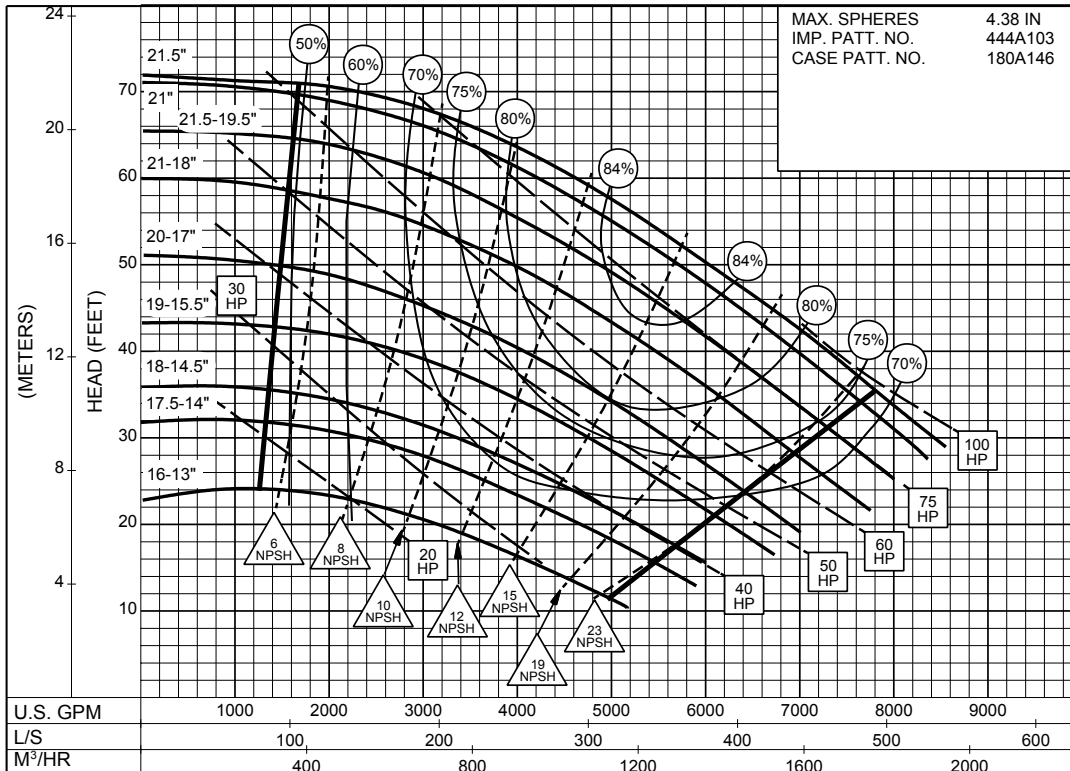
SIZE : 12x14x22A TYPE : 610 IMPELLER : Enclosed R. P. M. : 875



8PC-126830

**875**  
RPM

SIZE : 12x14x22A TYPE : 610 IMPELLER : Enclosed R. P. M. : 700

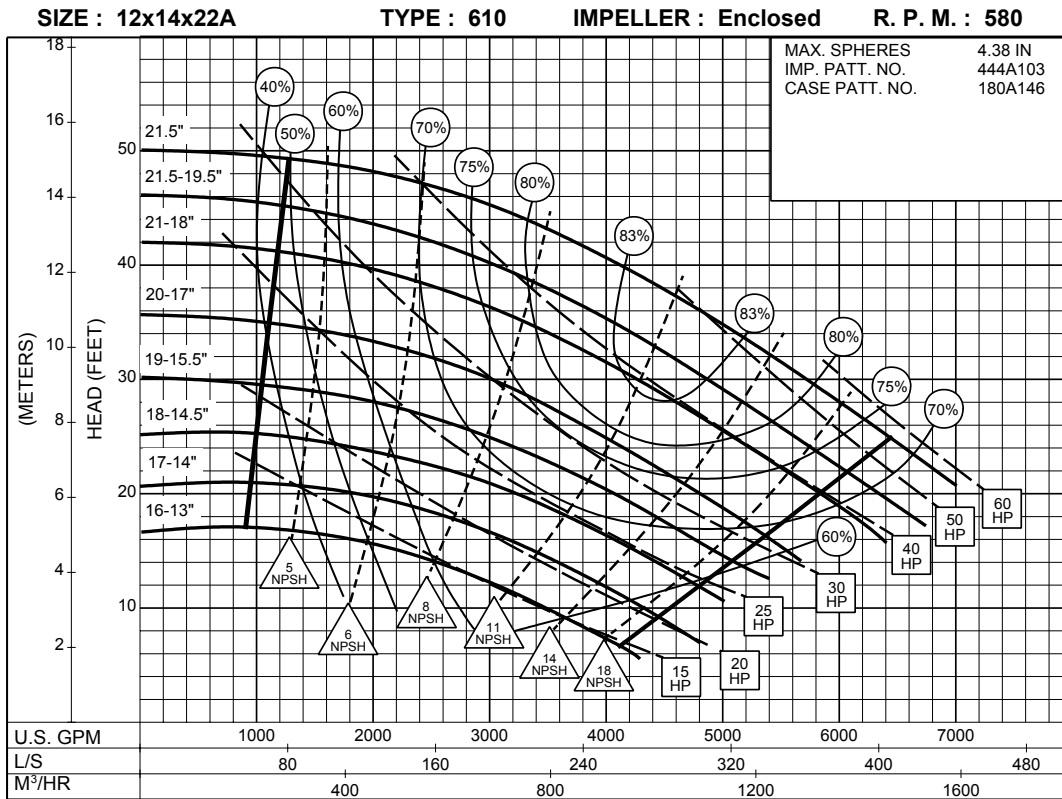


8PC-126831

**700**  
RPM

# 12 x 14 x 22A SERIES 610

ENCLOSED IMPELLER



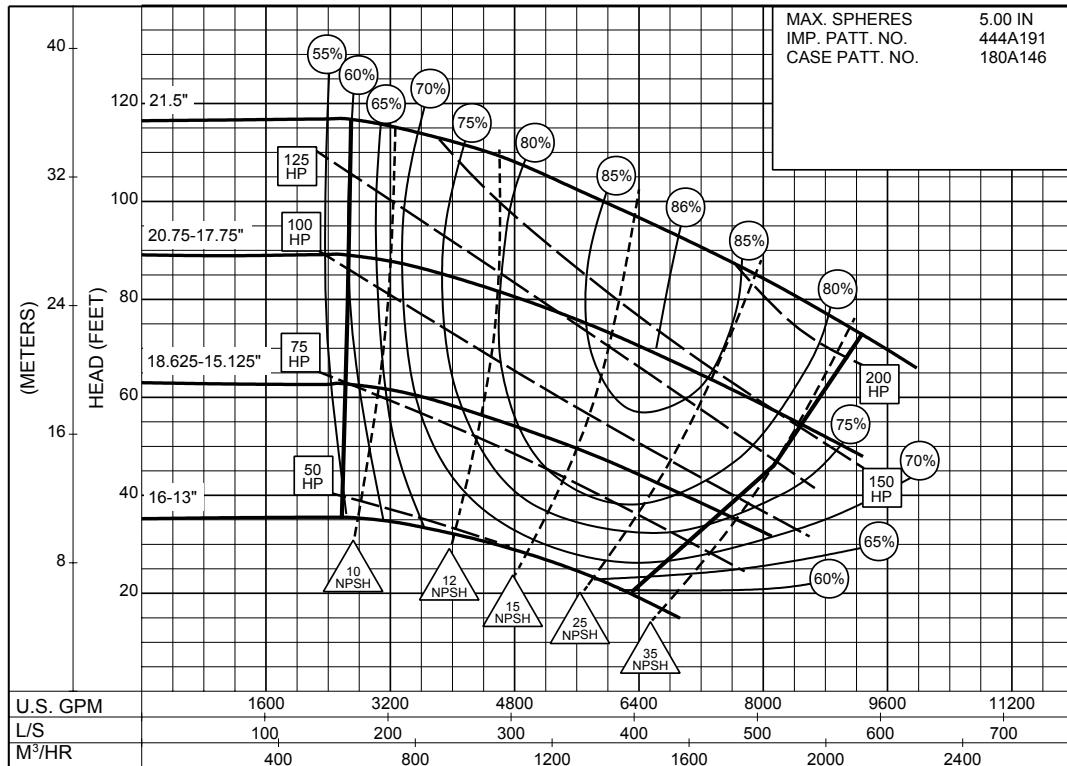
580  
RPM

**12 x 14 x 22B**

**SERIES 610**

ENCLOSED IMPELLER

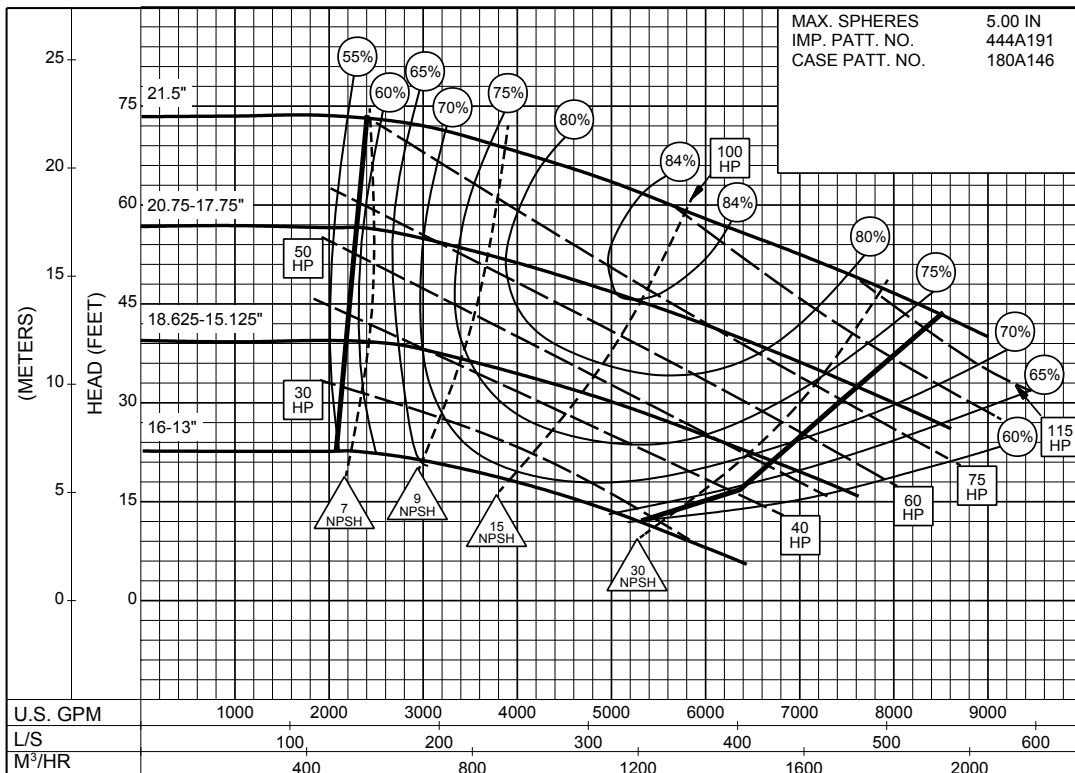
SIZE : 12x14x22B TYPE : 610 IMPELLER : Enclosed R. P. M. : 875



8PC-132458

**875**  
RPM

SIZE : 12x14x22B TYPE : 610 IMPELLER : Enclosed R. P. M. : 700



8PC-132459

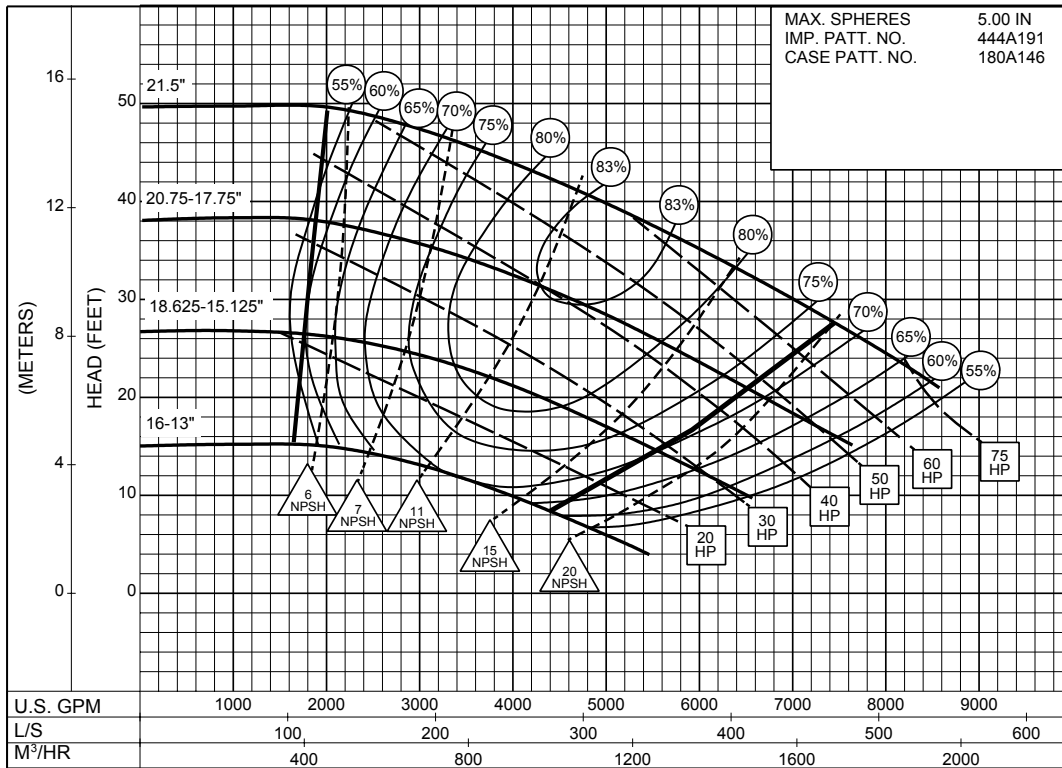
**700**  
RPM



# 12 x 14 x 22B SERIES 610

ENCLOSED IMPELLER

SIZE : 12x14x22B      TYPE : 610      IMPELLER : Enclosed      R. P. M. : 580



**580**  
RPM

8PC-132460

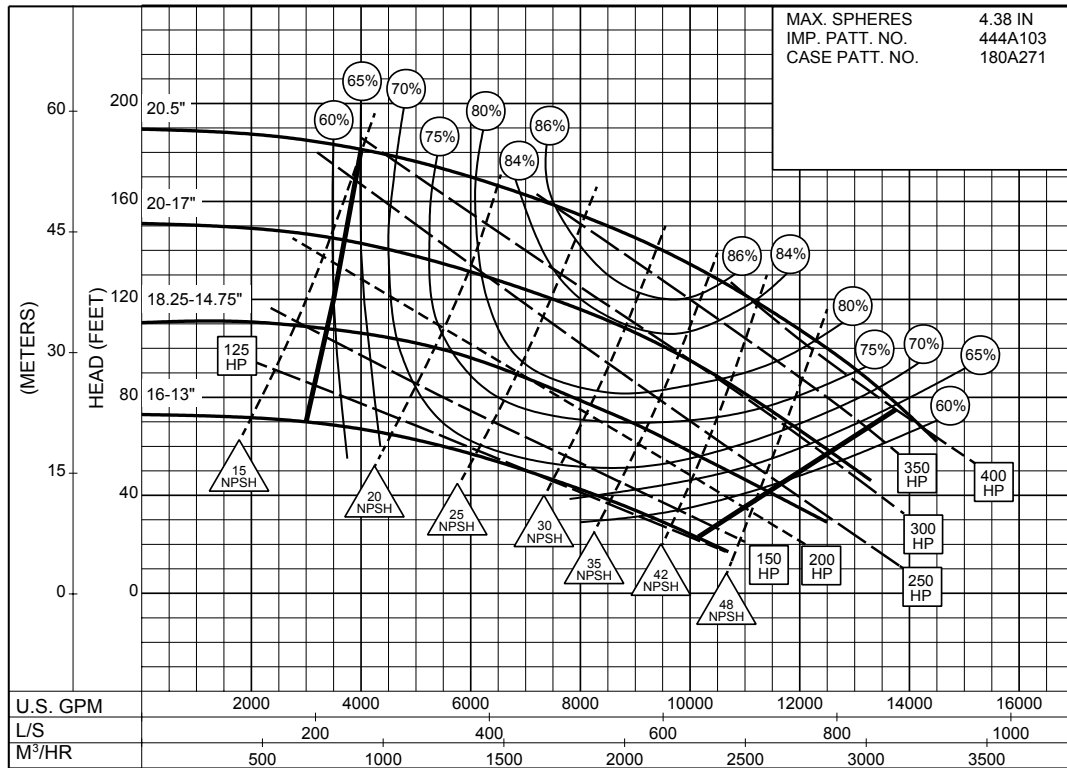
SIZE : 14x14x22A

TYPE : 610

IMPELLER : Enclosed

R. P. M. : 1175

MAX. SPHERES 4.38 IN  
IMP. PATT. NO. 444A103  
CASE PATT. NO. 180A271

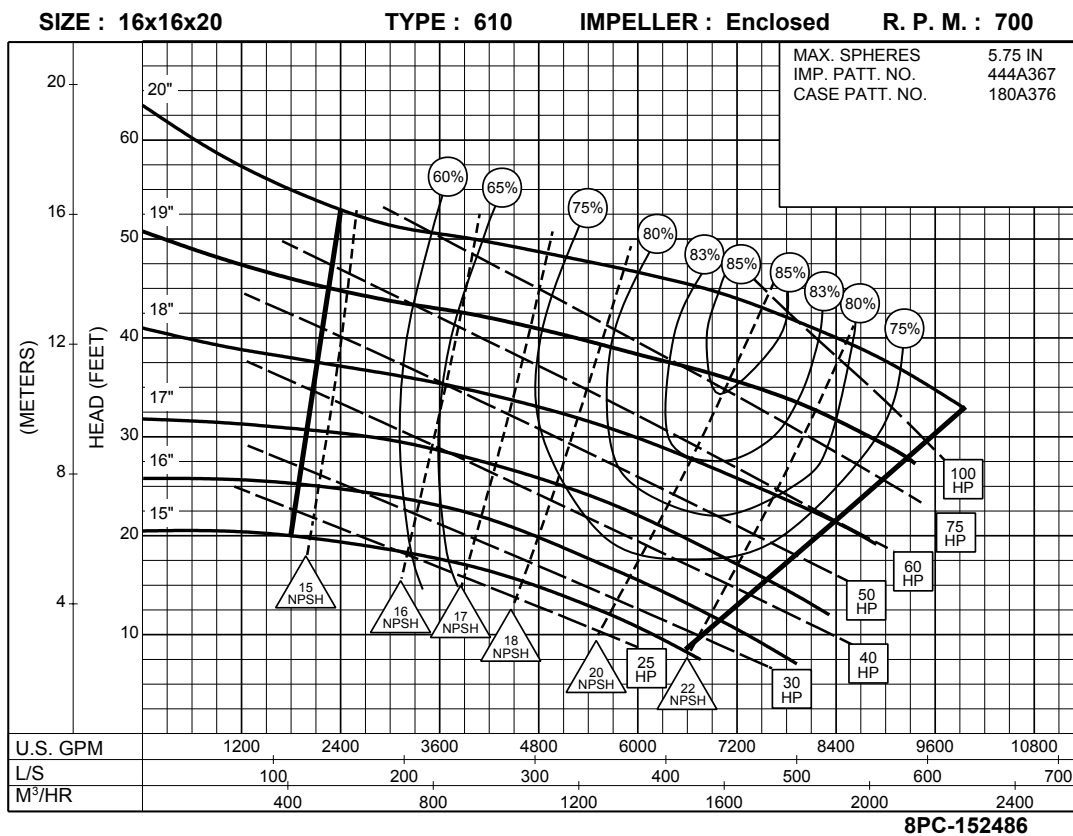
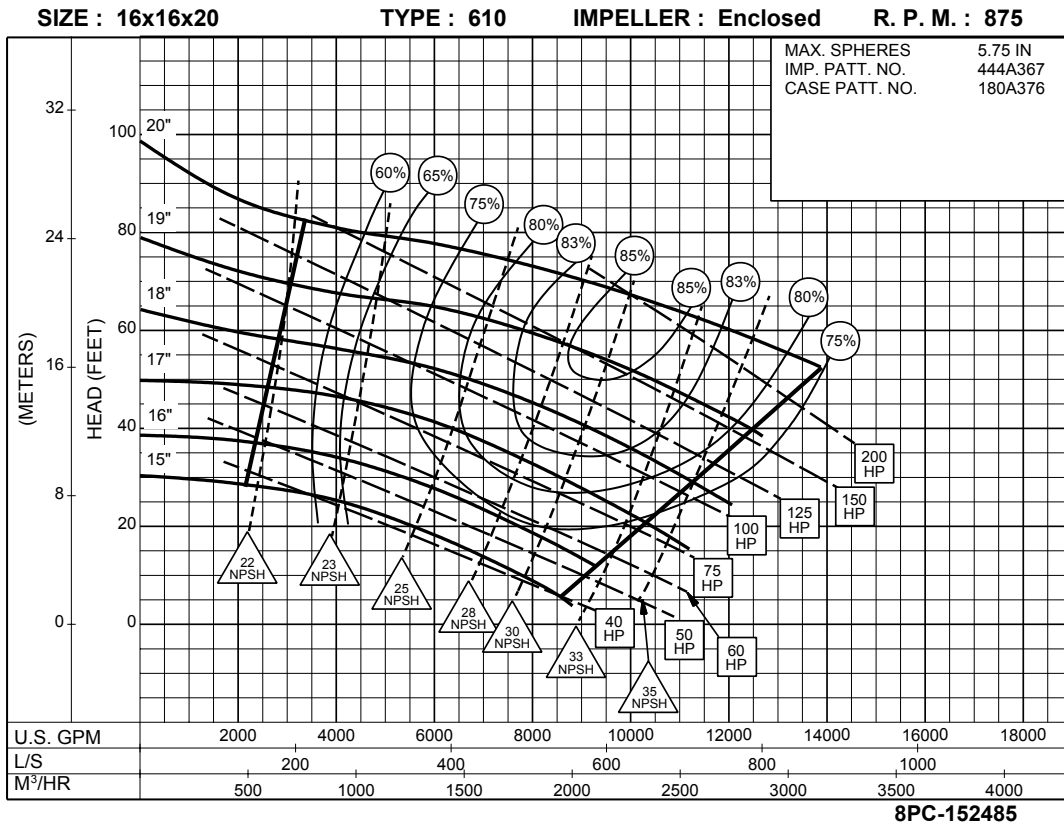


**1175**  
RPM

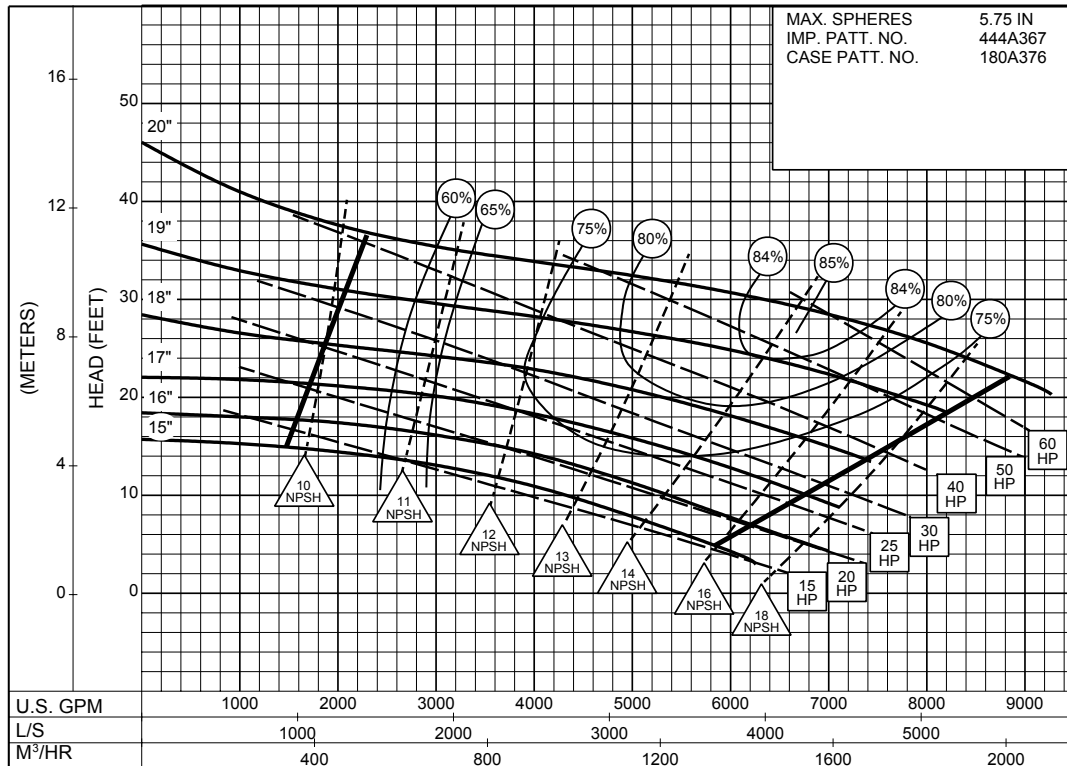
PC-150828

# 16 x 16 x 20 SERIES 610

## ENCLOSED IMPELLER



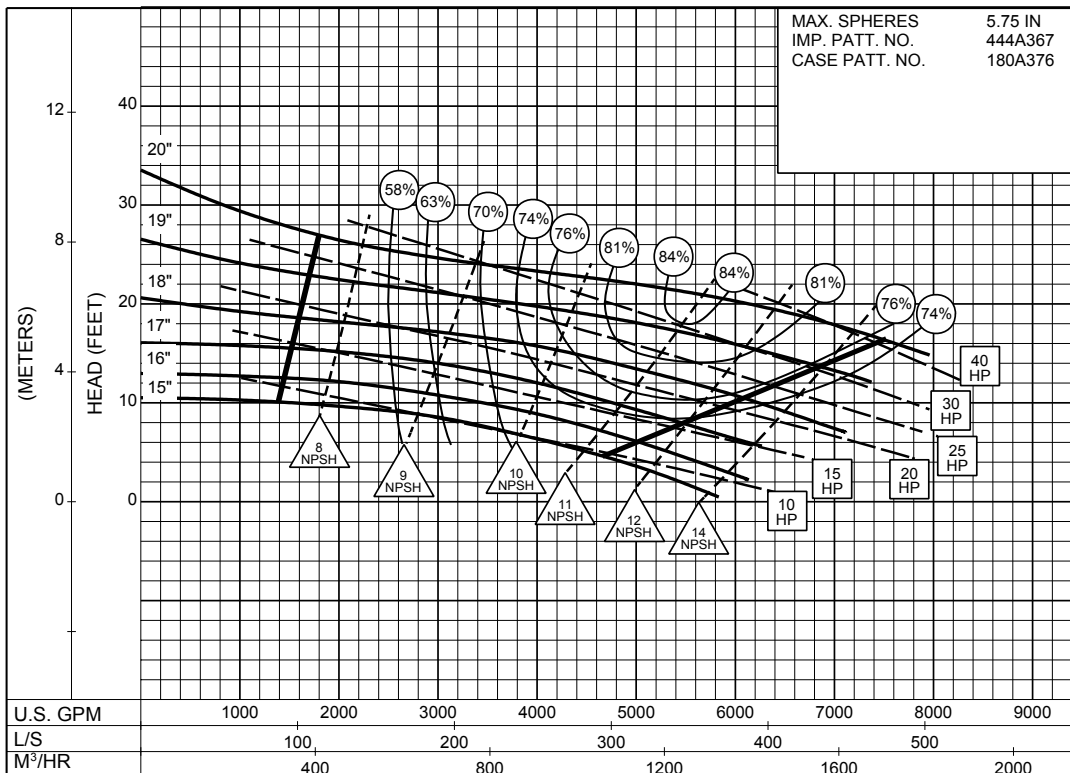
**SIZE : 16x16x20      TYPE : 610      IMPELLER : Enclosed      R. P. M. : 585**



**8PC-152487**

**585**  
RPM

**SIZE : 16x16x20      TYPE : 610      IMPELLER : Enclosed      R. P. M. : 500**

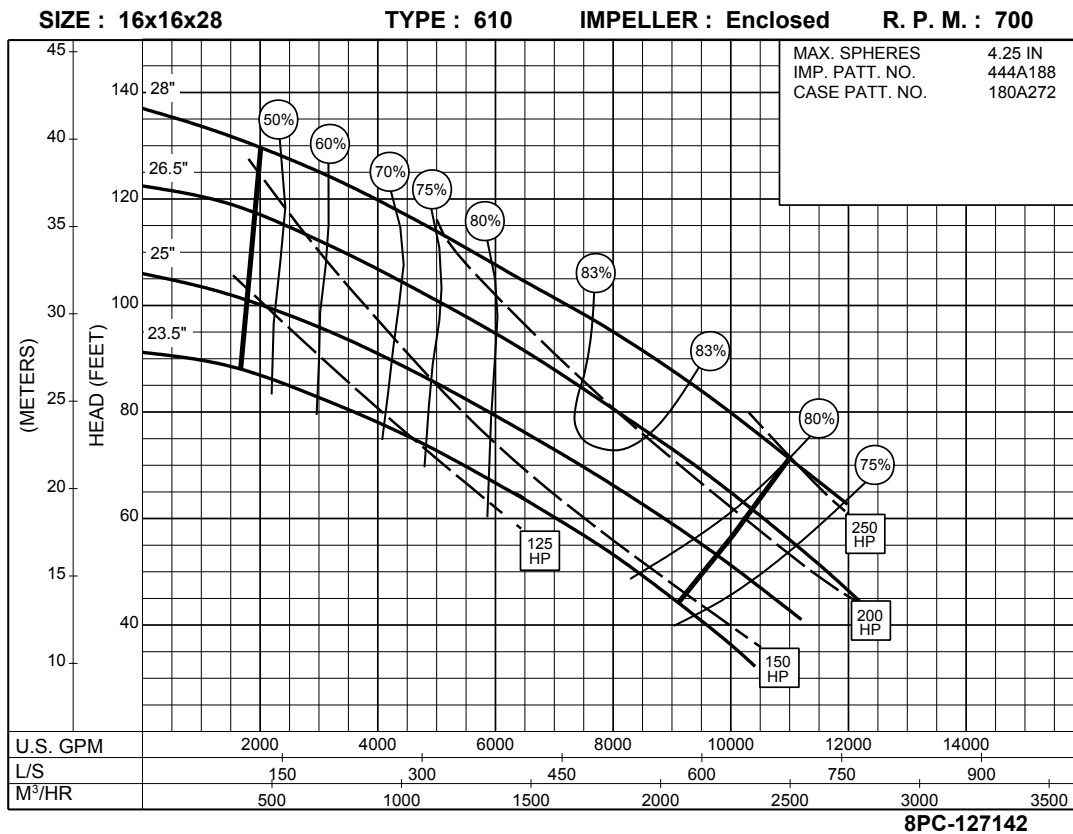
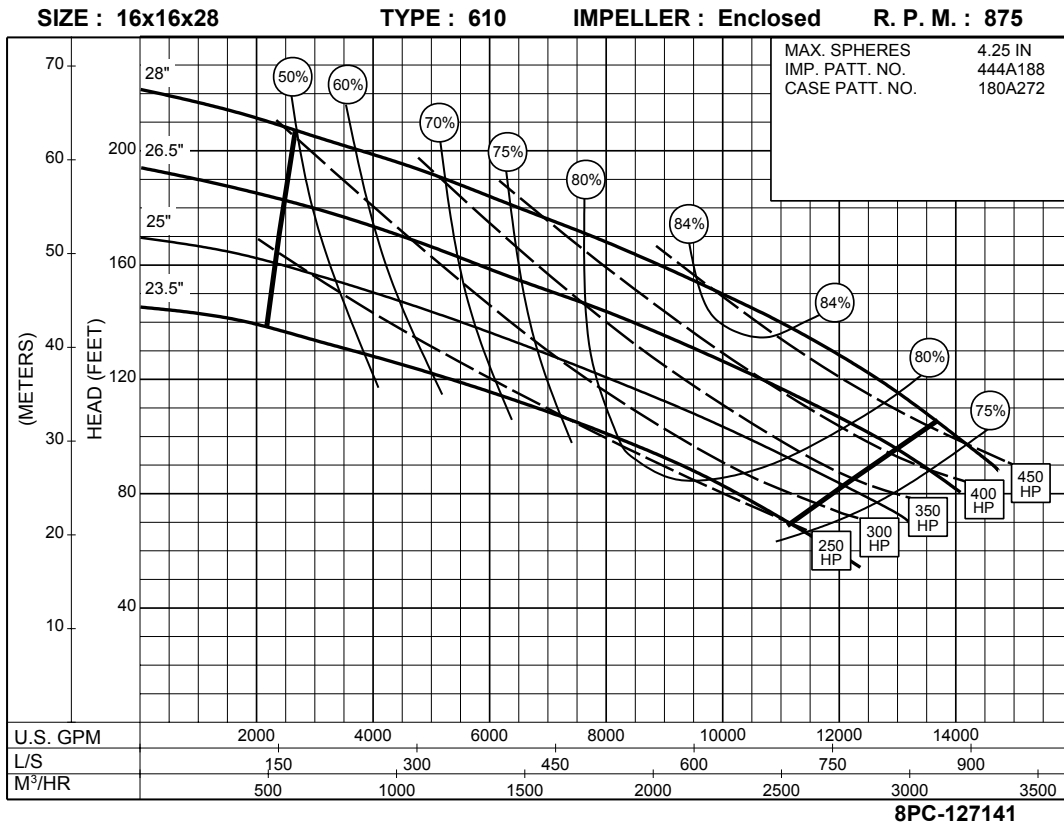


**PC-152488**

**500**  
RPM

# 16 x 16 x 28 SERIES 610

ENCLOSED IMPELLER



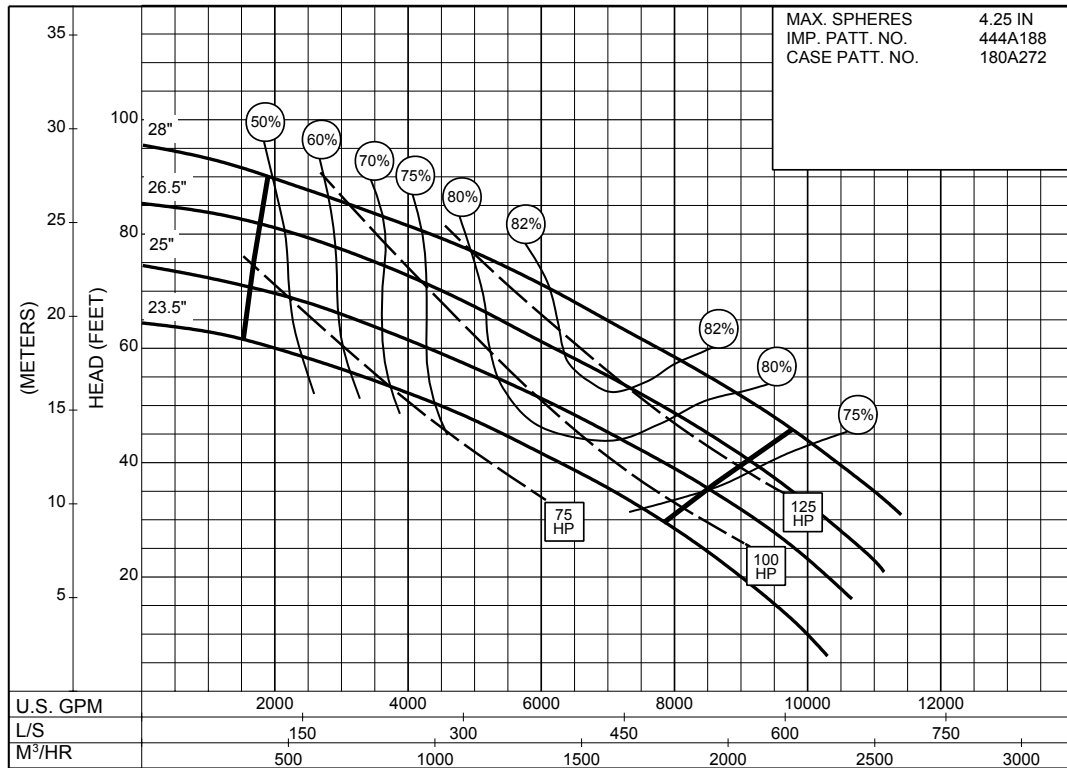
SIZE : 16x16x28

TYPE : 610

IMPELLER : Enclosed

R. P. M. : 585

MAX. SPHERES 4.25 IN  
IMP. PATT. NO. 444A188  
CASE PATT. NO. 180A272

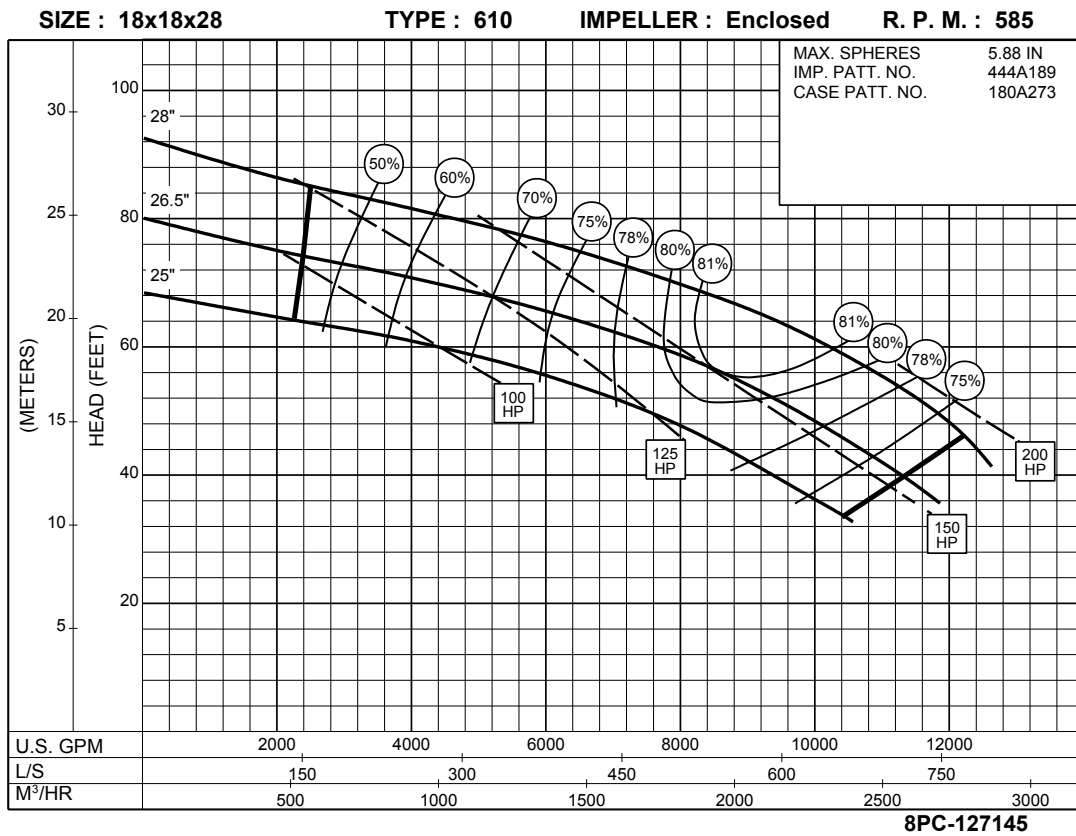
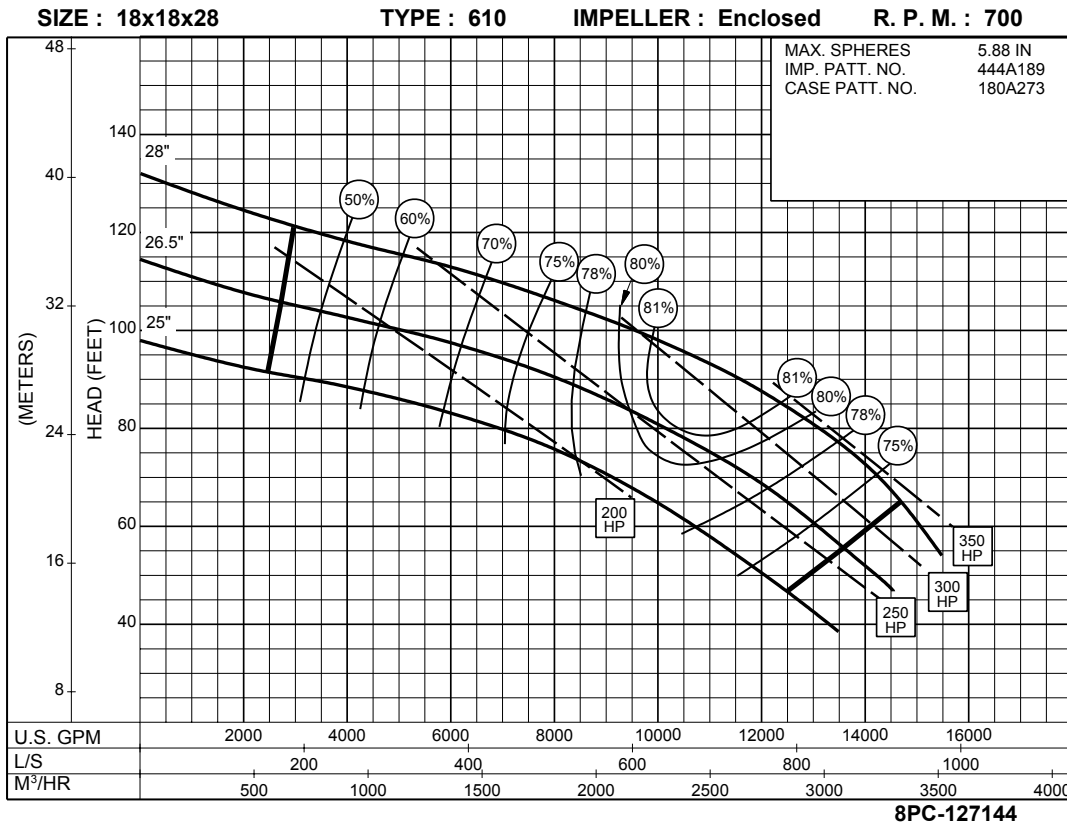


**585**  
RPM

8PC-127143

# 18 x 18 x 28 SERIES 610

ENCLOSED IMPELLER



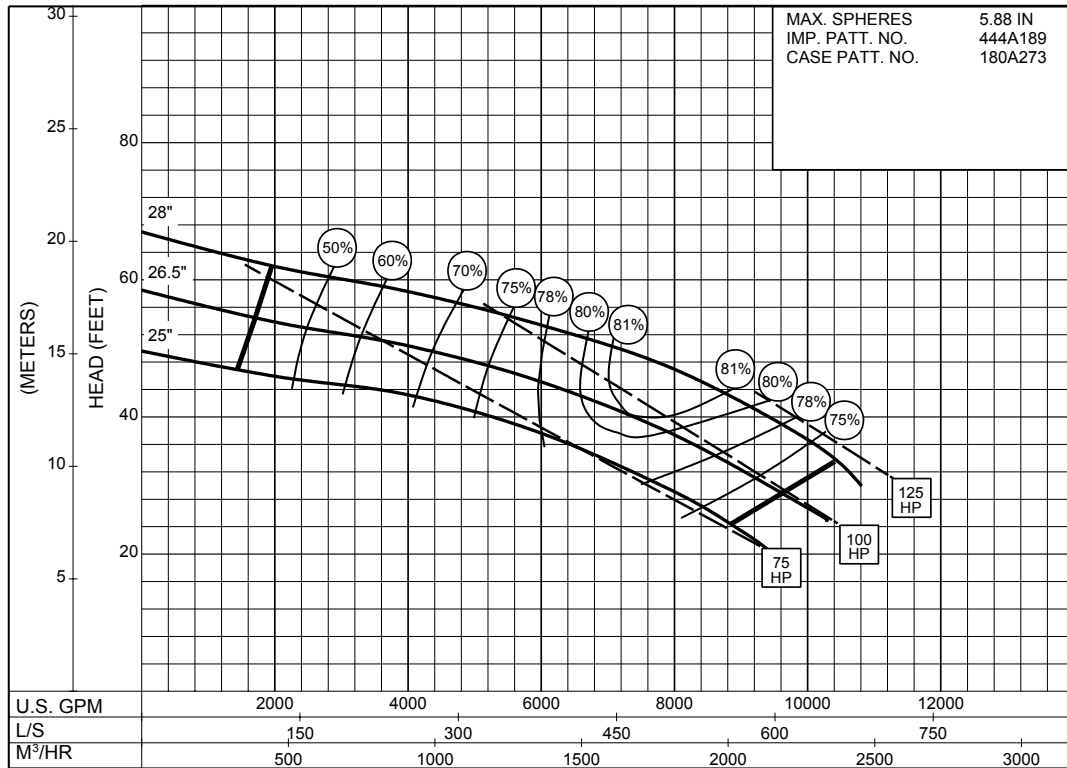
SIZE : 18x18x28

TYPE : 610

IMPELLER : Enclosed

R. P. M. : 500

MAX. SPHERES 5.88 IN  
IMP. PATT. NO. 444A189  
CASE PATT. NO. 180A273

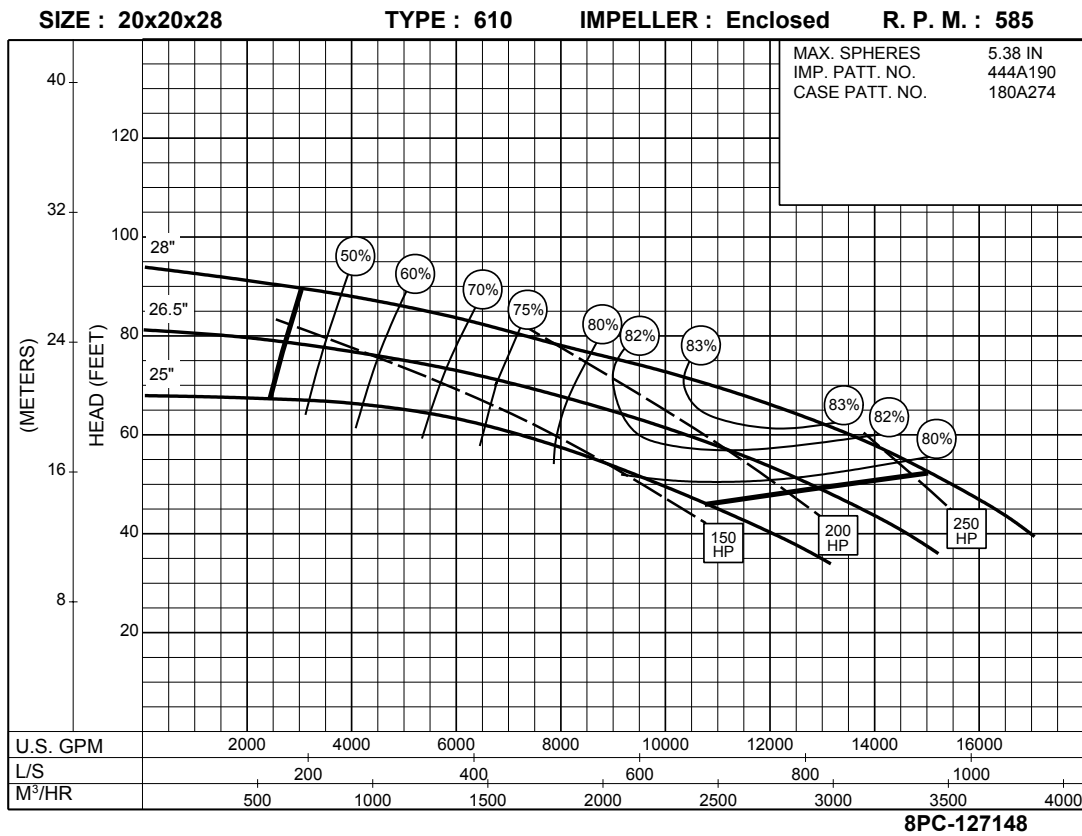
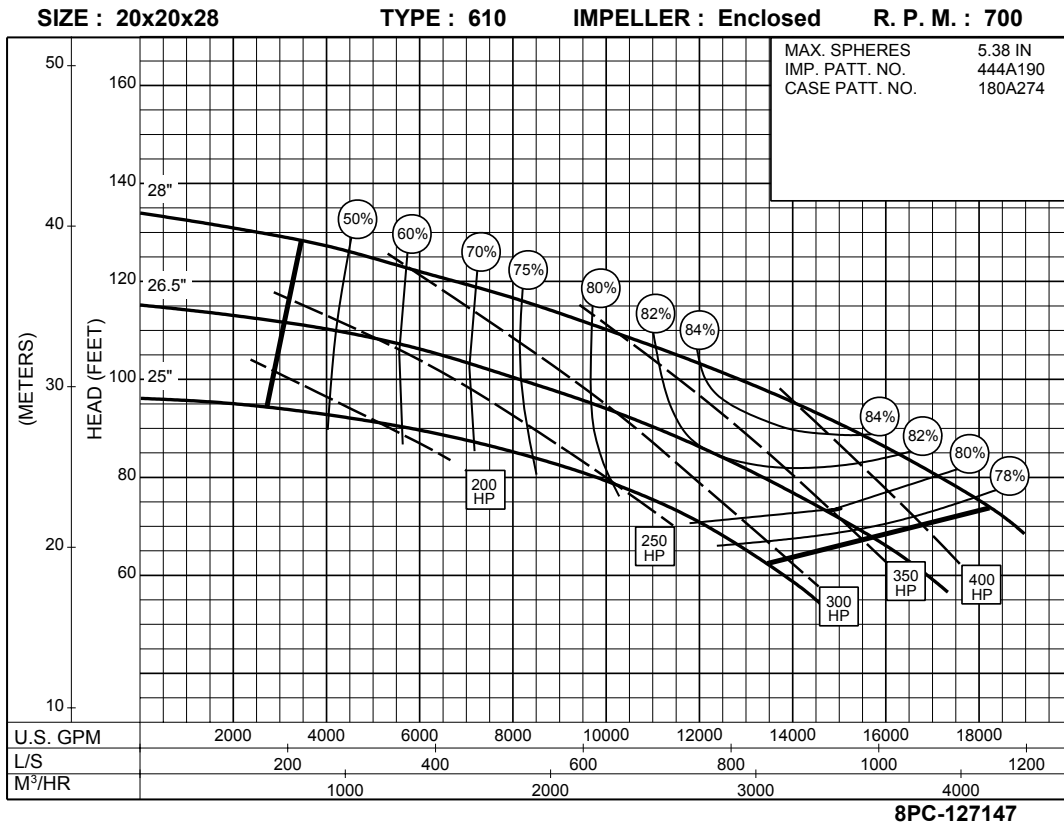


8PC-127146



# 20 x 20 x 28 SERIES 610

ENCLOSED IMPELLER



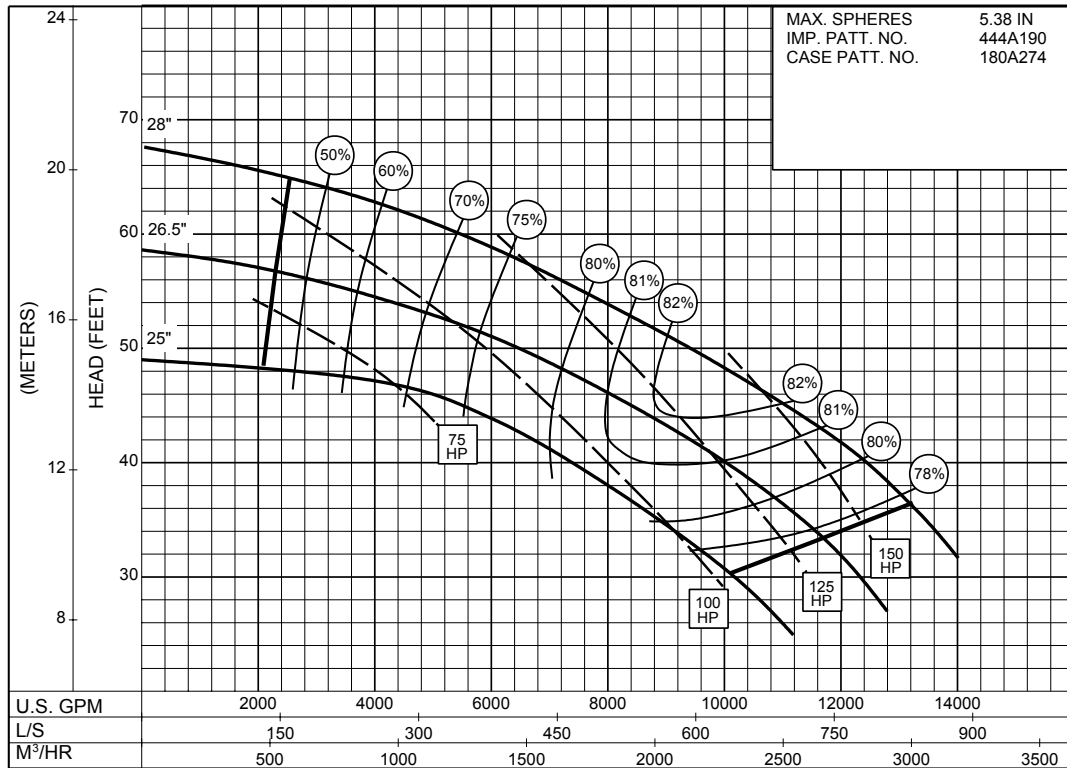
SIZE : 20x20x28

TYPE : 610

IMPELLER : Enclosed

R. P. M. : 500

MAX. SPHERES 5.38 IN  
IMP. PATT. NO. 444A190  
CASE PATT. NO. 180A274



**500**  
RPM

8PC-127149