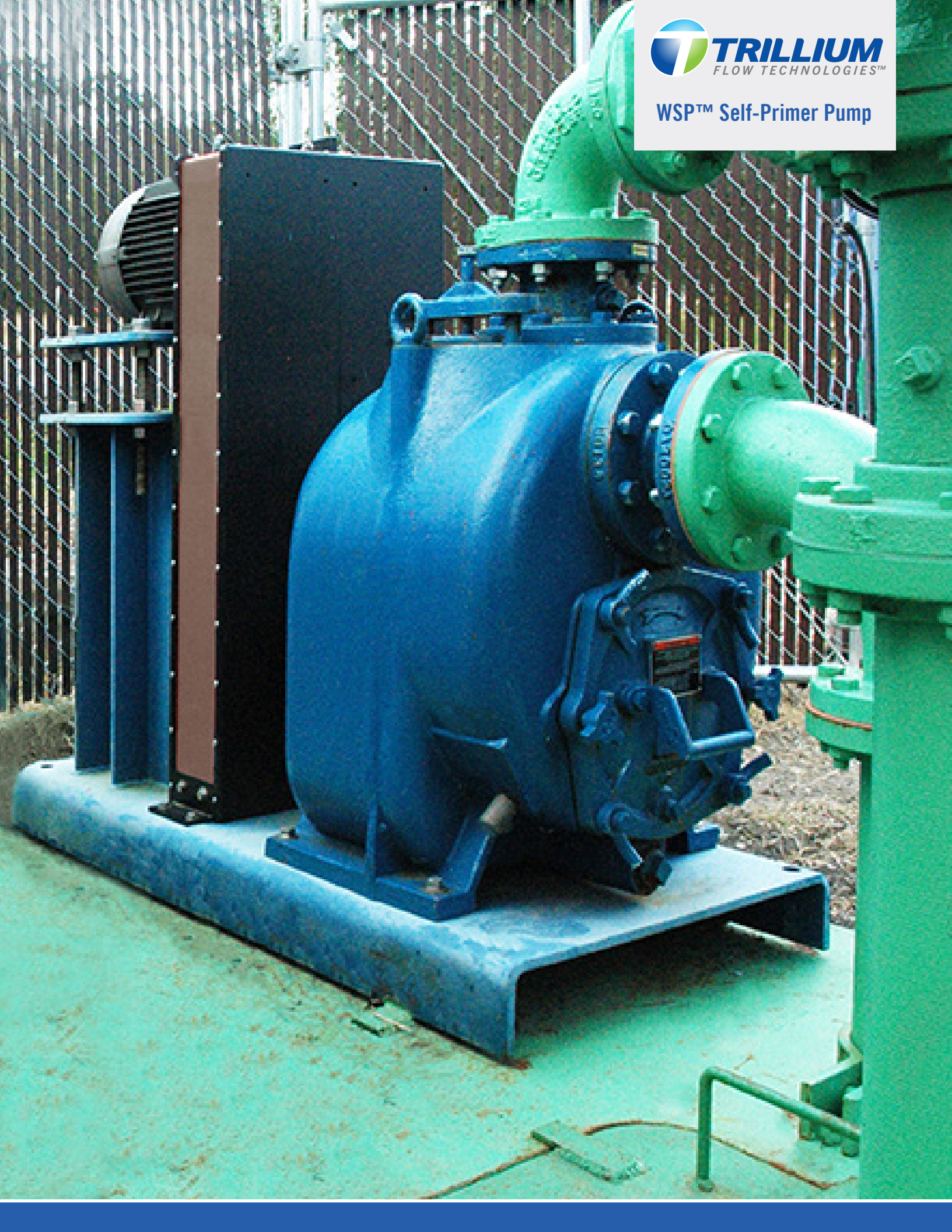




WSP™ Self-Primer Pump



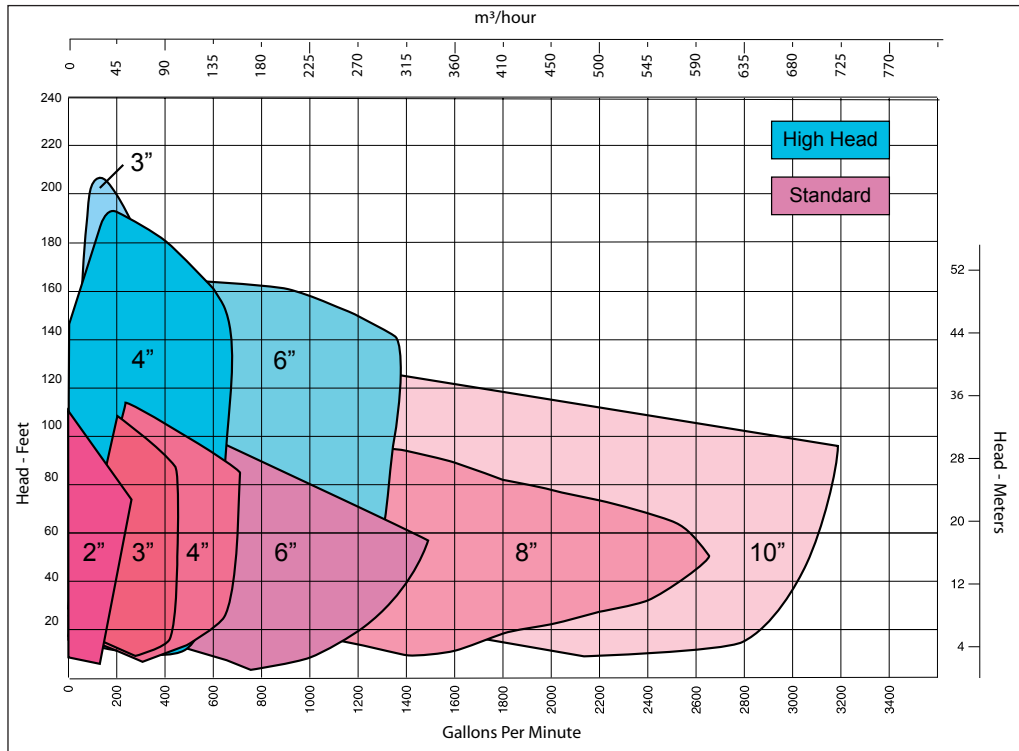
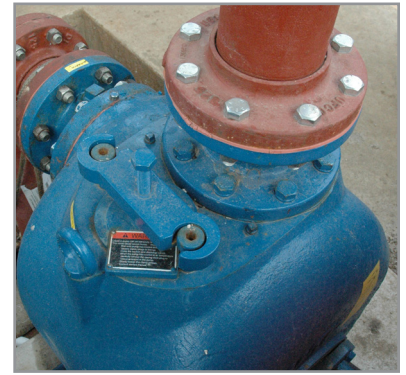
## WSP Self-Primer Pump

The WSP self-primer pump is a rugged and dependable self-priming, solids handling, trash pump. Distinguishable from our competitors, the WSP self-primer pump design allows for a shim-less, tool-less impeller adjustment and ease of suction flap valve replacement.

The Buzzsaw™ wear plate is a standard feature on WSP self-primer pumps. With an aggressive saw tooth shaped profile, its shearing of stringy materials as they pass through the pump prevents clogs before they can form. The Buzzsaw wear plate helps prevent the WSP self-primer pump from running

in a state of partial clog and allows the pump to run at higher overall efficiencies while lowering maintenance costs, extending valuable runtime. The Buzzsaw wear plate is not available in high-head models.

Equal in importance to maintenance is safety. The WSP self-primer pump is designed with the added benefit of the fill port cover and clamp bar assembly. The recessed bolt-locking construction and anti-rotation design of the clamp bar assembly prevents accidental breach of the fill port cover, protecting the operator from scalding burns.



### APPLICATIONS

Municipal and industrial waste water  
 Metal machining  
 Production, manufacturing  
 Dewatering  
 Mining and minerals  
 Winery

Automotive  
 Beef, pork, poultry processing  
 Pulp and paper  
 Tanker truck unloading  
 Drilling mud recovery  
 Food and beverage

### STANDARD FEATURES

17-4PH Stainless steel shaft  
 Shim-less impeller adjustment  
 Solid silicon carbide seal faces  
 Flanged suction and discharge  
 Two-piece bearing housing

Carbon steel Impeller  
 Ductile Iron casing  
 Tool-less impeller adjustment  
 Advanced safety features  
 Buzzsaw wear plate (not available in high-head models)

## WSP Self-Primer Pump

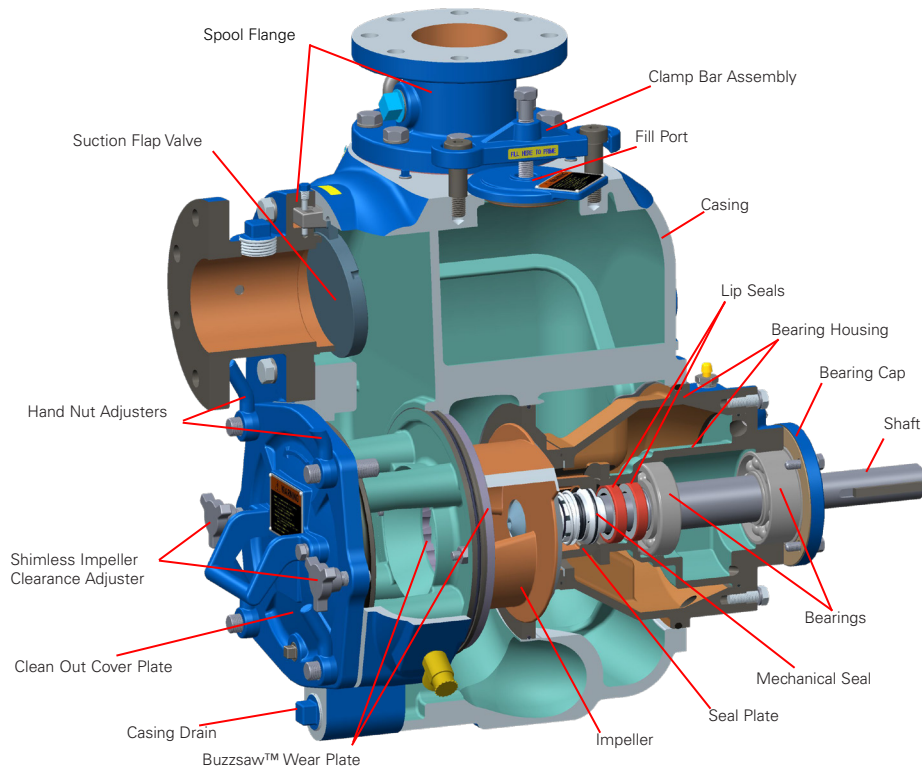


Size	Flow	Heads	Repriming Lift	Solids Size
2 inch (50 mm)	to 225 GPM (51 m <sup>3</sup> /hr)	to 103 ft (31 m)	up to 24 ft (7.3 m)	1.5 inch (38 mm)
3 inch (75 mm)	to 450 GPM (102 m <sup>3</sup> /hr)	to 112 ft (34 m)	up to 25 ft (7.6 m)	2.5 inch (63.5 mm)
4 inch (100 mm)	to 730 GPM (166 m <sup>3</sup> /hr)	to 119 ft (36 m)	up to 25 ft (7.6 m)	3 inch (75 mm)
6 inch (150 mm)	to 1,480 GPM (336 m <sup>3</sup> /hr)	to 111 ft (34 m)	up to 25 ft (7.6 m)	3 inch (75 mm)
8 inch (200 mm)	to 2,620 GPM (595 m <sup>3</sup> /hr)	to 109 ft (33 m)	up to 23 ft (7 m)	3 inch (75 mm)
10 inch (250 mm)	to 3,200 GPM (727 m <sup>3</sup> /hr)	to 133 ft (41 m)	up to 22 ft (6.7 m)	3 inch (75 mm)

## WSP High Head Self-Primer Pump



Size	Flow	Heads	Repriming Lift	Solids Size
3 inch (75 mm)	to 370 GPM (84 m <sup>3</sup> /hr)	to 210 ft (64 m)	up to 23 ft (7 m)	0.81 inch (20 mm)
4 inch (100 mm)	to 650 GPM (148 m <sup>3</sup> /hr)	to 190 ft (58 m)	up to 17 ft (5.1 m)	1.12 inch (28 mm)
6 inch (150 mm)	to 1360 GPM (309 m <sup>3</sup> /hr)	to 175 ft (53 m)	up to 15 ft (4.5 m)	1.25 inch (32 mm)



### AVAILABLE UPGRADES

#### Buzzsaw Wear Plate

- 316 Stainless steel
- Wear-resistant Alloy (400 BHN)

#### Casing

- CD4MCu

#### Impeller and Seal Plate

- High-chrome
- CD4MCu

#### Mechanical Seal

- Tungsten carbide faces



## WSP Self-Primer Pump

440 West 800 South  
Salt Lake City, Utah 84101  
USA

T 801 359 8731  
[www.trilliumflow.com](http://www.trilliumflow.com)

