



Ansichem



**Single-stage
volute casing pump
to ANSI standards
stocked in the U.S.A.**

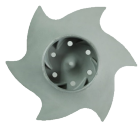
Ansichem

A versatile, heavy-duty ANSI process pump with interchangeable impeller and cover types for a broad range of applications.

KSB's reliable ANSI pump solution stocked in the U.S.A.

- Fully compliant with ANSI B73.1 standards
- Engineered for durability and cost-efficient operation
- Extensive range of variants to suit diverse applications
- Modular design simplifies maintenance and service
- Capable of handling solids in demanding environments
- Available in self-priming variants for added versatility
- Interchangeable power frames with other manufacturers

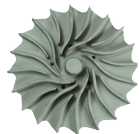
Impeller selection



The reverse vane impeller, designed with balance holes, enhances performance while reducing maintenance requirements.

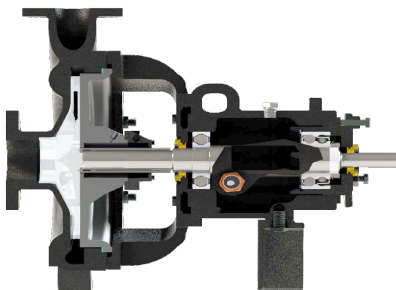


The front vane, semi-open impeller is fully interchangeable with the reverse vane impeller. It excels in handling stringy materials and applications requiring high shear against the casing.



The front vane, low-flow semi-open impeller minimizes thrust loads and vibration, ensuring smooth operation at low flow rates.

Product specifications



Materials:

Carbon Steel, 316SS, CD4MCu, Alloy 20, Hastelloy C

Impellers:

Reverse vane, front vane semi-open, front vane low flow semi-open

Applications:

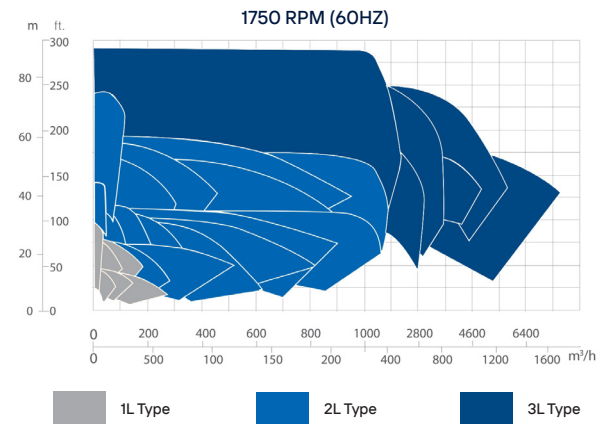
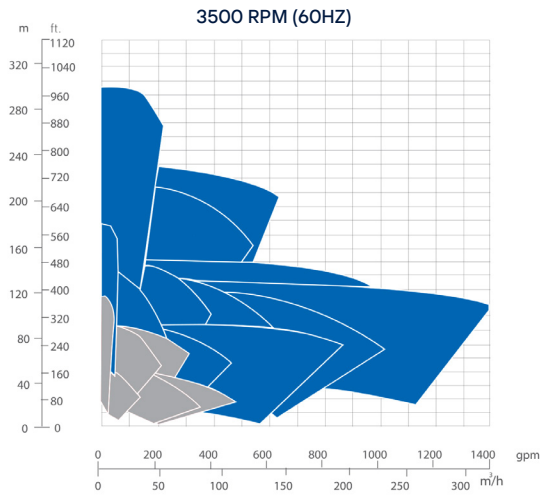
Chemical, Petrochemical, Sugar, Brine, Steel, Biodiesel / Bioethanol, Desalination, Reverse Osmosis

Technical data:

GPM up to 7000
Ft. up to 750
psi up to 350
T °F -200 to 700

Connections:

Flange, 1 to 8"
Class 150, 300



PUFFER Rotating Equipment
Pumps & Parts ▪ Pump Skids ▪ Repairs & Services

12305 Kurland Dr, Houston, TX 77034
RotatingEquipment@puffer.com 281-240-2000



Authorized Sales Partner