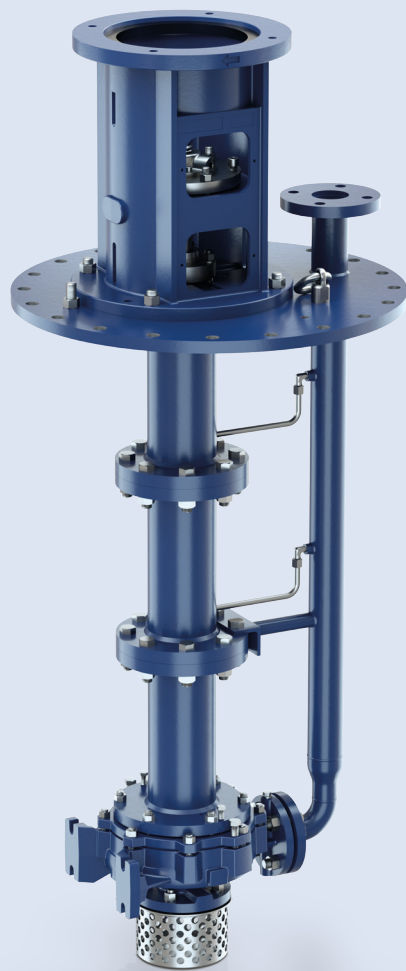


Estigia – Vertical, single stage, medium duty sump pump type VS4



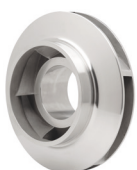
Applications:

Pump for handling a wide range of fluids. These pumps can be used for organic and inorganic fluids with or without moderate solids content.

- Automotive industry
- Iron and steel industry
- Marine applications
- Food industry
- Paper industry
- Chemical and petrochemical industries
- Water treatment systems
- Surface treatment systems
- Paint booths
- Air-conditioning systems
- Washing plants
- Energy generating plants
- Mining

For more information, visit:
ksb.us.com

3 impeller types available



Closed



Channel



Vortex

Estigia – Vertical, single stage, medium duty sump pump type VS4

Proven performance

Estigia combines the proven technology of the MegaCPK industrial pump to ISO 5199 and the Amarex KRT submersible wastewater pump series.

1 Wide application range

Three impeller types available to meet the requirements of the fluid handled.

- Closed impeller for clean liquids.
- Multi-channel impeller (K) for fluids with a moderate content of small solids.
- Vortex impeller (F) for fluids containing fibers or entrapped air/gas.

2 Robust radial bearings

Pump-side plain bearings made of SiC/SiC offer low wear and reliable operation. Different lubrication options available to suit specific challenges.

- Lubrication by fluid handled.
- Injection of external fluid.
- External grease supply.

3 Integral thrust bearings

Grease-packed bearings sealed for life are designed for a minimum rated lifetime of 17,000 hours according to ISO 5199. The motor bearings are not subject to loads from the pump.

4 Variety of seals

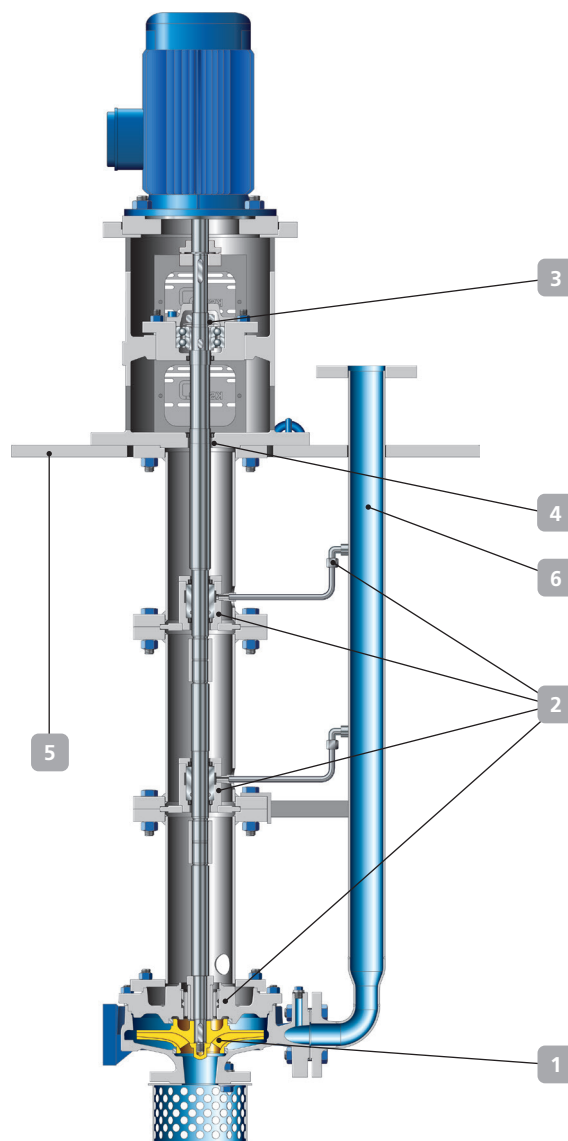
Shaft with lip seal as standard. Different types of mechanical seals, e.g. single and double cartridge seals as well as seals to API 682 category 1, are available to meet specific requirements.

5 Flexible installation

Soleplate available in rectangular or circular (drilled to DIN or ASME) design allows easy adaptation to different installation conditions.

6 Reduced losses

Three different diameters for discharge piping for every pump size make for optimized pump selection with reduced head losses or higher flow speeds to avoid clogging.



Materials variants

- Casing in grey cast iron with impeller in stainless steel, duplex or white iron
- Casing and impeller in stainless steel
- Casing and impeller in duplex

Technical data	50 Hz	60 Hz
Max. flow rate	1,160 m ³ /h / 5,107 US gpm	1,450 m ³ /h / 6,380 US gpm
Max. head	110 m / 360 ft.	
Max. pressure	16 bar / 232 psi	
Max. temperature	100 °C / 212 °F	
Max. immersion depth	6 m / 19.5 ft.	

Deviating values on request



PUFFER Rotating Equipment
Pumps & Parts • Pump Skids • Repairs & Services

12305 Kurland Dr, Houston, TX 77034
RotatingEquipment@puffer.com 281-240-2000



Authorized Sales Partner