

Etachrom – Long-coupled / Close-coupled Pump

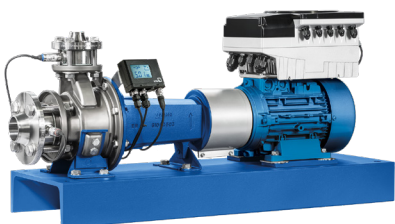


Applications:

- Water supply
- Fire-fighting systems
- Spray irrigation
- General irrigation
- Drainage
- Heating
- Air-conditioning systems
- Drinking water
- Service water
- Hot water
- Cooling water
- Swimming pool water
- Fire-fighting water
- Condensate
- Oils
- Cleaning agents

For more information, visit:
ksb.us.com

Etachrom B with KSB motor

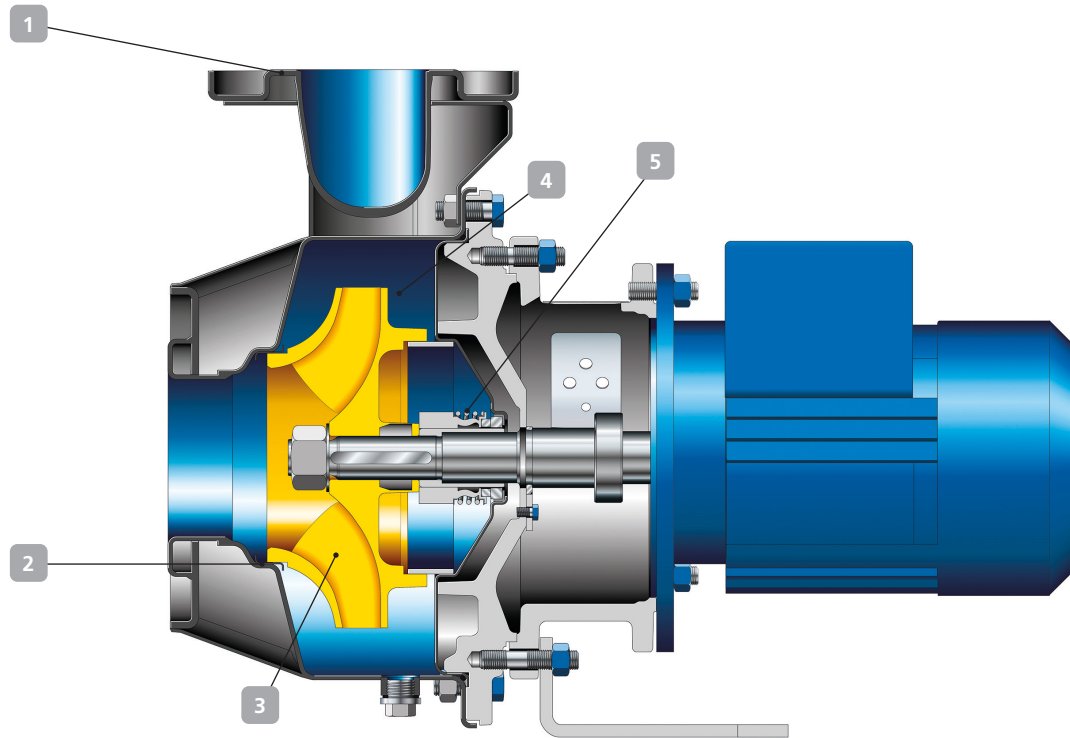


Etachrom L with motor
PumpDrive and PumpMeter



Etachrom L with motor

Etachrom – Long-coupled/Close-coupled Pump



Etachrom B

1 Corrosion-resistant

All wetted parts made of 316 stainless steel.

2 Resistant and service-friendly

- Replaceable casing wear rings.
- Back pull-out design for easy dismantling; no need to remove the pump casing from the piping.

3 Low energy input

- Optimized hydraulics yield high efficiency.
- Impeller diameters turned down to comply with the duty point save an average of 10% in energy consumption.
- Highly efficient pump set when used in combination with KSB's motor, PumpDrive, and PumpMeter.

4 Reliable

- Designed up to 174 psi.
- Wetted parts are free from primers and thus generally recognized as safe for handling drinking water.

5 Long-life, maintenance-free

High-quality standardized mechanical seal.

Versatility

- Round base feet or ball feet for installation without a foundation available.
- Testing to Hydraulic Institute Standards.

Material

316Ti Stainless steel

Technical data

Max. capacity	Up to 1,100 gpm
Max. discharge head	Up to 344 ft.
Fluid temperature	-20 °F to 230 °F
Max. pump discharge pressure	Up to 174 psi
Automation options: PumpDrive and PumpMeter	



PUFFER Rotating Equipment
Pumps & Parts ▪ Pump Skids ▪ Repairs & Services

12305 Kurland Dr, Houston, TX 77034
RotatingEquipment@puffer.com 281-240-2000

KSB
Authorized Sales Partner