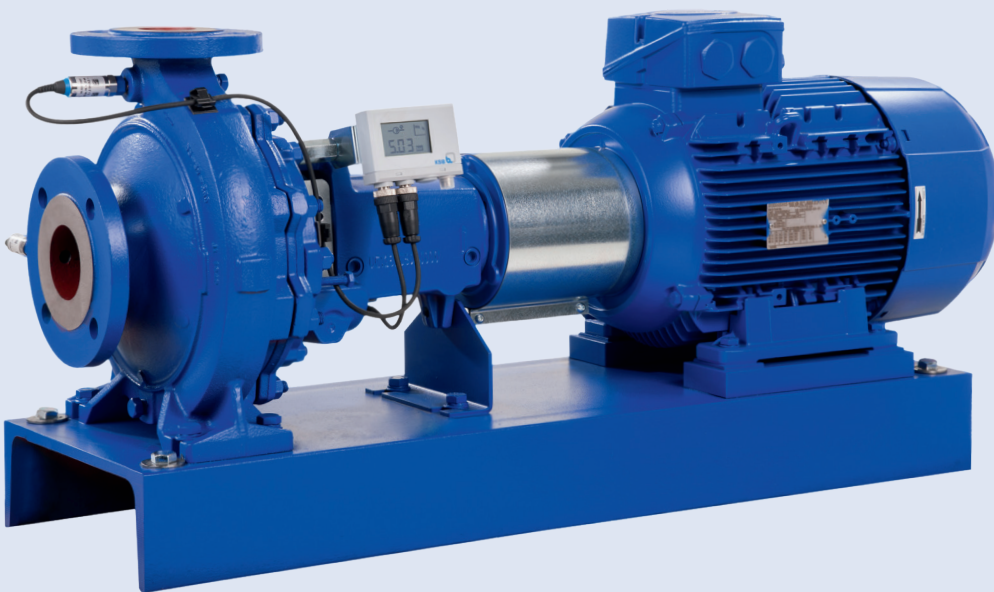


Etanorm – Standardized Water Pump



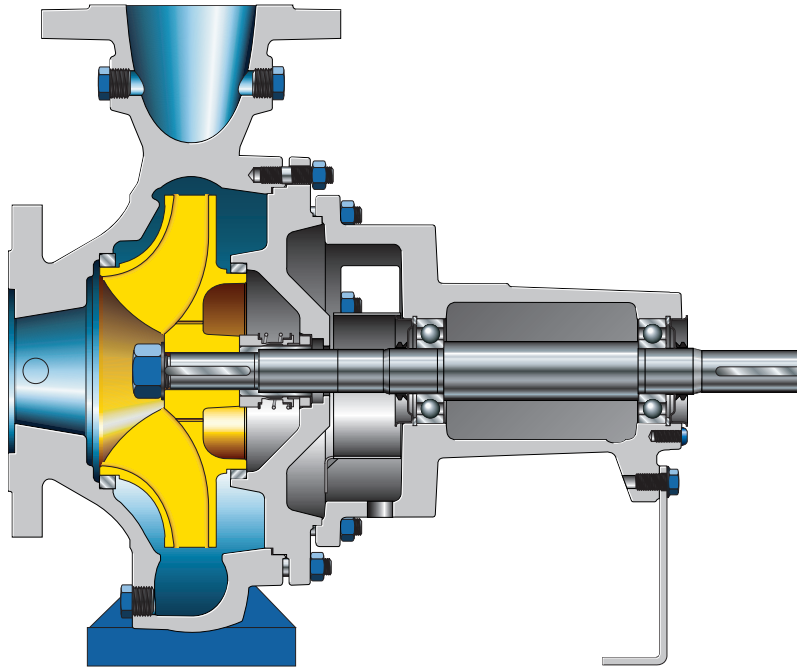
Applications:

Pure liquids not chemically or mechanically aggressive to the pump materials.

- Water supply
- Cooling water
- Swimming pool water
- Fire-fighting systems/water
- Seawater
- Spray irrigation
- Irrigation
- Service water
- Cleaning agents
- Drinking water
- Brackish water
- Drainage
- Condensate
- Heating, air-conditioning
- Oils
- Hot water
- Brine

For more information, visit:
ksb.us.com

Etanorm – Standardized Water Pump



- Low energy consumption**

Optimized and tested hydraulic system of high efficiency. As a standard, the impellers are trimmed to the operating point.
- Operating reliability**

Good suction performance for low vibration levels and very smooth running.
- Versatile**

Large choice of materials for many applications available as a standard.
- Diversity of variants**

Additional sizes for small flow rates extend the already diverse range of selection charts.
- Service-friendly**

Fast delivery of new pumps and spare parts. Easier to assemble and dismantle thanks to the large seal chamber and forcing screws between the casing cover and bearing bracket.

Technical data

Flow rate	Up to 6,019 gpm
Head	Up to 524 ft.
Fluid temperature	-22° F to 284° F
Pressure	up to 232 psi

Material variants

Grey cast iron JL1040 / Grey cast iron A 48 CL 35B
Nodular cast iron JS1030 / A536 GR 60-40-18
Stainless steel 1.4408 / A743 Gr CF8M
Bronze CC480K-GS/B30 C90700



PUFFER Rotating Equipment
Pumps & Parts ▪ Pump Skids ▪ Repairs & Services

12305 Kurland Dr, Houston, TX 77034
RotatingEquipment@puffer.com 281-240-2000



Authorized Sales Partner