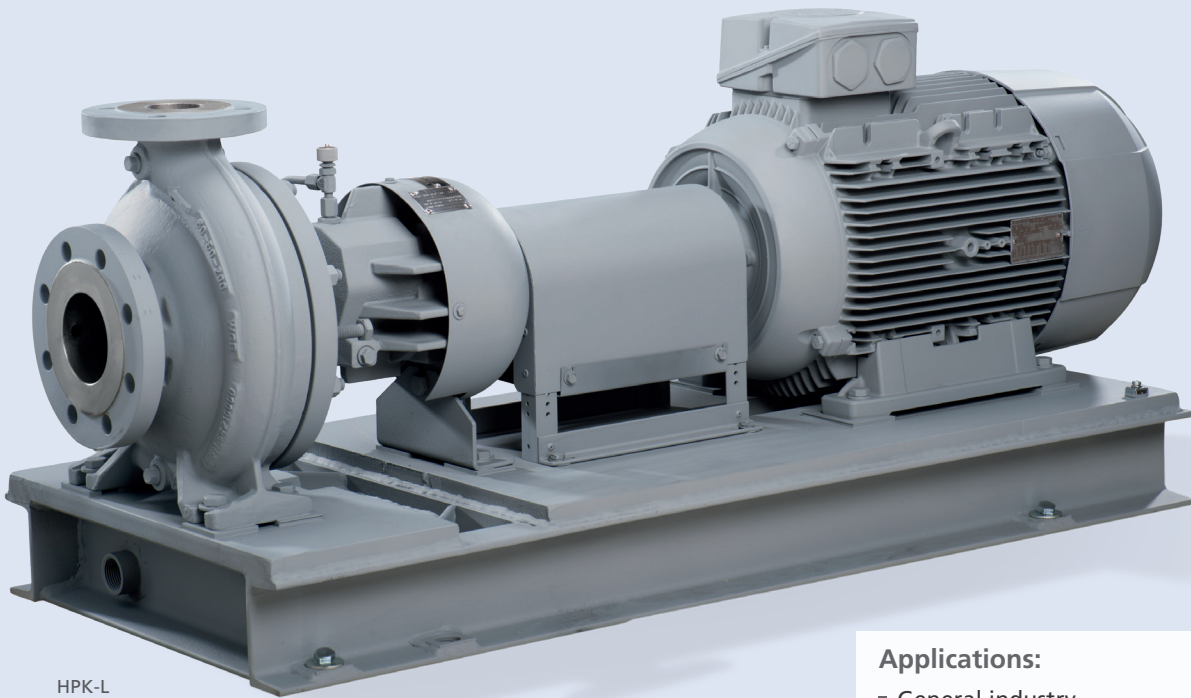


HPK/HPK-L – Heat Transfer Fluid/Hot Water Pump in Back Pull-out Design

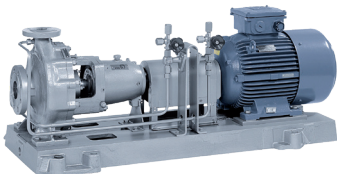


HPK-L

Applications:

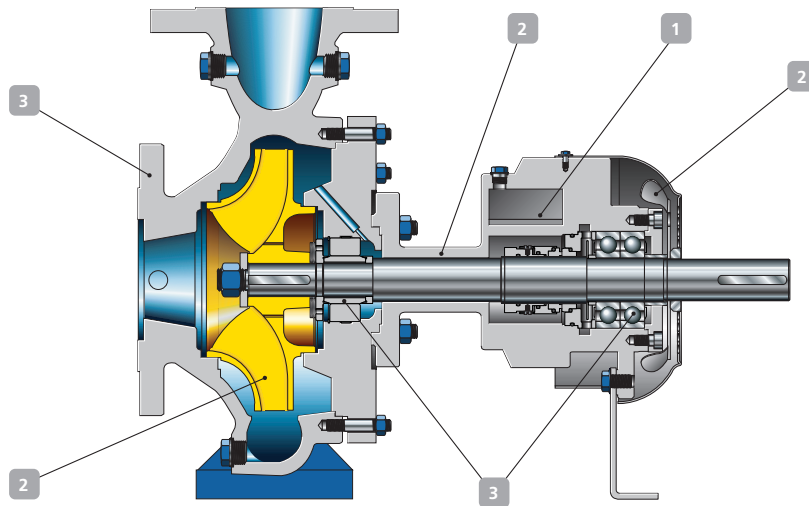
- General industry
- Process engineering
- Heat transfer fluids and hot water systems
- Energy and heat supply

For more information, visit:
ksb.us.com



HPK

HPK/HPK-L – Heat Transfer Fluid/Hot Water Pump in Back Pull-out Design



1 Reliable

Thanks to the patented VenJet® venting chamber, VenJet ensures that gas is kept away from rotating parts during operation, and thus protects the mechanical seal against dry running.

2 Energy-efficient

- Improved flow passage in the hydraulic section provides for high efficiencies.
- As standard, the pump characteristic is adjusted to the required duty point.
- Additional sizes within the ISO selection chart allow for selection with the best efficiency point.
- Air-cooled bearing bracket with heat barrier and fan impeller; no external cooling required.

3 Safe

- Two grease-lubricated angular contact ball bearings in back-to-back arrangement (designed for at least 25,000 h) and a product-lubricated SiC/SiC plain-bearing make for a long operating life.
- Dimensions and ratings to ISO 2858 as well as fulfilling the technical requirements as per ISO 5199 ensure interchangeability and reliability.

Universal use

Depending on the requirements imposed by fluids and pressure, KSB offers several material combinations for casings, impellers, casing wear rings and mechanical seals (single and double). These cover the full range of applications involving all types of organic and synthetic heat transfer fluids as well as hot water.

Material

HPK-L	S	E	Z	Y
Volute casing	GP240GH+N		1.7706	
Casing cover	JS1025	P250GH 1.7335 P355NL ¹⁾	JS1025	P250GH 1.7335 P355NL ¹⁾
Impeller	JL1040/1.4408			
Shaft	1.4021 + QT800			
Bearing bracket	JS1025			

¹⁾ Depending on pump size

Technical data

	HPK	HPK-L	
Pump size	1 to 12	1 to 12	in.
Flow rate up to	21,120	6,160	gpm
Head up to	886	764	ft.
Fluid temperature	up to 752	up to 752	°F
Operating pressure	up to 580	up to 580	psi



PUFFER Rotating Equipment
Pumps & Parts ▪ Pump Skids ▪ Repairs & Services

12305 Kurland Dr, Houston, TX 77034
RotatingEquipment@puffer.com 281-240-2000



Authorized Sales Partner