

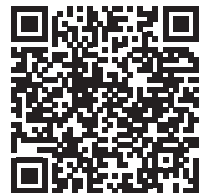
Movitec – High-Pressure In-Line Pump



Applications:

- Industry
- Building services
- Chemical industry
- Heat and steam generation
- Food industry
- Cooling water supply
- Irrigation and spray irrigation
- Water treatment
- Pharmaceutical industry
- Washing plants
- Marine applications
- Fire fighting and sprinkler systems
- Pressure boosting
- HVAC

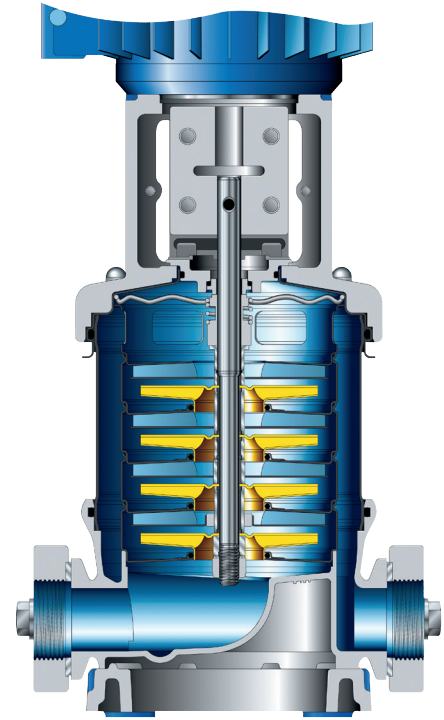
For more information, visit:
ksb.us.com



Learn more about Movitec
Pumps on the KSB website.

Movitec – High-Pressure In-Line Pump

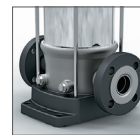
- Energy savings**
 - Advanced hydraulic design engineered to provide superior efficiencies.
- Lowest installed cost**
 - The industry's lowest required NPSH – less than two feet.
- Flexible**
 - Large variety of materials and connections, along with extended temperature and pressure range.
 - Widest range of hydraulic coverage.
- Reliable**
 - Product-lubricated plain bearing of tungsten carbide, cast pump foot, torsion-resistant pump shroud and confined O-rings.
 - Corrosion-resistant hydraulic components made of stainless steel.
- Easy to service**
 - Can be fitted with any standardized mechanical seal. A cartridge seal or KSB Easy Access seal is also available, allowing for simple replacement without requiring total disassembly.



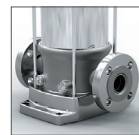
Technical data

Movitec	VC, V, VS, LHS
Max. flow	845 gpm
Max. head	1,316 ft.
Max. pressure	580 psi
Temperature range	-5 to 284° F

	Materials ● Standard (pre-configured model) ○ Optional – Not available	Sizes			
		2 / 4 / 6 / 10 / 15 / 25 / 40 / 60 / 90 / 125	VC	V	VS
Baseplate	Grey Cast Iron ¹⁾	–	●	●	–
	Cast 304 SS	–	○	○	–
Pump casing	Grey Cast Iron ²⁾	●	–	–	–
	Cast 304 SS	–	●	–	–
	Cast 316 SS	–	–	●	●
Hydraulic system	304 SS	●	●	–	–
	316 LSS	–	–	●	–
	Cast 304 SS ³⁾	●	●	–	–
	Cast 316 SS ³⁾	–	–	●	–



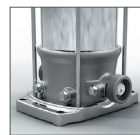
Round flange
Movitec VF



Round flange
Movitec VSF



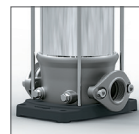
Round flange
Movitec VCF



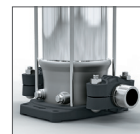
External thread
connector
Movitec VE



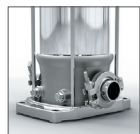
Oval flange
Movitec V



Oval flange
Movitec VS



Victaulic coupling
Movitec V(S)V



Triclamp coupling
Movitec V(S)T

¹⁾ Powder-coated / JS 1030 or JL 1040, depending on strength required

²⁾ With cataphoretic coating

³⁾ Size 90 and 125 only

* IES in accordance with IEC/TS 60034-30-2 up to 15/18.5 kW (only for 1500 rpm types rated 0.55 kW, 0.75 kW, 2.2 kW, 3 kW, 4 kW. IES in preparation)



PUFFER Rotating Equipment
Pumps & Parts ▪ Pump Skids ▪ Repairs & Services

12305 Kurland Dr, Houston, TX 77034
RotatingEquipment@puffer.com 281-240-2000



Authorized Sales Partner