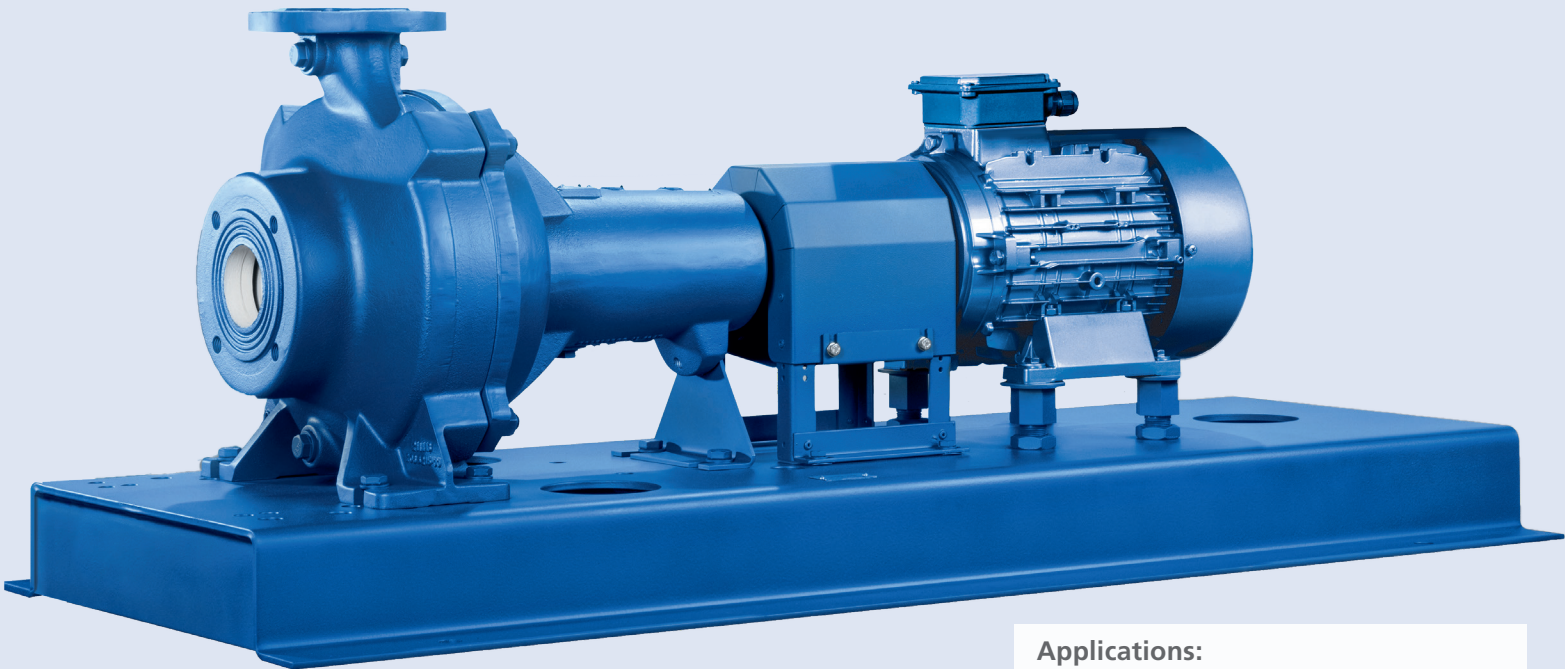


Sewatec/Sewabloc – Wastewater Pump with Enhanced Hydraulic System



Applications:

- Wastewater transport
- Wastewater treatment
- Sludge treatment
- Stormwater transport
- Recirculating aquaculture systems

For more information, visit:
ksb.us.com

Impeller options



Type F-max



Type E-max



Type D



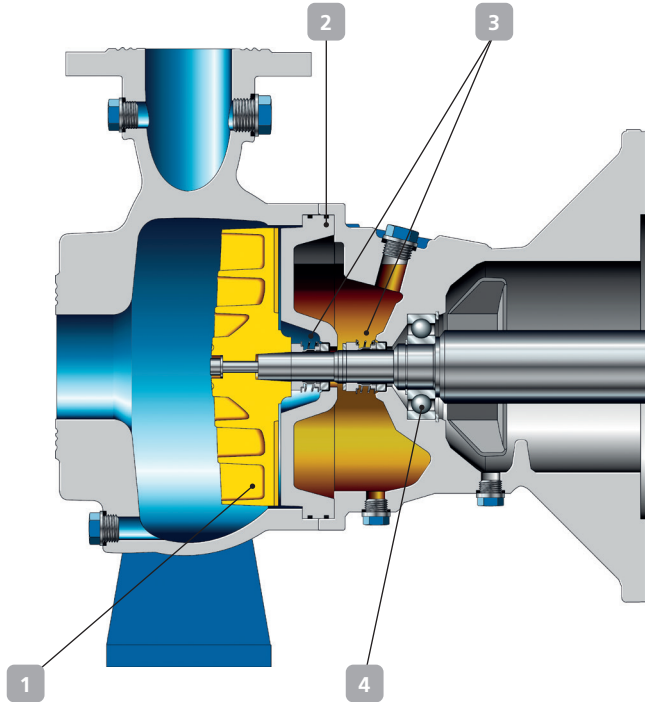
Type D-max



Type K-max

Sewatec/Sewabloc – Wastewater Pump with F-max Enhanced Hydraulic System

- 1 Reliable operation**
Non-clogging impellers with large free passages, optimized for every type of wastewater
- 2 Energy savings**
 - Optimized hydraulic system yields high efficiency
 - In combination with the motor, the operating costs can be markedly reduced
- 3 Dependability**
Two bi-directional mechanical seals with oil reservoir
- 4 Cost efficiency**
 - Maintenance reduced by rolling element bearings up to S04 grease-packed for life and higher than S04 regreasable
 - Optimized spare parts inventories: Standardized components are interchangeable within this type series and with the submersible motor pumps of the Amarex KRT type series



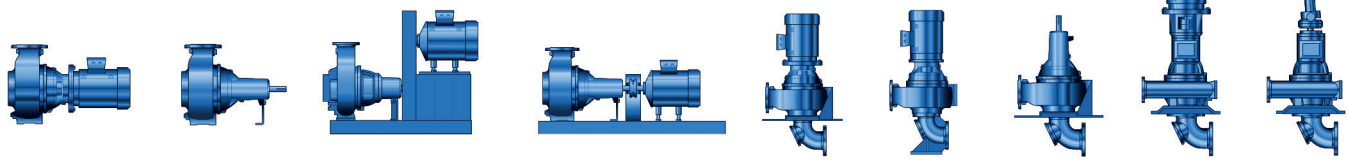
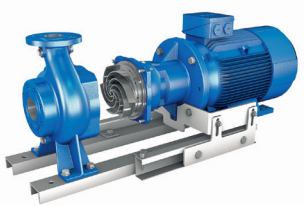
- Flexibility**
 - Various installation types to suit different site conditions
 - Easy to install and remove with maintenance skid for Sewabloc
 - New generation of impellers (D-max, F-max, E-max, K-max) with improved efficiencies and steeper characteristic curves

Technical data

Sizes	Up to 30 in.
Capacity	Up to 44,000 gpm
Head	Up to 377 ft.
Discharge pressure	Up to 145 psi
Temperature	Up to 158 °F

* Explosion-proof to NEC 500, Class 1, Division 1, Groups C and D, T3, hazardous (classified) locations.

Maintenance skid



PUFFER Rotating Equipment
Pumps & Parts • Pump Skids • Repairs & Services

12305 Kurland Dr, Houston, TX 77034
RotatingEquipment@puffer.com 281-240-2000

KSB
Authorized Sales Partner